

As of  
March 2025

# SUSQUEHANNA RIVER RAIL BRIDGE PROJECT



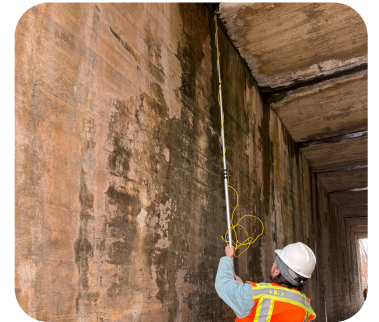
## Project Update



The Amtrak Susquehanna River Bridge Project is a critical infrastructure project that will improve rail connectivity along the Northeast Corridor (NEC) by replacing the existing two-track bridge over the Susquehanna River between the City of Havre de Grace in Harford County, Maryland, and the Town of Perryville in Cecil County, Maryland. The new structures will include two new, fixed parallel bridges with greater vertical and horizontal clearances for marine traffic. Amtrak is beginning preparatory work for the project. This project update describes recent progress and upcoming activities residents and business owners may see in the coming months. The activity descriptions and general locations below are dynamic and subject to change.

### Recent Progress

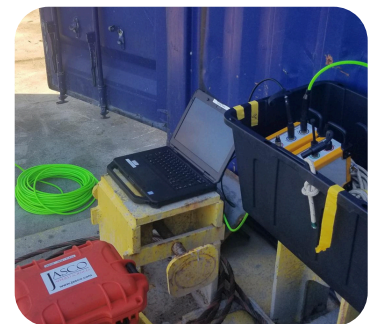
- Crews completed hibernacula bat surveys to identify locations within the project area where Northern Long-Eared Bats and the Tri-Colored Bats could be hibernating during the winter.
- No bats were observed in any of the surveyed bridges, culverts, or other structures identified as potential hibernation locations.



*Hibernacula survey*

### Environmental Surveys

- Crews will continue to conduct surveys to gather information about natural and archaeological resources and ambient noise and vibration in the first and second quarter of 2025.
- Surveys will be conducted during daytime weekday hours.
- Work will involve excavation, measurements, photographs, drones, etc.



*Noise and vibration  
monitoring equipment*

# SUSQUEHANNA RIVER RAIL BRIDGE PROJECT



## Environmental and Geotechnical Testing

- Crews will be in various locations throughout the project site during the first and second quarters of 2025 performing environmental and geotechnical borings to provide the design and construction teams with a better understanding of subsurface conditions.
- These activities are expected to occur during daytime and weekday hours.
- Boring rigs, vacuum excavators and hand augers will be used to collect soil and in-river samples.
- Disturbed areas will be restored upon completion.



Soil borings

## Subsurface Utility Investigations

- Crews will identify subsurface utilities throughout the project site using ground penetrating radar, hand augers, and vacuum excavators.
- This activity is anticipated to begin in the middle of March 2025 and continue throughout 2025 and into 2026.
- Underwater utility identification is expected to take place on the west side (upstream) of the existing bridge. Divers will be used to gather underwater information.
- The information will be used to identify utilities that may conflict with upcoming bridge construction so that any necessary relocations can occur in advance of construction.
- Activities will typically occur during daytime weekday hours.
- There will be roadway impacts at some locations. Crews will coordinate lane closures with the appropriate authorities prior to starting work.
- Disturbed areas will be restored upon completion.



Identification of  
subsurface utilities

## Ongoing Railroad Maintenance

- In addition to the project-specific activities, Amtrak will continue performing regular inspections and maintenance along the existing bridge and adjacent segments of the Northeast Corridor.



Maintenance on the  
Northeast Corridor  
Credit: Amtrak

## Project Timeline



As of  
March 2025

# SUSQUEHANNA RIVER RAIL BRIDGE PROJECT



## Approximate Locations of On-Going and Upcoming Activities



### For More Information:

[AmtrakNewEra.com/SRB](https://AmtrakNewEra.com/SRB)

[SRBProject@amtrak.com](mailto:SRBProject@amtrak.com)

Amtrak – Attn Susquehanna River Rail Bridge Project  
Box 65 – 2955 Market Street, Philadelphia, PA 19104

844-SUS-RAIL  
844-787-7245

Scan to sign up for  
our newsletter

