

TO NEW HAVEN

TO BOSTON



LEGEND:

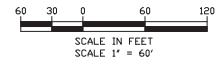
- FEMA 100 — FEMA 100 — FEMA 100 YEAR FLOOD LINE — ELEVATION VARIES
- LCSTV — LCSTV — LAND CAPABLE OF SUPPORTING TIDAL VEGETATION (LCSTV) — ELEVATION 4.1'
- C.J.L. — C.J.L. — COASTAL JURISDICTION LINE (C.J.L.) — ELEVATION 2.9'
- HTL — HTL — HIGH TIDE LINE (HTL) — ELEVATION 3.04'
- MHW — MHW — MEAN HIGH WATER (MHW) — ELEVATION 1.60'
- MLW — MLW — MEAN LOW WATER (MLW) — ELEVATION -1.71'
- FIELD LOCATED WETLAND BOUNDARY
- LOD — LOD — LIMITS OF PROJECT DISTURBANCE
- AMTRAK RIGHT OF WAY (ROW)
- PERMANENT IMPACT BELOW HIGH TIDE LINE
- TEMPORARY IMPACT BELOW HIGH TIDE LINE

NOTES:

1. TEMPORARY AND PERMANENT ENCROACHMENT INTO REGULATED WETLANDS SHALL BE IN CONFORMANCE WITH WETLANDS PERMITS ISSUED FOR THE PROJECT. LIMITS OF TEMPORARY ENCROACHMENT SHALL BE DELINEATED WITH STAKES AND FLAGGING.

ANY STAGING AREAS AND PATHS TO BE RETURNED TO EXISTING CONDITION AT COMPLETION OF USE

MATCHLINE DWG HTL-02



FILE NAME: 21000-01-WFMT ACTIVITY 7_HTL.DWG
DATE PLOTTED: 05/22/2023 08:57 AM
PLOT SCALE: 1" = 60'
DRAWING PLOT TIME: 1:15

No.	Revisions	Date	By

Amtrak[®]

This material is owned by and is the sole and exclusive property of the National Railroad Passenger Corporation (Norfolk), Office of Engineering, and is loaned on a non-transferable basis solely for use in connection with the design and construction of Amtrak facilities and equipment. The reproduction, storage, sale or other disposition of this document without the express written consent of the National Railroad Passenger Corporation, Office of Engineering is prohibited.

Office of Chief Engineer
STRUCTURES

National Railroad Passenger Corporation
30th Street Station, Philadelphia, Pennsylvania 19104

Approved	Date



ENVIRONMENTAL PERMIT PLANS
PLAN DATE: MAY 2, 2023

HARDESTY & HANOVER, LLC
ENGINEERING
1501 Broadway New York, NY 10036
1700 Market St. Suite 1050
Philadelphia, PA 19103

OLD SAYBROOK, CONNECTICUT

**REPLACEMENT OF MB 106.89
OVER CONNECTICUT RIVER**

HIGH TIDE LINE IMPACT PLAN

Designed: CS Drawn: CB/MD Checked: KM Date: 5/22/2023












Project Code	XXXX-XXX
WBS:	
Sheet No.	54 OF 140
Dwg. #	HTL-01

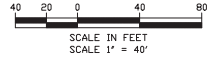
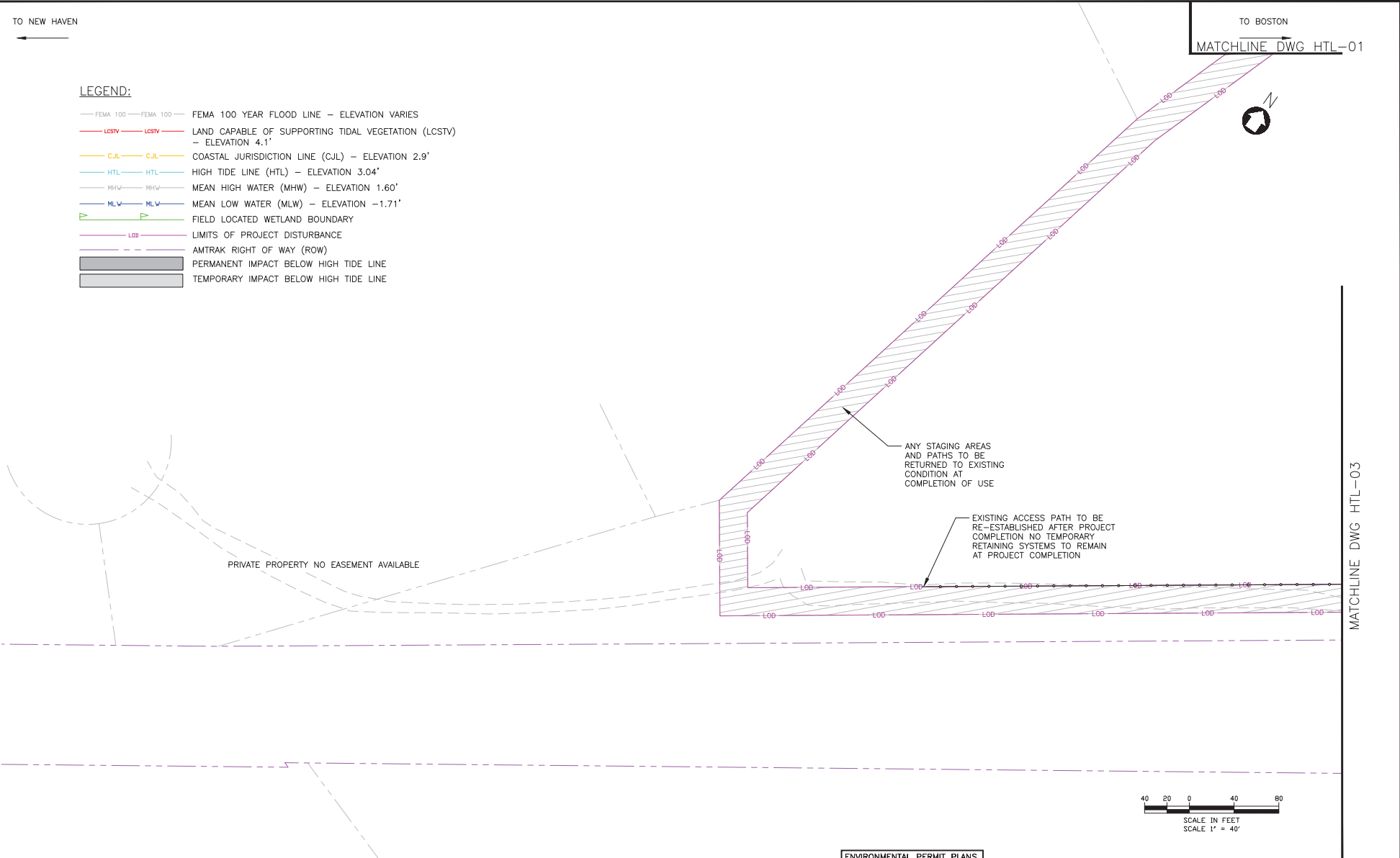
TO NEW HAVEN

TO BOSTON

MATCHLINE DWG HTL-01

LEGEND:

-  FEMA 100 — FEMA 100 — ELEVATION VARIES
-  LCSTV — LCSTV — LAND CAPABLE OF SUPPORTING TIDAL VEGETATION (LCSTV) — ELEVATION 4.1'
-  CJL — CJL — COASTAL JURISDICTION LINE (CJL) — ELEVATION 2.9'
-  HTL — HTL — HIGH TIDE LINE (HTL) — ELEVATION 3.04'
-  MHW — MHW — MEAN HIGH WATER (MHW) — ELEVATION 1.60'
-  MLW — MLW — MEAN LOW WATER (MLW) — ELEVATION -1.71'
-  — FIELD LOCATED WETLAND BOUNDARY
-  — LIMITS OF PROJECT DISTURBANCE
-  — AMTRAK RIGHT OF WAY (ROW)
-  — PERMANENT IMPACT BELOW HIGH TIDE LINE
-  — TEMPORARY IMPACT BELOW HIGH TIDE LINE



FILE NAME: J:\0000\HWACTIVITY 7 HTL.DWG
PLOT DATE: 5/22/2023 10:58 AM
DRAWING PLOT TIME: 1:15

No.	Revisions	Date	By



This material is owned by and is the sole and exclusive property of the National Railroad Passenger Corporation (Norfolk), Office of Engineering, and is supplied on a non-transferable basis solely for use in connection with the design and construction of Amtrak facilities and equipment. The reproduction, storage, sale or other disposition of this document without the express written consent of the National Railroad Passenger Corporation, Office of Engineering is prohibited.

Office of Chief Engineer
STRUCTURES
National Railroad Passenger Corporation
30th Street Station, Philadelphia, Pennsylvania 19104

Approved	Date

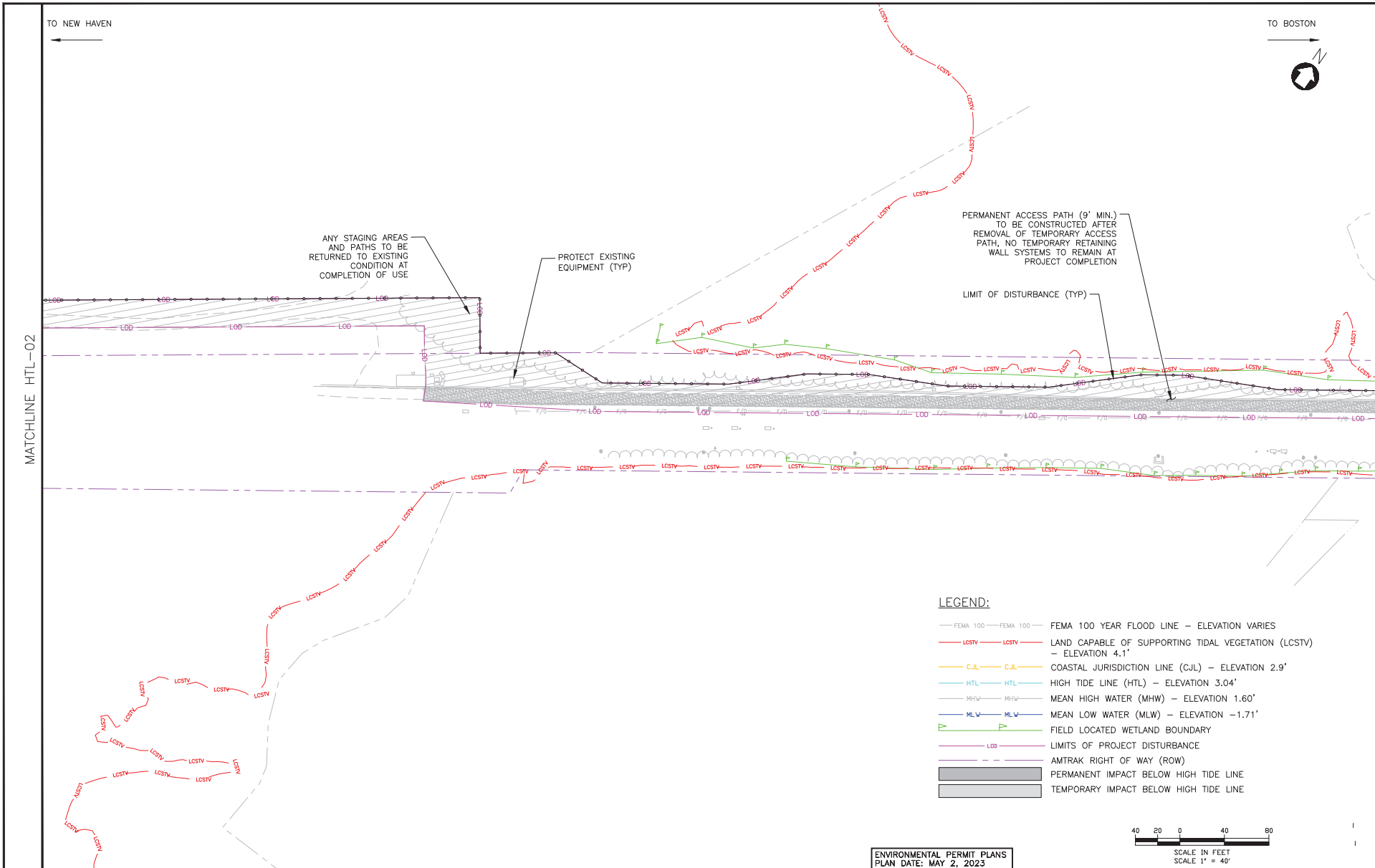


ENVIRONMENTAL PERMIT PLANS
PLAN DATE: MAY 2, 2023

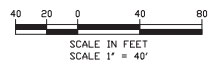
HARDESTY & HANOVER, LLC
ENGINEERING
1501 Broadway New York, NY 10036
1700 Market St. Suite 1050
Philadelphia, PA 19103

OLD SAYBROOK CONNECTICUT
**REPLACEMENT OF MB 106.89
OVER CONNECTICUT RIVER**
HIGH TIDE LINE IMPACT PLAN
Designed: CB Drawn: CB/MD Checked: KM Date: 5/22/2023

Project Code	XXXX-XXX
WBS:	
Sheet No.	55 OF 140
Dwg. #	HTL-02



- LEGEND:**
- FEMA 100 — FEMA 100 — FEMA 100 YEAR FLOOD LINE — ELEVATION VARIES
 - LCSTV — LCSTV — LAND CAPABLE OF SUPPORTING TIDAL VEGETATION (LCSTV) — ELEVATION 4.1'
 - C.J.L. — C.J.L. — COASTAL JURISDICTION LINE (C.J.L.) — ELEVATION 2.9'
 - HTL — HTL — HIGH TIDE LINE (HTL) — ELEVATION 3.04'
 - M.H.W. — M.H.W. — MEAN HIGH WATER (MHW) — ELEVATION 1.60'
 - M.L.W. — M.L.W. — MEAN LOW WATER (MLW) — ELEVATION -1.71'
 - — — FIELD LOCATED WETLAND BOUNDARY
 - — — LIMITS OF PROJECT DISTURBANCE
 - — — AMTRAK RIGHT OF WAY (ROW)
 - ▨ — — — PERMANENT IMPACT BELOW HIGH TIDE LINE
 - ▨ — — — TEMPORARY IMPACT BELOW HIGH TIDE LINE



FILE NAME: 21000-IMPACT_ACTIVITY_T_HTL.DWG
 PLOT DATE: 5/22/2023 10:58 AM
 PLOT SCALE: 1"=40'
 DRAWING PLOT NAME: HTL

No.	Revisions	Date	By

This material is owned by and is the sole and exclusive property of the National Railroad Passenger Corporation (Norfolk), Office of Engineering, and is loaned on a non-exclusive basis solely for use in connection with the design and construction of Amtrak facilities and equipment. The reproduction, storage, sale or other disposition of this document without the express written consent of the National Railroad Passenger Corporation, Office of Engineering is prohibited.

Office of Chief Engineer
STRUCTURES
 National Railroad Passenger Corporation
 30th Street Station, Philadelphia, Pennsylvania 19104

Approved	Date

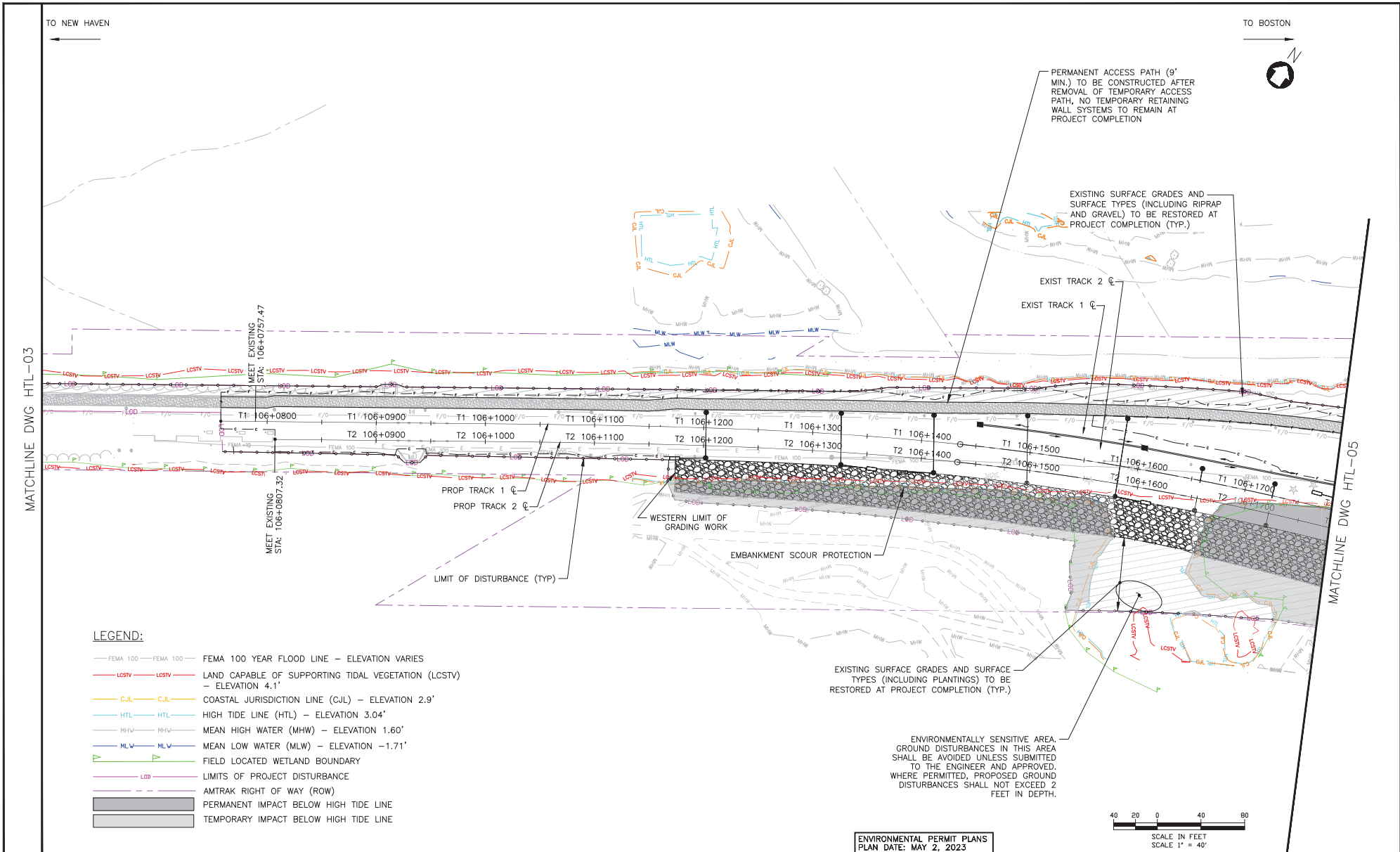


ENVIRONMENTAL PERMIT PLANS
 PLAN DATE: MAY 2, 2023

HARDESTY & HANOVER, LLC
 ENGINEERING
 1501 Broadway New York, NY 10036
 1700 Market St. Suite 1050
 Philadelphia, PA 19103

OLD SAYBROOK CONNECTICUT
REPLACEMENT OF MB 106.89
OVER CONNECTICUT RIVER
HIGH TIDE LINE IMPACT PLAN
 Designed CB Drawn CB/MD Checked KM Date 5/22/2023

Project Code	XXXX-XXX
WBS:	
Sheet No.	56 OF 140
Dwg. No.	HTL-03



TO NEW HAVEN

TO BOSTON



PERMANENT ACCESS PATH (9' MIN.) TO BE CONSTRUCTED AFTER REMOVAL OF TEMPORARY ACCESS PATH. NO TEMPORARY RETAINING WALL SYSTEMS TO REMAIN AT PROJECT COMPLETION

EXISTING SURFACE GRADES AND SURFACE TYPES (INCLUDING RIPRAP AND GRAVEL) TO BE RESTORED AT PROJECT COMPLETION (TYP.)

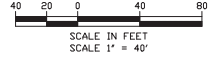
EXIST TRACK 2
EXIST TRACK 1

LIMIT OF DISTURBANCE (TYP)

WESTERN LIMIT OF GRADING WORK
EMBANKMENT SCOUR PROTECTION

EXISTING SURFACE GRADES AND SURFACE TYPES (INCLUDING PLANTINGS) TO BE RESTORED AT PROJECT COMPLETION (TYP.)

ENVIRONMENTALLY SENSITIVE AREA. GROUND DISTURBANCES IN THIS AREA SHALL BE AVOIDED UNLESS SUBMITTED TO THE ENGINEER AND APPROVED. WHERE PERMITTED, PROPOSED GROUND DISTURBANCES SHALL NOT EXCEED 2 FEET IN DEPTH.



LEGEND:

- FEMA 100 — FEMA 100 — FEMA 100 YEAR FLOOD LINE — ELEVATION VARIES
- LCSTV — LCSTV — LAND CAPABLE OF SUPPORTING TIDAL VEGETATION (LCSTV) — ELEVATION 4.1'
- C.J.L. — C.J.L. — COASTAL JURISDICTION LINE (C.J.L.) — ELEVATION 2.9'
- HTL — HTL — HIGH TIDE LINE (HTL) — ELEVATION 3.04'
- MHW — MHW — MEAN HIGH WATER (MHW) — ELEVATION 1.60'
- MLW — MLW — MEAN LOW WATER (MLW) — ELEVATION -1.71'
- — — FIELD LOCATED WETLAND BOUNDARY
- — — LIMITS OF PROJECT DISTURBANCE
- — — AMTRAK RIGHT OF WAY (ROW)
- — — PERMANENT IMPACT BELOW HIGH TIDE LINE
- — — TEMPORARY IMPACT BELOW HIGH TIDE LINE

FILE NAME: 21000-IMPACT_ACTIVITY_7_HTL.DWG
PLOT DATE: 05/22/2023 09:58 AM
DRAWING PLOT TIME: 1:05

No.	Revisions	Date	By

This material is owned by and is the sole and exclusive property of the National Railroad Passenger Corporation (Norfolk), Office of Engineering, and is loaned to a consultant basis solely for use in connection with the design and construction of Amtrak facilities and equipment. The reproduction, storage, sale or other disposition of this document without the express written consent of the National Railroad Passenger Corporation, Office of Engineering is prohibited.

Office of Chief Engineer
STRUCTURES
National Railroad Passenger Corporation
30th Street Station, Philadelphia, Pennsylvania 19104

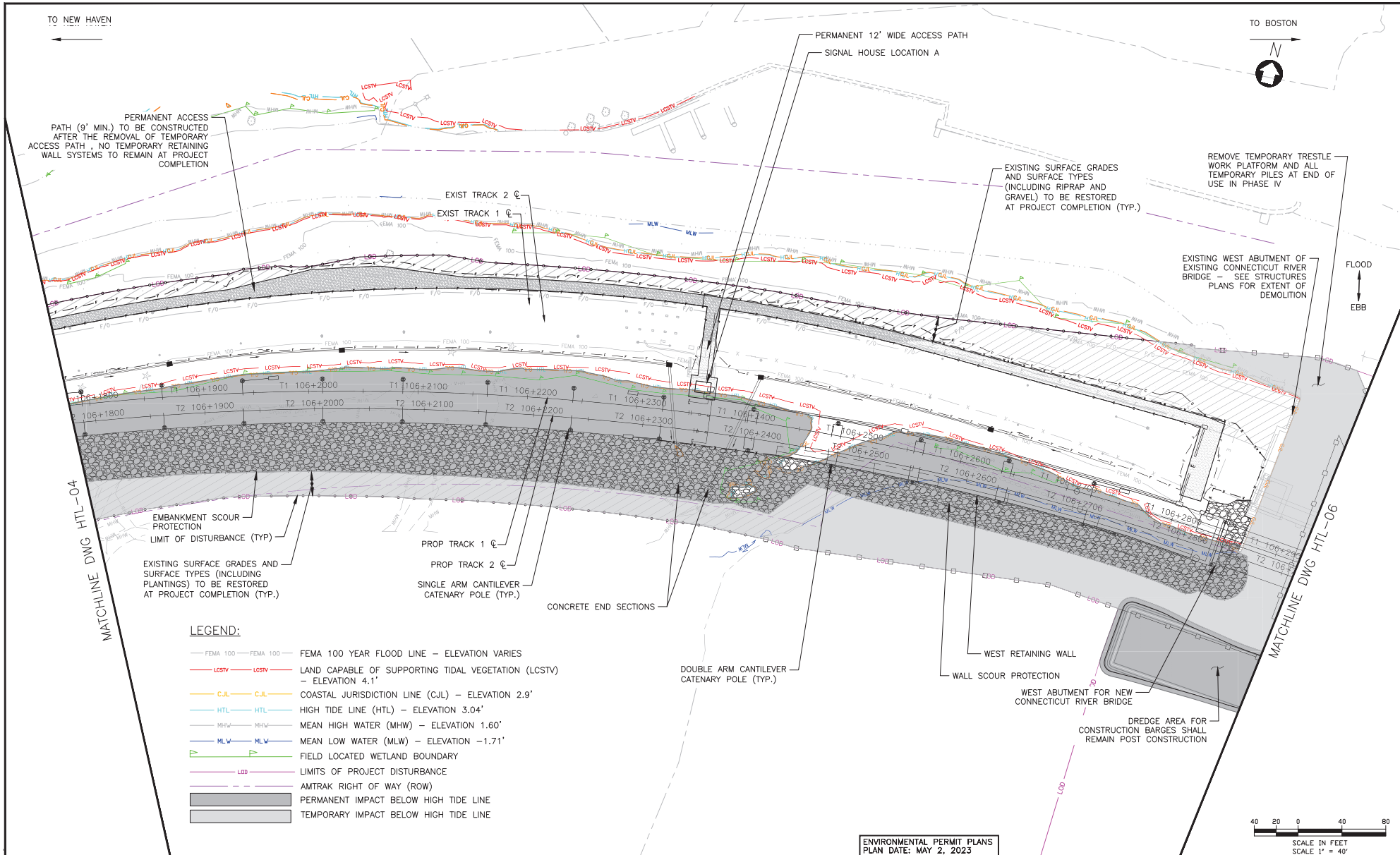
Approved	Date



ENVIRONMENTAL PERMIT PLANS
PLAN DATE: MAY 2, 2023

HARDESTY & HANOVER, LLC
ENGINEERING
1501 Broadway New York, NY 10036
1700 Market St. Suite 1050
Philadelphia, PA 19103

OLD SAYBROOK	CONNECTICUT	Project Code	XXXX-XXXX
REPLACEMENT OF MB 106.89 OVER CONNECTICUT RIVER		WBS:	
		Sheet No.	57 OF 140
HIGH TIDE LINE IMPACT PLAN		Dwg. No.	HTL-04
Designed	CB	Drawn	CB/MD
Checked	KM	Date	5/22/2023



TO NEW HAVEN

TO BOSTON



PERMANENT ACCESS PATH (9' MIN.) TO BE CONSTRUCTED AFTER THE REMOVAL OF TEMPORARY ACCESS PATH - NO TEMPORARY RETAINING WALL SYSTEMS TO REMAIN AT PROJECT COMPLETION

PERMANENT 12' WIDE ACCESS PATH
SIGNAL HOUSE LOCATION A

EXISTING SURFACE GRADES AND SURFACE TYPES (INCLUDING RIPRAP AND GRAVEL) TO BE RESTORED AT PROJECT COMPLETION (TYP.)

REMOVE TEMPORARY TRESTLE WORK PLATFORM AND ALL TEMPORARY PILES AT END OF USE IN PHASE IV

EXISTING WEST ABUTMENT OF EXISTING CONNECTICUT RIVER BRIDGE - SEE STRUCTURES PLANS FOR EXTENT OF DEMOLITION

FLOOD
EBB

EXIST TRACK 2 ☐
EXIST TRACK 1 ☐

EMBANKMENT SCOUR PROTECTION
LIMIT OF DISTURBANCE (TYP.)

PROP TRACK 1 ☐
PROP TRACK 2 ☐
SINGLE ARM CANTILEVER CATERNARY POLE (TYP.)

CONCRETE END SECTIONS

DOUBLE ARM CANTILEVER CATERNARY POLE (TYP.)

WEST RETAINING WALL

WALL SCOUR PROTECTION

WEST ABUTMENT FOR NEW CONNECTICUT RIVER BRIDGE

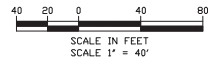
DREDGE AREA FOR CONSTRUCTION BARGES SHALL REMAIN POST CONSTRUCTION

LEGEND:

- FEMA 100 — FEMA 100 — FEMA 100 YEAR FLOOD LINE — ELEVATION VARIES
- LCSTV — LCSTV — LAND CAPABLE OF SUPPORTING TIDAL VEGETATION (LCSTV) — ELEVATION 4.1'
- C.J.L. — C.J.L. — COASTAL JURISDICTION LINE (C.J.L.) — ELEVATION 2.9'
- HTL — HTL — HIGH TIDE LINE (HTL) — ELEVATION 3.04'
- M.H.W. — M.H.W. — MEAN HIGH WATER (MHW) — ELEVATION 1.60'
- M.L.W. — M.L.W. — MEAN LOW WATER (MLW) — ELEVATION -1.71'
- — — FIELD LOCATED WETLAND BOUNDARY
- — — LIMITS OF PROJECT DISTURBANCE
- — — AMTRAK RIGHT OF WAY (ROW)
- — — PERMANENT IMPACT BELOW HIGH TIDE LINE
- — — TEMPORARY IMPACT BELOW HIGH TIDE LINE

MATCHLINE DWG HTL-04

MATCHLINE DWG HTL-06



FILE NAME: J:\2020\HWACTIVITY 7_HTL.DWG
PLOT DATE: 05/22/2023 08:58 AM
DRAWING PLOT TIME: 1:05

No.	Revisions	Date	By

This material is owned by and is the sole and exclusive property of the National Railroad Passenger Corporation (d/b/a Amtrak), and is loaned to the contractor on a non-exclusive basis solely for use in connection with the design and construction of Amtrak facilities and equipment. The reproduction, storage, sale or other disposition of this document without the express written consent of the National Railroad Passenger Corporation, Office of Engineering is prohibited.

Office of Chief Engineer
STRUCTURES
National Railroad Passenger Corporation
30th Street Station, Philadelphia, Pennsylvania 19104

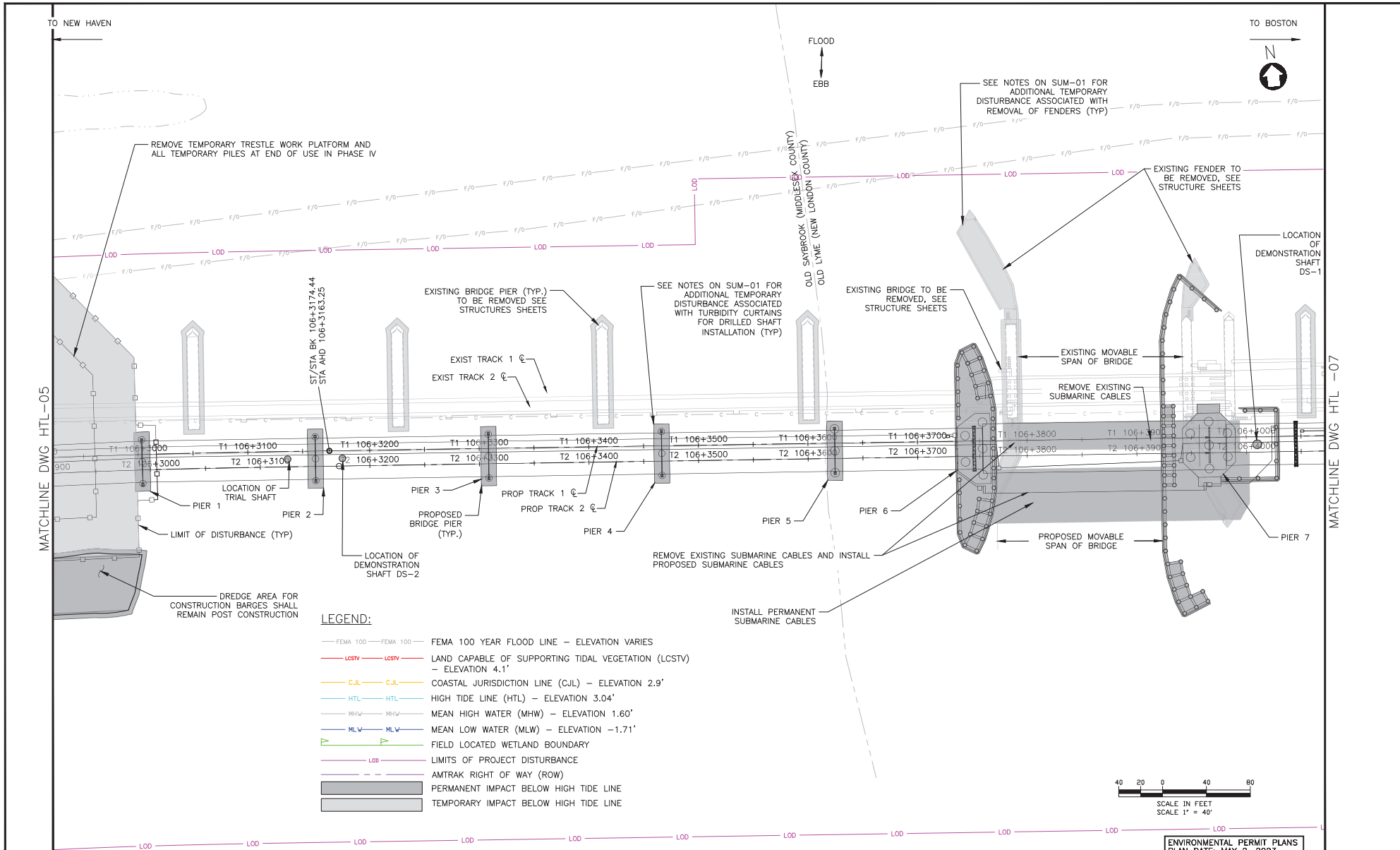
Approved	Date



ENVIRONMENTAL PERMIT PLANS
PLAN DATE: MAY 2, 2023

HARDESTY & HANOVER, LLC
ENGINEERING
1501 Broadway New York, NY 10036
1700 Market St. Suite 1050
Philadelphia, PA 19103

CONNECTICUT			
Project Code	XXX-XXX	WBS:	
Sheet No.	58 OF 140	Dwg #:	HTL-05
REPLACEMENT OF MB 106.89 OVER CONNECTICUT RIVER			
HIGH TIDE LINE IMPACT PLAN			
Designed	CB	Drawn	CB/MD
Checked	KM	Date	5/22/2023



- LEGEND:**
- FEMA 100 — FEMA 100 — FEMA 100 YEAR FLOOD LINE - ELEVATION VARIES
 - LCSTV — LCSTV — LAND CAPABLE OF SUPPORTING TIDAL VEGETATION (LCSTV) - ELEVATION 4.1'
 - C.J.L. — C.J.L. — COASTAL JURISDICTION LINE (C.J.L.) - ELEVATION 2.9'
 - HTL — HTL — HIGH TIDE LINE (HTL) - ELEVATION 3.04'
 - MHW — MHW — MEAN HIGH WATER (MHW) - ELEVATION 1.60'
 - MLW — MLW — MEAN LOW WATER (MLW) - ELEVATION -1.71'
 - — — FIELD LOCATED WETLAND BOUNDARY
 - — — LIMITS OF PROJECT DISTURBANCE
 - — — AMTRAK RIGHT OF WAY (ROW)
 - — — PERMANENT IMPACT BELOW HIGH TIDE LINE
 - — — TEMPORARY IMPACT BELOW HIGH TIDE LINE

FILE NAME: 21000-IMPACT_ACTIVITY_T_HTL.DWG
 PLOT DATE: 05/22/2023 03:58 AM
 PLOT SCALE: 1/4" = 40'
 DRAWING PLOT TIME: 1:15

No.	Revisions	Date	By

Amtrak[®]

This material is owned by and is the sole and exclusive property of the National Railroad Passenger Corporation (d/b/a Amtrak), Office of Engineering, and is loaned to a consultant basis solely for use in connection with the design and construction of Amtrak facilities and equipment. The reproduction, storage, sale or other disposition of this document without the express written consent of the National Railroad Passenger Corporation, Office of Engineering is prohibited.

Office of Chief Engineer
STRUCTURES
 National Railroad Passenger Corporation
 30th Street Station, Philadelphia, Pennsylvania 19104

Approved	Date

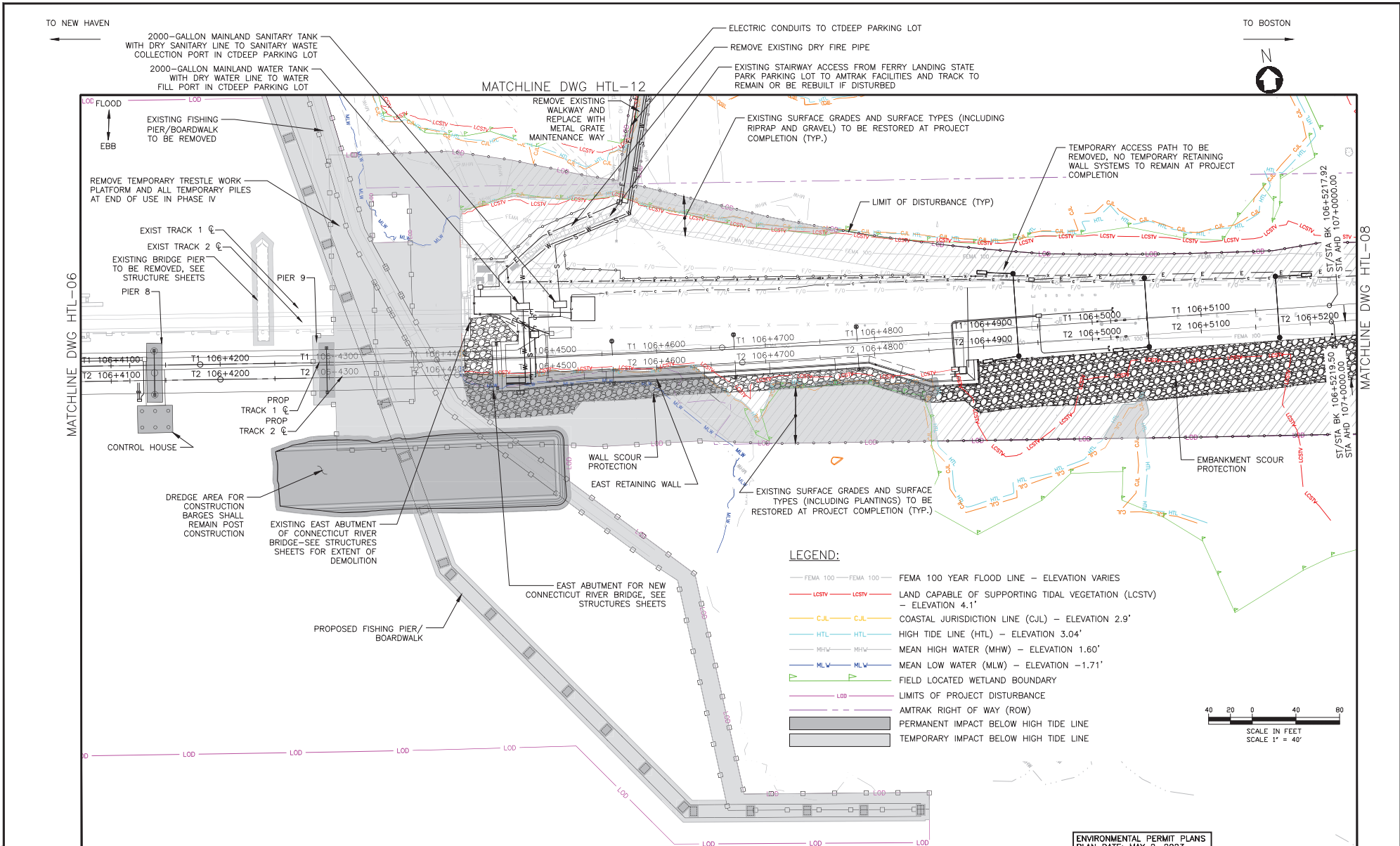


HARDESTY & HANOVER, LLC
 ENGINEERING
 1501 Broadway New York, NY 10036
 1700 Market St. Suite 1050
 Philadelphia, PA 19103

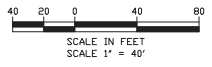
CONNECTICUT
**REPLACEMENT OF MB 106.89
 OVER CONNECTICUT RIVER
 HIGH TIDE LINE IMPACT PLAN**
 ENVIRONMENTAL PERMIT PLANS
 PLAN DATE: MAY 2, 2023

Project Code	XXX-XXX
WBS:	
Sheet No.	59 OF 140
Dwg. No.	HTL-06

Designed CB Drawn CB/MD Checked KM Date 5/22/2023



- LEGEND:**
- FEMA 100 — FEMA 100 — FEMA 100 YEAR FLOOD LINE — ELEVATION VARIES
 - LCSTV — LCSTV — LAND CAPABLE OF SUPPORTING TIDAL VEGETATION (LCSTV) — ELEVATION 4.1'
 - C.J.L — C.J.L — COASTAL JURISDICTION LINE (CJL) — ELEVATION 2.9'
 - HTL — HTL — HIGH TIDE LINE (HTL) — ELEVATION 3.04'
 - MHW — MHW — MEAN HIGH WATER (MHW) — ELEVATION 1.60'
 - MLW — MLW — MEAN LOW WATER (MLW) — ELEVATION -1.71'
 - — — FIELD LOCATED WETLAND BOUNDARY
 - — — LIMITS OF PROJECT DISTURBANCE
 - — — AMTRAK RIGHT OF WAY (ROW)
 - — — PERMANENT IMPACT BELOW HIGH TIDE LINE
 - — — TEMPORARY IMPACT BELOW HIGH TIDE LINE



FILE NAME: J:\2020\HWY\ACTIVITY 7_HTL.DWG
 PLOT DATE: 05/22/2023 08:38 AM
 DRAWING PLOT TIME: 1:15

No.	Revisions	Date	By



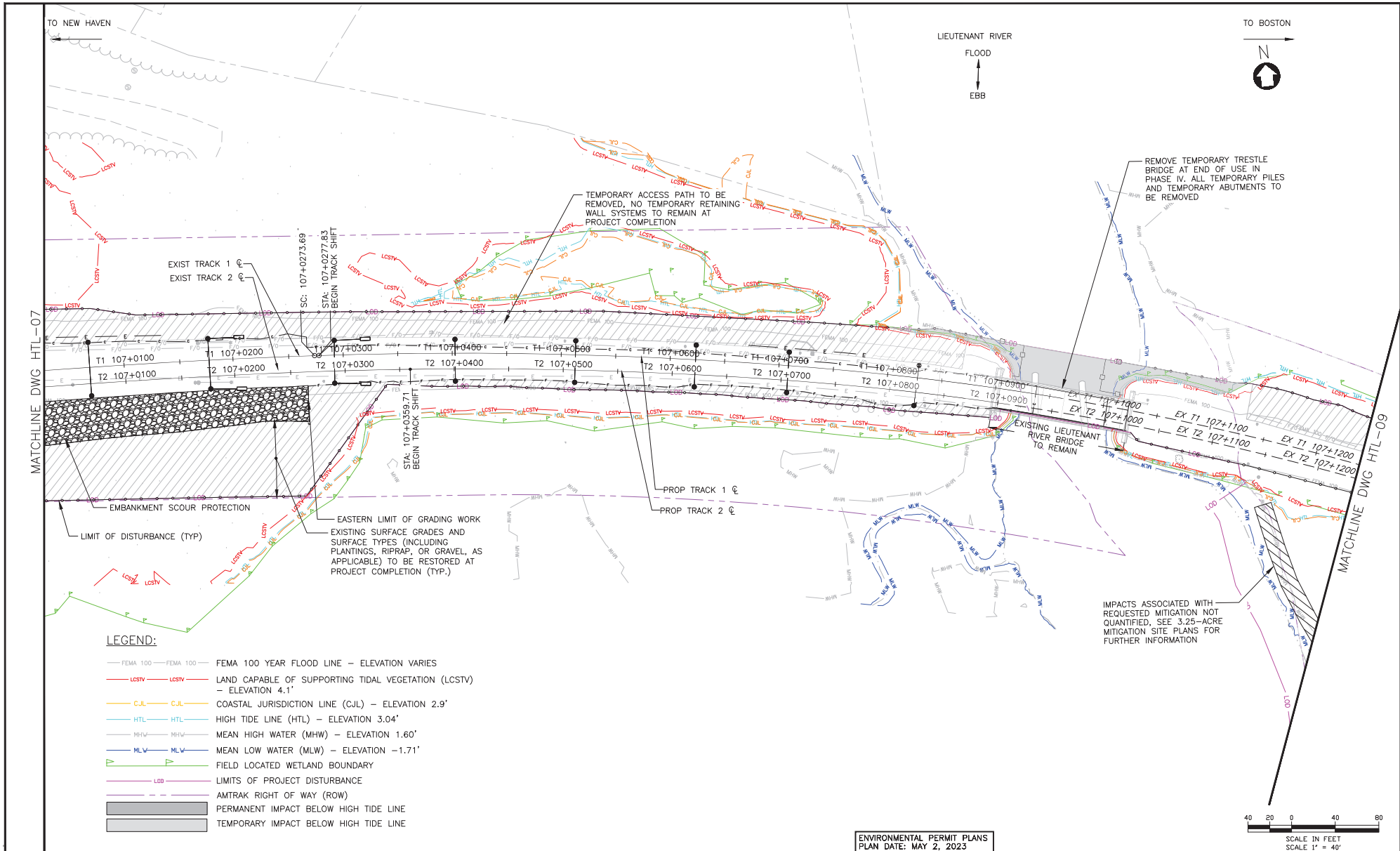
**Office of Chief Engineer
STRUCTURES**
 National Railroad Passenger Corporation
 308 Street Station, Philadelphia, Pennsylvania 19104

Approved	Date



HARDESTY & HANOVER, LLC
 ENGINEERING
 1501 Broadway New York, NY 10036
 1700 Market St. Suite 1050
 Philadelphia, PA 19103

ENVIRONMENTAL PERMIT PLANS PLAN DATE: MAY 2, 2023		OLD SAYBROOK REPLACEMENT OF MB 106.89 OVER CONNECTICUT RIVER HIGH TIDE LINE IMPACT PLAN	CONNECTICUT Project Code: XXXX-XXX WBS: 60 OF 140 Sheet No.: 60 OF 140 Date: 5/22/2023
Designed: CB Drawn: CB/MD Checked: KM	Date: 5/22/2023	Drawn: HTL-07	Project Code: XXXX-XXX WBS: 60 OF 140 Sheet No.: 60 OF 140 Date: 5/22/2023



LEGEND:

- FEMA 100 — FEMA 100 — FEMA 100 YEAR FLOOD LINE — ELEVATION VARIES
- LCSTV — LCSTV — LAND CAPABLE OF SUPPORTING TIDAL VEGETATION (LCSTV) — ELEVATION 4.1'
- CJL — CJL — COASTAL JURISDICTION LINE (CJL) — ELEVATION 2.9'
- HTL — HTL — HIGH TIDE LINE (HTL) — ELEVATION 3.04'
- MHW — MHW — MEAN HIGH WATER (MHW) — ELEVATION 1.60'
- MLW — MLW — MEAN LOW WATER (MLW) — ELEVATION -1.71'
- LDB — LDB — FIELD LOCATED WETLAND BOUNDARY
- — — LIMITS OF PROJECT DISTURBANCE
- — — AMTRAK RIGHT OF WAY (ROW)
- — — PERMANENT IMPACT BELOW HIGH TIDE LINE
- — — TEMPORARY IMPACT BELOW HIGH TIDE LINE

No.	Revisions	Date	By

Amtrak[®]

This material is owned by and to the sole and exclusive property of the National Railroad Passenger Corporation (Amtrak), Office of Engineering, and is loaned on a confidential basis solely for use in connection with the design and construction of Amtrak facilities and equipment. The reproduction, storage, sale or other disposition of this document without the express written consent of the National Railroad Passenger Corporation, Office of Engineering, is prohibited.

Office of Chief Engineer
STRUCTURES

National Railroad Passenger Corporation
30th Street Station, Philadelphia, Pennsylvania 19104

Approved	Date



ENVIRONMENTAL PERMIT PLANS
PLAN DATE: MAY 2, 2023

HARDESTY & HANOVER, LLC
ENGINEERING
1501 Broadway New York, NY 10036
1700 Market St. Suite 1050
Philadelphia, PA 19103

OLD SAYBROOK CONNECTICUT

REPLACEMENT OF MB 106.89 OVER CONNECTICUT RIVER

HIGH TIDE LINE IMPACT PLAN

Designed CB Drawn CB/MD Checked KM Date 5/22/2023

Project Code XXX-XXX
WBS: 61 OF 140
Sheet No. 61 OF 140
Dwg No. HTL-08

FILE NAME: 21000-01-WFCT-ACTIVITY 7_HTL.DWG
 PLOT DATE: 05/22/2023 09:59 AM
 PLOT SCALE: 1" = 40'
 DRAWING PLOT TIME: 1:05

TO NEW HAVEN

TO BOSTON

MATCHLINE DWG HTL-11

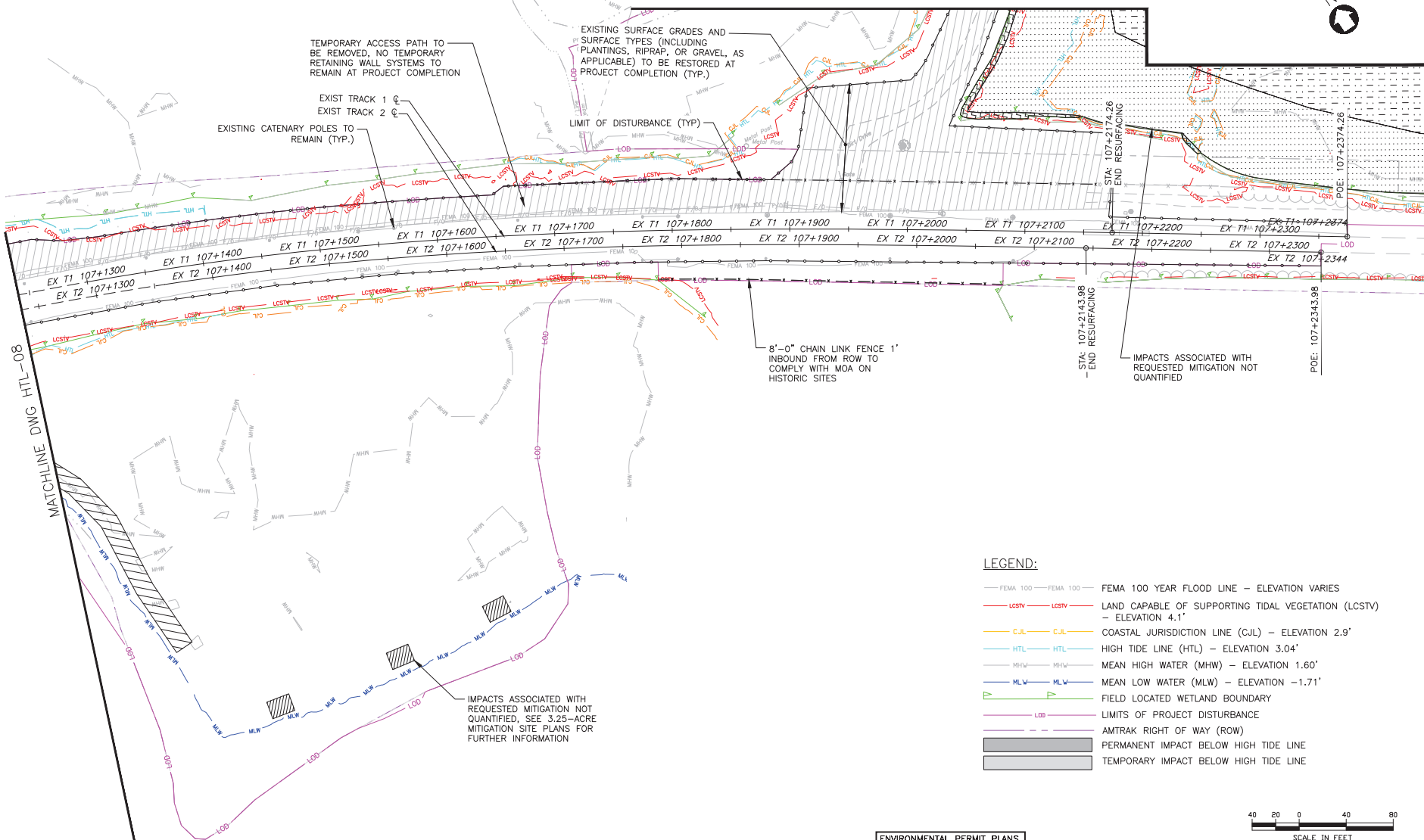


TEMPORARY ACCESS PATH TO BE REMOVED, NO TEMPORARY RETAINING WALL SYSTEMS TO REMAIN AT PROJECT COMPLETION

EXIST TRACK 1
EXIST TRACK 2
EXISTING CANTENARY POLES TO REMAIN (TYP.)

EXISTING SURFACE GRADES AND SURFACE TYPES (INCLUDING PLANTINGS, RIPRAP, OR GRAVEL, AS APPLICABLE) TO BE RESTORED AT PROJECT COMPLETION (TYP.)

LIMIT OF DISTURBANCE (TYP)



8'-0" CHAIN LINK FENCE 1' INBOUND FROM ROW TO COMPLY WITH MOA ON HISTORIC SITES

STA: 107+2143.98
- END RESURFACING

IMPACTS ASSOCIATED WITH REQUESTED MITIGATION NOT QUANTIFIED

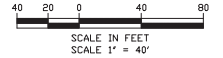
POE: 107+2343.98

MATCHLINE DWG HTL-08

MATCHLINE DWG HTL-10

LEGEND:

- FEMA 100 — FEMA 100 — FEMA 100 YEAR FLOOD LINE — ELEVATION VARIES
- LCSTV — LCSTV — LAND CAPABLE OF SUPPORTING TIDAL VEGETATION (LCSTV) — ELEVATION 4.1'
- C.J.L. — C.J.L. — COASTAL JURISDICTION LINE (CJL) — ELEVATION 2.9'
- HTL — HTL — HIGH TIDE LINE (HTL) — ELEVATION 3.04'
- MHW — MHW — MEAN HIGH WATER (MHW) — ELEVATION 1.60'
- MLW — MLW — MEAN LOW WATER (MLW) — ELEVATION -1.71'
- Field Located Wetland Boundary
- LOB — LIMITS OF PROJECT DISTURBANCE
- AMTRAK RIGHT OF WAY (ROW)
- PERMANENT IMPACT BELOW HIGH TIDE LINE
- TEMPORARY IMPACT BELOW HIGH TIDE LINE



FILE NAME: J:\2020\HWMT ACTIVITY 7_HTL.DWG
DATE PLOTTED: 05/02/2023 09:58 AM
PLOT SCALE: 1" = 40'
DRAWING PLOT TIME: 1:05

No.	Revisions	Date	By

This material is owned by and is the sole and exclusive property of the National Railroad Passenger Corporation (Norfolk Southern), and is loaned to you as a confidential basis solely for use in connection with the design and construction of Amtrak facilities and equipment. The reproduction, storage, sale or other disposition of this document without the express written consent of the National Railroad Passenger Corporation, Office of Engineering, is prohibited.

Office of Chief Engineer
STRUCTURES
National Railroad Passenger Corporation
30th Street Station, Philadelphia, Pennsylvania 19104

Approved	Date



ENVIRONMENTAL PERMIT PLANS
PLAN DATE: MAY 2, 2023

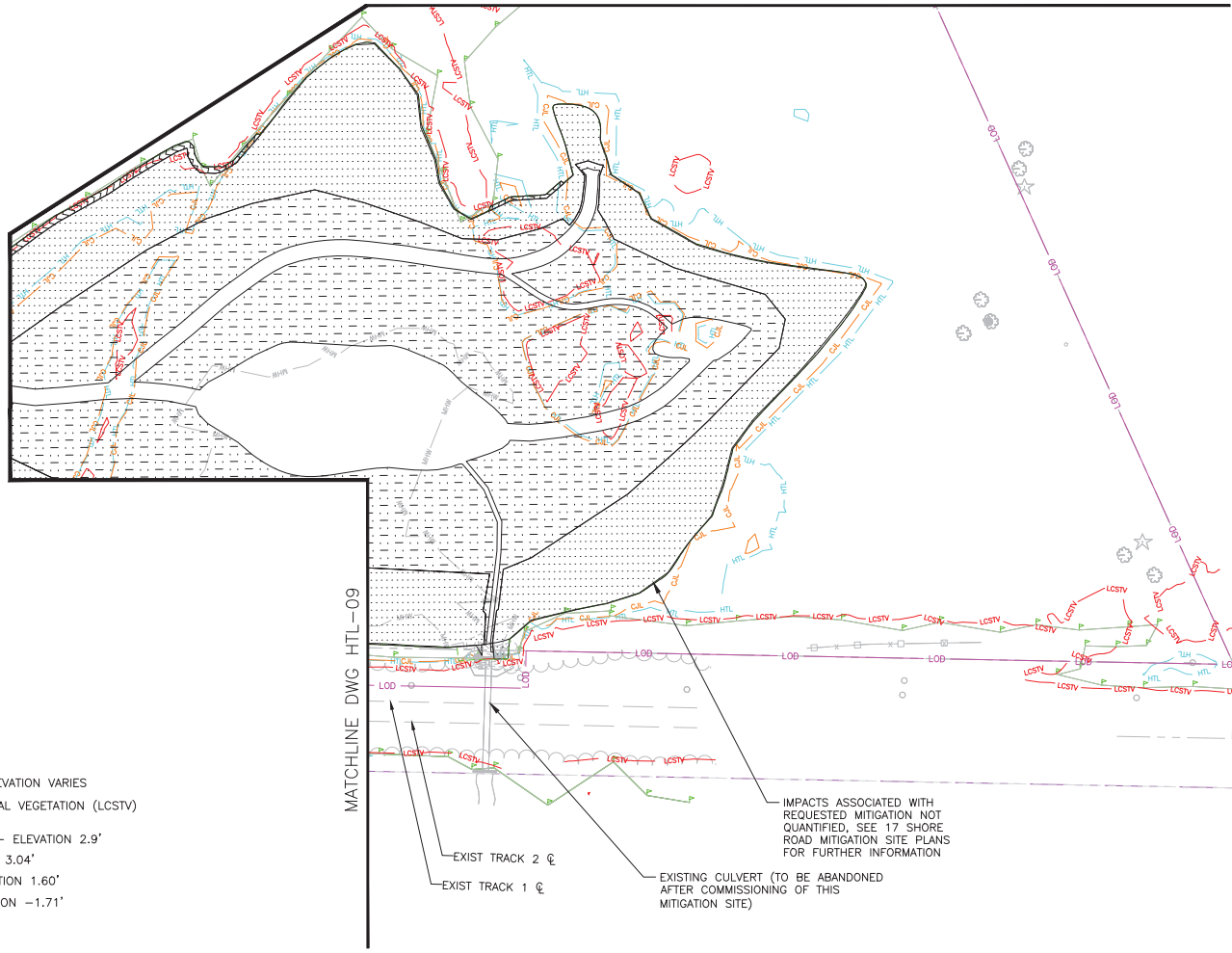
HARDESTY & HANOVER, LLC
ENGINEERING
1501 Broadway New York, NY 10036
1700 Market St. Suite 1050
Philadelphia, PA 19103

DESIGNED	CB	DRAWN	CB/MD	CHECKED	KM	DATE	5/2/2023	
CONNECTICUT REPLACEMENT OF MB 106.89 OVER CONNECTICUT RIVER HIGH TIDE LINE IMPACT PLAN								
Project Code	XXX-XXX	WBS:	62 OF 140	Dwg #				HTL-09

TO NEW HAVEN

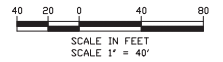
TO BOSTON

MATCHLINE DWG HTL-11



LEGEND:

- FEMA 100 — FEMA 100 — FEMA 100 YEAR FLOOD LINE — ELEVATION VARIES
- LCSTV — LCSTV — LAND CAPABLE OF SUPPORTING TIDAL VEGETATION (LCSTV) — ELEVATION 4.1'
- C.J.L. — C.J.L. — COASTAL JURISDICTION LINE (C.J.L.) — ELEVATION 2.9'
- HTL — HTL — HIGH TIDE LINE (HTL) — ELEVATION 3.04'
- MHW — MHW — MEAN HIGH WATER (MHW) — ELEVATION 1.60'
- MLW — MLW — MEAN LOW WATER (MLW) — ELEVATION -1.71'
- [Symbol] — [Symbol] — FIELD LOCATED WETLAND BOUNDARY
- [Symbol] — [Symbol] — LIMITS OF PROJECT DISTURBANCE
- [Symbol] — [Symbol] — AMTRAK RIGHT OF WAY (ROW)
- [Symbol] — PERMANENT IMPACT BELOW HIGH TIDE LINE
- [Symbol] — TEMPORARY IMPACT BELOW HIGH TIDE LINE



FILE NAME: J:\2020-2021\ACTIVITY 7_HTL.DWG
PLOT SCALE: 1" = 40'
DATE PLOTTED: 5/22/2023 10:53 AM
DRAWING PLOT TIME: 1:15

No.	Revisions	Date	By

This material is owned by and is the sole and exclusive property of the National Railroad Passenger Corporation (Norfolk), Office of Engineering, and is loaned on a confidential basis solely for use in connection with the design and construction of Amtrak facilities and equipment. The reproduction, storage, sale or other disposition of this document without the express written consent of the National Railroad Passenger Corporation, Office of Engineering, is prohibited.

Office of Chief Engineer
STRUCTURES
National Railroad Passenger Corporation
308 Street Station, Philadelphia, Pennsylvania 19104

Approved	Date

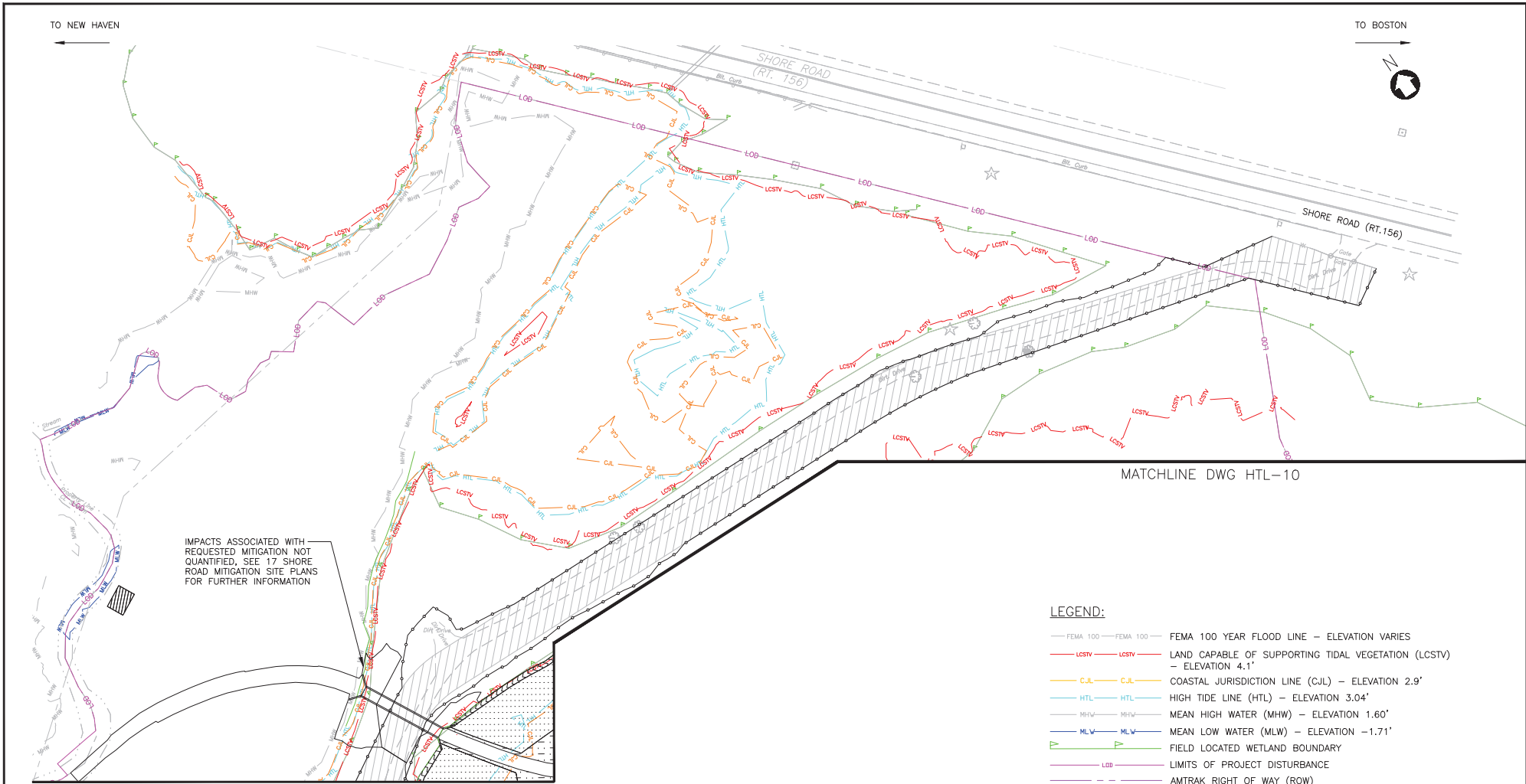


ENVIRONMENTAL PERMIT PLANS
PLAN DATE: MAY 2, 2023

HARDESTY & HANOVER, LLC
ENGINEERING
1501 Broadway New York, NY 10036
1700 Market St. Suite 1050
Philadelphia, PA 19103

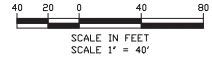
OLD SAYBROOK CONNECTICUT
REPLACEMENT OF MB 106.89 OVER CONNECTICUT RIVER
HIGH TIDE LINE IMPACT PLAN
Designed CB Drawn CBMD Checked KM Date 5/22/2023

Project Code	XXXX-XXX
WBS:	
Sheet No.	63 OF 140
Dwg. #:	HTL-10



IMPACTS ASSOCIATED WITH REQUESTED MITIGATION NOT QUANTIFIED. SEE 17 SHORE ROAD MITIGATION SITE PLANS FOR FURTHER INFORMATION

- LEGEND:**
- FEMA 100 — FEMA 100 — FEMA 100 YEAR FLOOD LINE — ELEVATION VARIES
 - LCSTV — LCSTV — LAND CAPABLE OF SUPPORTING TIDAL VEGETATION (LCSTV) — ELEVATION 4.1'
 - CJL — CJL — COASTAL JURISDICTION LINE (CJL) — ELEVATION 2.9'
 - HTL — HTL — HIGH TIDE LINE (HTL) — ELEVATION 3.04'
 - MHW — MHW — MEAN HIGH WATER (MHW) — ELEVATION 1.60'
 - MLW — MLW — MEAN LOW WATER (MLW) — ELEVATION -1.71'
 - FIELD LOCATED WETLAND BOUNDARY
 - LOD — LOD — LIMITS OF PROJECT DISTURBANCE
 - AMTRAK RIGHT OF WAY (ROW)
 - PERMANENT IMPACT BELOW HIGH TIDE LINE
 - TEMPORARY IMPACT BELOW HIGH TIDE LINE



No.	Revisions	Date	By

Amtrak[®]

This material is owned by and is the sole and exclusive property of the National Railroad Passenger Corporation (Amtrak), Office of Engineering, and is loaned on a non-exclusive basis solely for use in connection with the design and construction of Amtrak facilities and equipment. The reproduction, storage, sale or other disposition of this document without the express written consent of the National Railroad Passenger Corporation, Office of Engineering, is prohibited.

Office of Chief Engineer
STRUCTURES

National Railroad Passenger Corporation
30th Street Station, Philadelphia, Pennsylvania 19104

Approved	Date



ENVIRONMENTAL PERMIT PLANS
PLAN DATE: MAY 2, 2023

HARDESTY & HANOVER, LLC
ENGINEERING
1501 Broadway New York, NY 10036
1700 Market St. Suite 1050
Philadelphia, PA 19103

OLD SAYBROOK	CONNECTICUT	Project Code	XXXX-XXXX
REPLACEMENT OF MB 106.89 OVER CONNECTICUT RIVER		WBS:	
		Sheet No.	64 OF 140
HIGH TIDE LINE IMPACT PLAN		Dwg. #:	HTL-11
Designed	CB	Drawn	CB/MD
Checked	KM	Date	5/22/2023

FILE NAME: J:\2023\HWYACTIVITY\ACTIVITY 7_HTL.DWG
 PLOT SCALE: 1" = 40'
 DRAWING PLOT TIME: 1:15

TO NEW HAVEN

TO BOSTON



LEGEND:

- FEMA 100 — FEMA 100 — FEMA 100 YEAR FLOOD LINE — ELEVATION VARIES
- LCSTV — LCSTV — LAND CAPABLE OF SUPPORTING TIDAL VEGETATION (LCSTV) — ELEVATION 4.1'
- C-JL — C-JL — COASTAL JURISDICTION LINE (C-JL) — ELEVATION 2.9'
- HTL — HTL — HIGH TIDE LINE (HTL) — ELEVATION 3.04'
- MHW — MHW — MEAN HIGH WATER (MHW) — ELEVATION 1.60'
- MLW — MLW — MEAN LOW WATER (MLW) — ELEVATION -1.71'
- FLD — FLD — FIELD LOCATED WETLAND BOUNDARY
- LDD — LDD — LIMITS OF PROJECT DISTURBANCE
- AMTRAK RIGHT OF WAY (ROW)
- PERMANENT IMPACT BELOW HIGH TIDE LINE
- TEMPORARY IMPACT BELOW HIGH TIDE LINE

FERRY LANDING STATE PARK
CTDEEP MARINE HEADQUARTERS

TEMPORARY PARKING AREA TO BE RESTORED WITH TOPSOIL AND SEED

BITUMINOUS CONCRETE FOR PERMANENT ADA COMPLIANT PARKING SPACES

TEMPORARY PARKING AREA TO BE RESTORED WITH TOPSOIL AND SEED

AREA NOT AVAILABLE FOR CONTRACTOR USE, LIMIT OF DISTURBANCE FOR INSTALLATION OF MITIGATION MEASURES DURING PHASE IV

CONCRETE SIDEWALK (TYP)

TREX WALKWAY

REMOVE EXISTING BOARDWALK

PROPOSED BOARDWALK

CL&P POLE NO. 4236 TO REMAIN

CL&P TRANSFORMER FOR BRIDGE
DISCONNECT SWITCH AND METERING EQUIPMENT

#3-4" CONDUIT IN TRENCH

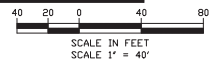
EXISTING CL&P TRANSFORMER FOR BRIDGE TO REMAIN UNTIL EXISTING BRIDGE IS DEMOLISHED

JUNCTION VAULT (TYP)

DRY WATER LINE FROM TANK TO WATER FILL PORT IN CTDEEP PARKING LOT

DRY SANITARY LINE FROM TANK TO SANITARY WASTE COLLECTION PORT IN CTDEEP PARKING LOT

MATCHLINE DWG HTL-07



FILE NAME: 21000-01-WPACT_ACTIVITY_7_HTL.DWG
PLOT SCALE: 1/4" = 10'-0"
DRAWING PLOT TIME: 1:15

No.	Revisions	Date	By

Amtrak®

This material is owned by and is the sole and exclusive property of the National Railroad Passenger Corporation (Norfolk), Office of Engineering, and is loaned on a non-confidential basis solely for use in connection with the design and construction of Amtrak facilities and equipment. The reproduction, storage, sale or other disposition of this document without the express written consent of the National Railroad Passenger Corporation, Office of Engineering is prohibited.

Office of Chief Engineer
STRUCTURES

National Railroad Passenger Corporation
30th Street Station, Philadelphia, Pennsylvania 19104

Approved	Date



ENVIRONMENTAL PERMIT PLANS
PLAN DATE: MAY 2, 2023

HARDESTY & HANOVER, LLC
ENGINEERING
1501 Broadway New York, NY 10036
1700 Market St. Suite 1050
Philadelphia, PA 19103

OLD SAYBROOK	CONNECTICUT	Project Code	XXXX-XXXX
REPLACEMENT OF MB 106.89 OVER CONNECTICUT RIVER		WBS:	
		Sheet No.	65 OF 140
HIGH TIDE LINE IMPACT PLAN		Dwg. #	HTL-12
		Designed	CB
Drawn	CB/MD	Checked	KM
Date	5/22/2023		