



Host Railroad Report

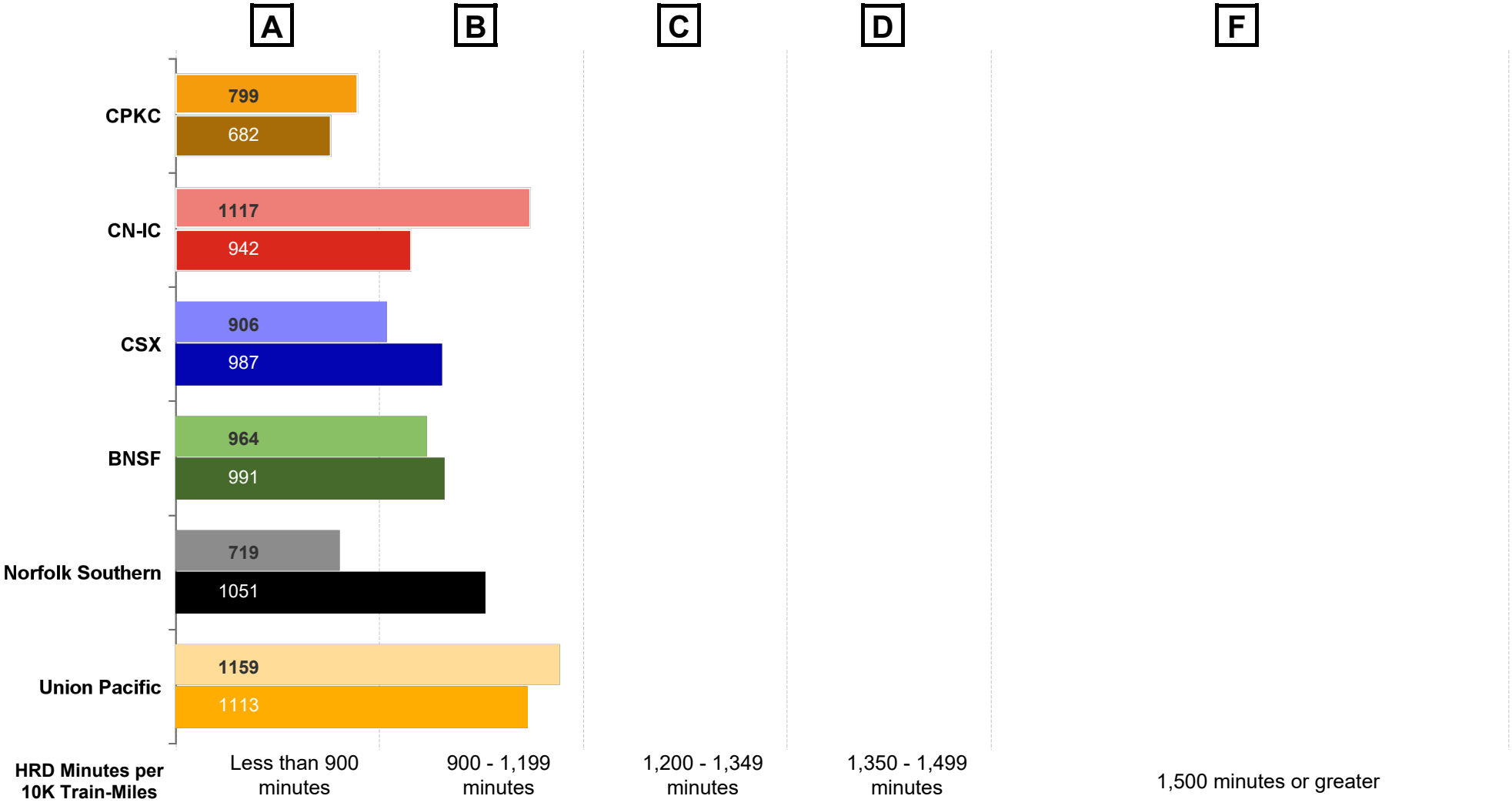
Amtrak Train Performance on Host Railroads

Data through September 2024

Host Railroad Report Card Update

Current Month and 1 Year Snapshot

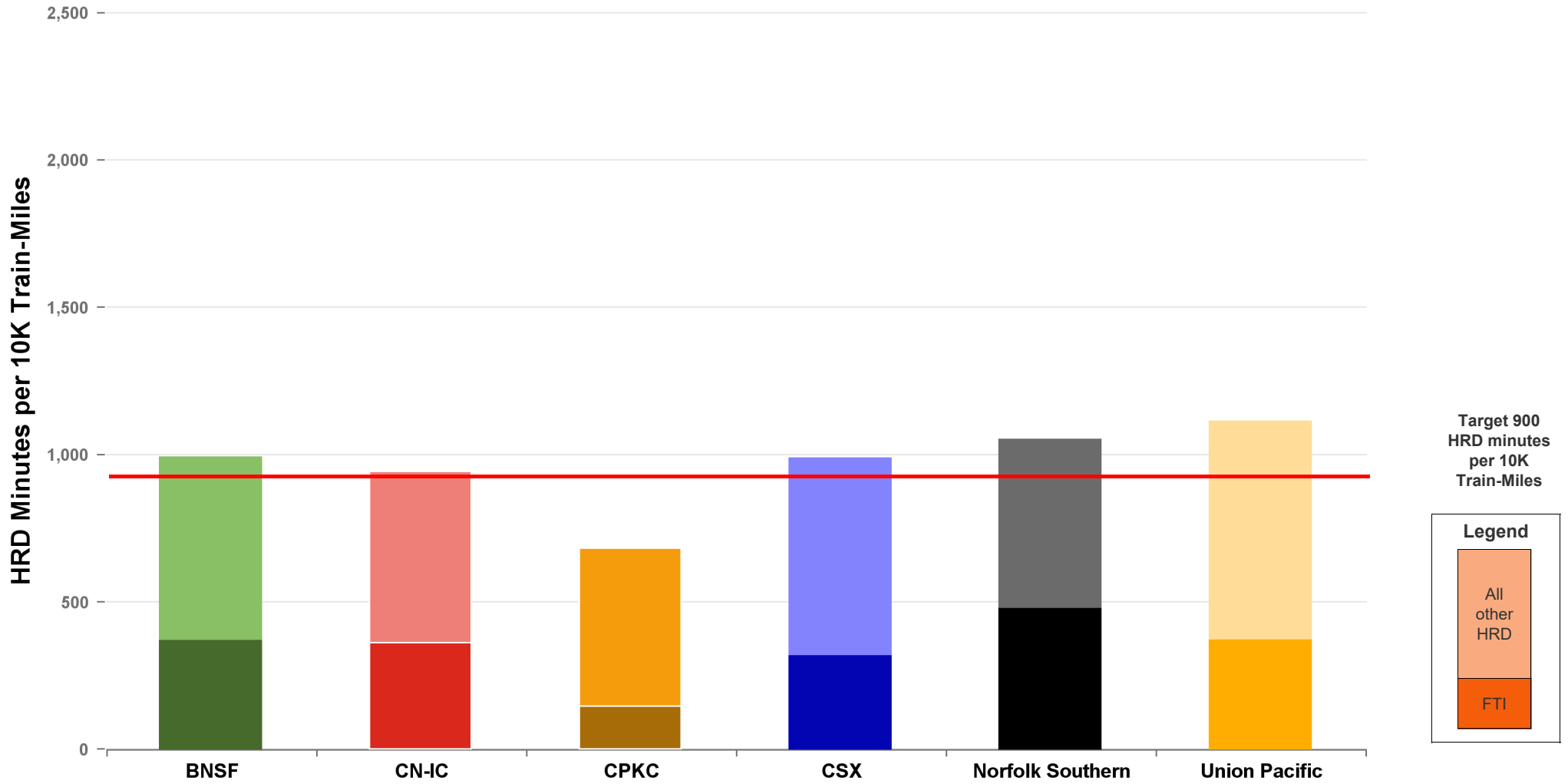
A monthly update of the Host Railroad Report Card, which grades the six major host railroads based on host responsible delay (HRD) minutes per 10,000 train-miles for the current month (lighter shade) and the most recent 12 months.



Total Host-Responsible Delays

1 Year Snapshot

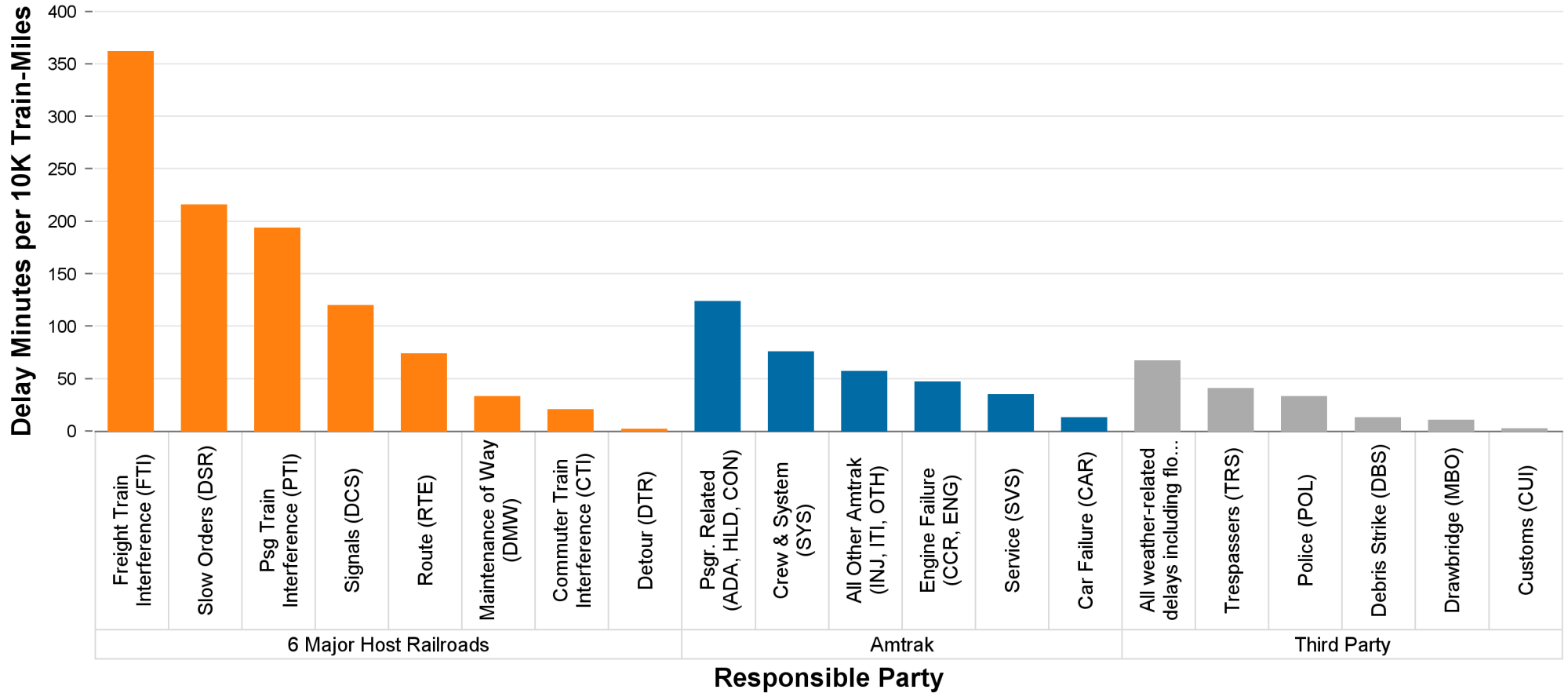
Total host-responsible delay (HRD) minutes per 10,000 train-miles incurred by Amtrak trains on the six major host railroads, with delays attributable to freight train interference (FTI) shaded.



Delays to Amtrak Trains by Responsible Party

1 Year Snapshot

Delay minutes per 10,000 train-miles on the six major host railroads categorized by delay type and responsible party.

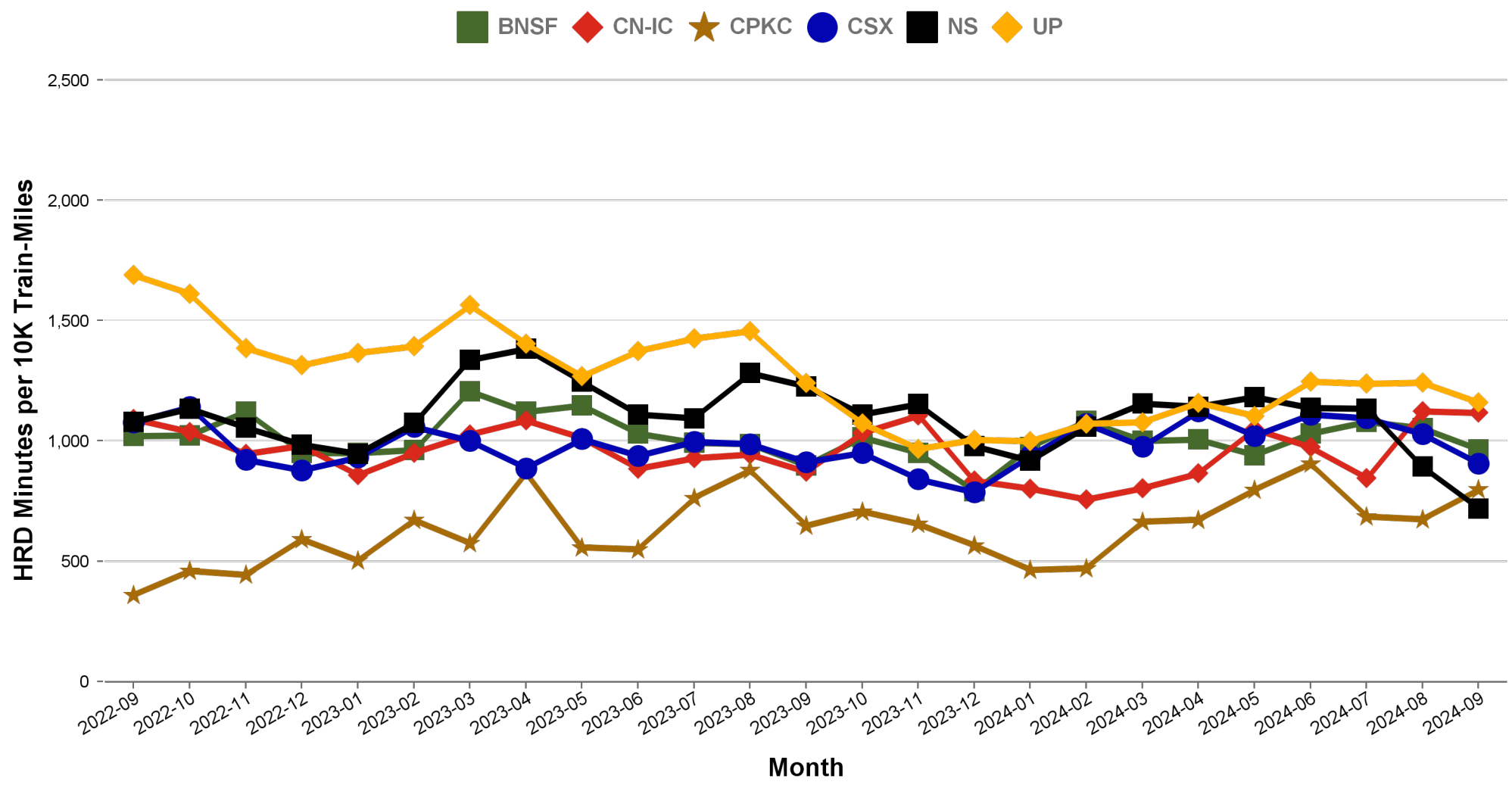


Responsible Party	6 Major Host Railroads	Amtrak	Third Party
Delay Minutes per 10K Train-Miles	1016	351	166
Percentage of Total Delays	66.3%	22.9%	10.8%

Total Host-Responsible Delays

2 Year Snapshot

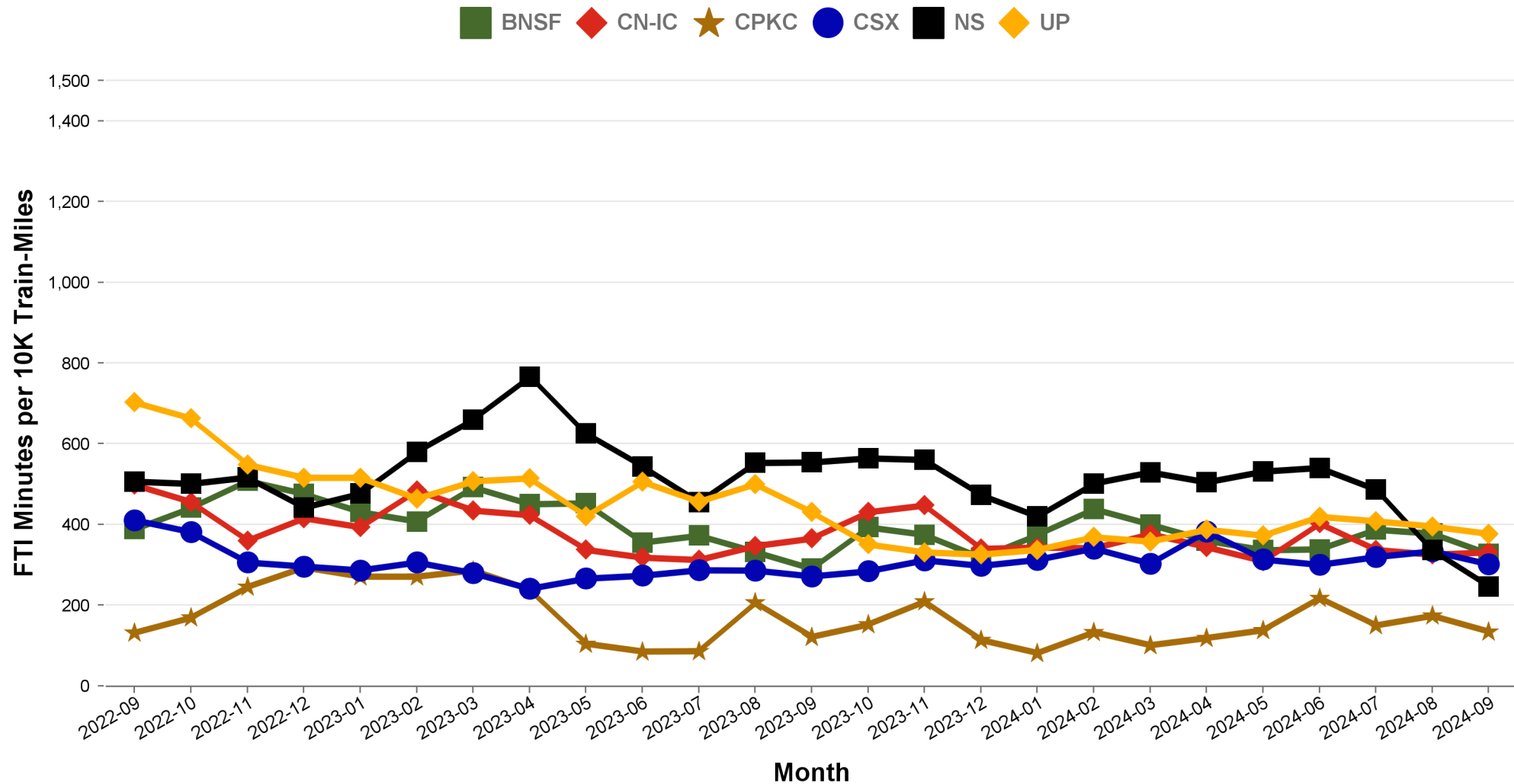
Total host-responsible delay (HRD) minutes per 10,000 train-miles incurred by Amtrak trains on each of the six major host railroads for the most recent two years.



Freight Train Interference Delays

2 Year Snapshot

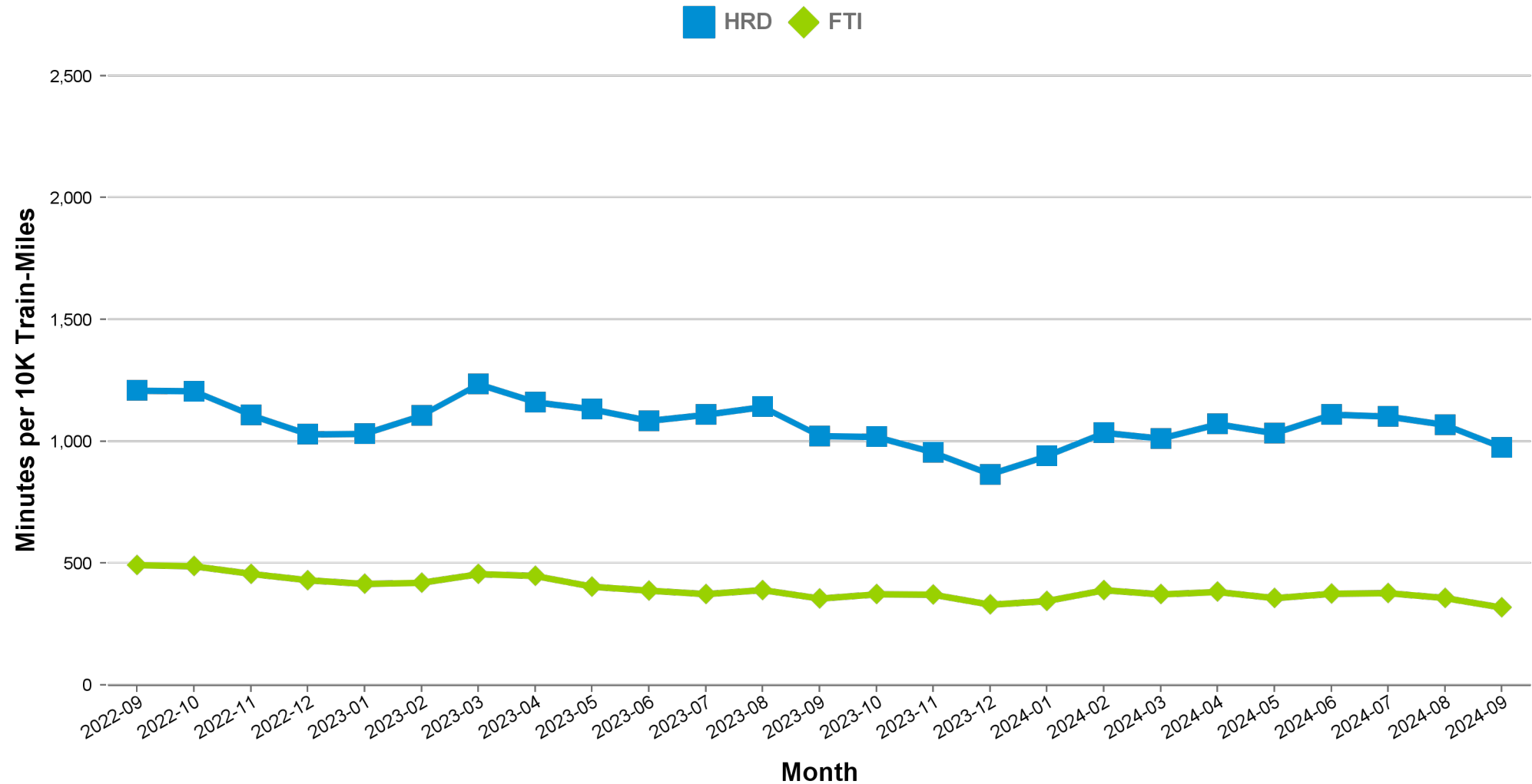
Total delay minutes per 10,000 train-miles attributable to freight train interference (FTI) incurred by Amtrak trains on each of the six major host railroads for the most recent two years.



Aggregated Host Railroad Performance Trend

2 Year Snapshot

Total host-responsible delay (HRD) and freight interference (FTI) minutes per 10,000 train-miles incurred by Amtrak trains, aggregated for the six major host railroads for the most recent two years.



Minutes of Delay per 10K Train Miles by Host for September 2024

Host	Service	Total Host Responsible Delays		Largest Two Delay Categories - Current Month				Route Miles
		Current Month	Most Recent 12 Months	#1		#2		
Target		900	900					
BNSF	California Zephyr	664	772	DSR	229	FTI	208	1027
	Carl Sandburg / Illinois Zephyr	794	809	DSR	367	FTI	194	257
	Cascades	1242	1429	FTI	372	DSR	280	317
	Coast Starlight	1352	1257	RTE	347	FTI	338	158
	Empire Builder	628	819	FTI	339	DSR	124	2147
	Heartland Flyer	1570	1528	DSR	962	FTI	529	236
	Pacific Surfliner	2906	1429	DMW	670	DCS	621	22
	San Joaquins	1074	1101	PTI	440	FTI	310	284
	Southwest Chief	870	811	FTI	334	DSR	265	2206
	Sunset Ltd	1008	1073	DSR	595	RTE	203	190
Texas Eagle	2538	2020	DSR	1663	FTI	774	116	
CN-IC	Blue Water	811	546	FTI	302	DCS	299	159
	City Of New Orleans	1080	853	DSR	296	FTI	271	930
	Illini / Saluki	565	736	DSR	180	PTI	133	304
	Lincoln Service	2293	2010	FTI	1441	DSR	437	35
	Lincoln / Missouri	2901	2654	FTI	1589	DSR	457	35
	Texas Eagle	1482	1879	FTI	705	DCS	457	35
	Wolverine	3900	1629	DSR	2520	DCS	791	27
	CPKC	Adirondack	1612	1007	PTI	868	DSR	465
Borealis	767	935	DSR	228	FTI	149	376	
Empire Builder	736	690	FTI	236	DSR	201	384	
Ethan Allen Express	1860	1836	DSR	844	PTI	570	60	
Hiawatha	356	239	DCS	216	FTI	42	53	
CSX	Auto Train	1076	1274	FTI	472	DSR	237	898
	Capitol Ltd	903	677	FTI	546	RTE	149	307
	Cardinal	738	743	FTI	450	DSR	117	703
	Carolinian	1736	1730	PTI	450	FTI	371	295
	Downeaster	705	632	PTI	361	DCS	137	107
	Lake Shore Ltd	592	701	FTI	202	RTE	140	741
	Maple Leaf	754	843	FTI	399	DSR	133	298
	New York - Niagara Falls	661	713	FTI	323	DSR	154	296
	Palmetto	958	1008	FTI	330	PTI	258	659
	Pere Marquette	313	236	DSR	177	DCS	68	135
	Richmond / Newport News / Norfolk	1197	1460	FTI	288	PTI	245	189
	Silver Meteor	802	910	FTI	300	DSR	160	1152
	Silver Star	930	985	PTI	266	DSR	223	1209
NS	Blue Water	1538	2021	FTI	741	DSR	360	39
	Capitol Ltd	865	1112	FTI	392	RTE	223	481
	Cardinal	1432	1409	PTI	588	FTI	425	79
	Carolinian	490	787	PTI	264	FTI	93	202
	Crescent	657	1266	FTI	177	DCS	154	1141
	Lake Shore Ltd	797	1090	FTI	405	RTE	185	339
	Pennsylvanian	651	792	FTI	306	RTE	175	249
	Pere Marquette	968	1638	FTI	416	DSR	201	39
	Piedmont	706	801	PTI	303	FTI	123	173
	Richmond / Newport News / Norfolk	674	937	FTI	322	DSR	139	81
	Roanoke	547	771	PTI	257	FTI	137	216
	Silver Star	665	575	FTI	388	PTI	132	28
	Wolverine	1327	2023	FTI	624	DSR	276	39
	UP	California Zephyr	1001	1113	DSR	360	FTI	314
Capitol Corridor		541	575	PTI	201	DCS	91	171
Cascades		2224	1602	DSR	871	FTI	560	125
Coast Starlight		1574	1428	FTI	411	DCS	402	1162
Lincoln Service		983	965	FTI	471	PTI	322	231
Lincoln / Missouri		861	826	FTI	375	PTI	222	502
Missouri		793	762	FTI	421	PTI	162	271
Pacific Surfliner		1576	1373	PTI	596	DCS	595	174
San Joaquins		1114	1265	PTI	433	DSR	294	88
Sunset Ltd		1107	1266	FTI	537	DSR	224	1784
Texas Eagle		1640	1381	FTI	835	DSR	508	1073

Minutes of Delay per 10K Train Miles by Host for September 2024

Host	Service	Total Host Responsible Delays		Largest Two Delay Categories - Current Month				Route Miles
		Current Month	Most Recent 12 Months	#1		#2		
Target		900	900					
Amtrak	Adirondack	428	475	PTI	141	DCS	104	100
	Blue Water	999	520	DSR	834	PTI	66	99
	Ethan Allen Express	399	358	RTE	136	PTI	111	100
	Maple Leaf	279	316	RTE	92	DCS	50	109
	New York - Albany	170	305	PTI	72	CTI	38	81
	New York - Niagara Falls	419	524	PTI	141	DCS	75	109
	Wolverine	1244	720	DSR	925	PTI	166	99
BBrRR	Cardinal	1346	1396	FTI	557	PTI	514	132
CN-Canada	Adirondack	5708	7107	DSR	3352	RTE	1390	49
Fla DOT	Silver Meteor	1343	1244	CTI	680	DCS	364	68
	Silver Star	1052	1107	CTI	763	DSR	164	68
FR	Auto Train	3126	5035	CTI	1711	DSR	979	16
	Silver Meteor	3950	3614	DCS	1265	CTI	798	61
	Silver Star	3710	2572	DCS	1565	CTI	1009	61
MADOT	Springfield Shuttles	659	820	DSR	412	DCS	142	36
	Vermonter	263	874	PTI	175	DCS	47	50
MBTA	Downeaster	890	1063	DCS	267	CTI	215	38
Metra	Borealis	928	1247	CTI	328	DSR	262	33
	Empire Builder	2021	2231	CTI	1287	PTI	318	29
	Hiawatha	1551	2034	CTI	1052	DCS	143	29
MIDOT	Blue Water	136	417	PTI	114	RTE	23	22
	Wolverine	747	641	PTI	465	DSR	224	134
MNRR	Acela	1546	1662	DSR	897	CTI	420	56
	Adirondack	1117	1164	CTI	594	DSR	233	64
	Ethan Allen Express	1565	1153	CTI	840	DSR	340	64
	Lake Shore Ltd	1353	992	DSR	576	CTI	351	64
	Maple Leaf	960	801	CTI	437	DSR	269	64
	New York - Albany	1106	1044	CTI	601	DSR	269	64
	New York - Niagara Falls	1134	1352	CTI	737	DSR	222	64
	Richmond / Newport News / Norfolk	1601	1782	DSR	854	CTI	478	56
	Vermonter	2485	2719	DSR	1259	CTI	747	56
NECR	Vermonter	524	1363	DSR	485	DCS	29	192
NMDOT	Southwest Chief	1718	3034	CTI	1207	PTI	274	80
SCRRA	Coast Starlight	1607	1641	PTI	904	CTI	372	48
	Pacific Surfliner	1208	987	CTI	396	PTI	352	95
SDNRR	Pacific Surfliner	1111	914	CTI	511	PTI	295	60
Sounder	Cascades	797	918	PTI	401	CTI	181	20
	Coast Starlight	1191	2010	PTI	791	CTI	364	20
TRE	Texas Eagle	1317	558	CTI	562	RTE	431	33
VTR	Ethan Allen Express	1564	670	DSR	1528	DCS	20	91

The numbers included in this document are preliminary and are for informational purposes only.

Excludes hosts with fewer than 15 route miles.

Delays on the Amtrak-owned portion of the Northeast Corridor are shown in a separate report, with tighter delay standards.

Northeast Regional: Roanoke includes all trains between Roanoke and points on the NEC; Richmond / Newport News / Norfolk includes all trains between these locations and points on the NEC.

Minutes of Delay per 10K Train Miles by Service for September 2024

Service		Host	Total Host Responsible Delays		Largest Two Delay Categories - Current Month				Route Miles
			Current	Most	#1	#2			
Target			900	900					
Acela									
Acela		MNRR	1546	1662	DSR	897	CTI	420	56
All Other NEC Corridor Routes									
Northeast Regional	Richmond / Newport News / Norfolk	CSX	1197	1460	FTI	288	PTI	245	189
		NS	674	937	FTI	322	DSR	139	81
		MNRR	1601	1782	DSR	854	CTI	478	56
	Roanoke	NS	547	771	PTI	257	FTI	137	216
	Springfield Shuttles	MADOT	659	820	DSR	412	DCS	142	36
Non-NEC Corridor Routes									
Borealis		CPKC	767	935	DSR	228	FTI	149	376
		Metra	928	1247	CTI	328	DSR	262	33
Capitol Corridor		UP	541	575	PTI	201	DCS	91	171
Carolinian		CSX	1736	1730	PTI	450	FTI	371	295
		NS	490	787	PTI	264	FTI	93	202
Cascades		BNSF	1242	1429	FTI	372	DSR	280	317
		UP	2224	1602	DSR	871	FTI	560	125
		Sounder	797	918	PTI	401	CTI	181	20
Downeaster		CSX	705	632	PTI	361	DCS	137	107
		MBTA	890	1063	DCS	267	CTI	215	38
Empire	Adirondack	CPKC	1612	1007	PTI	868	DSR	465	178
		Amtrak	428	475	PTI	141	DCS	104	100
		CN-Canada	5708	7107	DSR	3352	RTE	1390	49
		MNRR	1117	1164	CTI	594	DSR	233	64
	Ethan Allen Express	CPKC	1860	1836	DSR	844	PTI	570	60
		Amtrak	399	358	RTE	136	PTI	111	100
		MNRR	1565	1153	CTI	840	DSR	340	64
		VTR	1564	670	DSR	1528	DCS	20	91
	Maple Leaf	CSX	754	843	FTI	399	DSR	133	298
		Amtrak	279	316	RTE	92	DCS	50	109
		MNRR	960	801	CTI	437	DSR	269	64
	New York - Albany	Amtrak	170	305	PTI	72	CTI	38	81
		MNRR	1106	1044	CTI	601	DSR	269	64
	New York - Niagara Falls	CSX	661	713	FTI	323	DSR	154	296
		Amtrak	419	524	PTI	141	DCS	75	109
		MNRR	1134	1352	CTI	737	DSR	222	64
Heartland Flyer		BNSF	1570	1528	DSR	962	FTI	529	236
Hiawatha		CPKC	356	239	DCS	216	FTI	42	53
		Metra	1551	2034	CTI	1052	DCS	143	29
Illinois	Carl Sandburg / Illinois Zephyr	BNSF	794	809	DSR	367	FTI	194	257
	Illini / Saluki	CN-IC	565	736	DSR	180	PTI	133	304
	Lincoln Service	CN-IC	2293	2010	FTI	1441	DSR	437	35
		UP	983	965	FTI	471	PTI	322	231
Lincoln / Missouri		CN-IC	2901	2654	FTI	1589	DSR	457	35
		UP	861	826	FTI	375	PTI	222	502
Michigan	Blue Water	CN-IC	811	546	FTI	302	DCS	299	159
		NS	1538	2021	FTI	741	DSR	360	39
		Amtrak	999	520	DSR	834	PTI	66	99
		MIDOT	136	417	PTI	114	RTE	23	22
	Pere Marquette	CSX	313	236	DSR	177	DCS	68	135
		NS	968	1638	FTI	416	DSR	201	39
	Wolverine	CN-IC	3900	1629	DSR	2520	DCS	791	27
		NS	1327	2023	FTI	624	DSR	276	39
		Amtrak	1244	720	DSR	925	PTI	166	99
		MIDOT	747	641	PTI	465	DSR	224	134
Missouri		UP	793	762	FTI	421	PTI	162	271
Pacific Surfliner		BNSF	2906	1429	DMW	670	DCS	621	22
		UP	1576	1373	PTI	596	DCS	595	174
		SCRRA	1208	987	CTI	396	PTI	352	95
		SDNRR	1111	914	CTI	511	PTI	295	60
Pennsylvanian		NS	651	792	FTI	306	RTE	175	249
Piedmont		NS	706	801	PTI	303	FTI	123	173
San Joaquins		BNSF	1074	1101	PTI	440	FTI	310	284
		UP	1114	1265	PTI	433	DSR	294	88
Vermont		MADOT	263	874	PTI	175	DCS	47	50
		MNRR	2485	2719	DSR	1259	CTI	747	56
		NECR	524	1363	DSR	485	DCS	29	192

Minutes of Delay per 10K Train Miles by Service for September 2024

Service	Host	Total Host Responsible Delays		Largest Two Delay Categories - Current Month				Route Miles
		Current	Most	#1		#2		
Target		900	900					
Long-Distance Routes								
Auto Train	CSX	1076	1274	FTI	472	DSR	237	898
	FR	3126	5035	CTI	1711	DSR	979	16
California Zephyr	BNSF	664	772	DSR	229	FTI	208	1027
	UP	1001	1113	DSR	360	FTI	314	1381
Capitol Ltd	CSX	903	677	FTI	546	RTE	149	307
	NS	865	1112	FTI	392	RTE	223	481
Cardinal	CSX	738	743	FTI	450	DSR	117	703
	NS	1432	1409	PTI	588	FTI	425	79
	BBrRR	1346	1396	FTI	557	PTI	514	132
City Of New Orleans	CN-IC	1080	853	DSR	296	FTI	271	930
Coast Starlight	BNSF	1352	1257	RTE	347	FTI	338	158
	UP	1574	1428	FTI	411	DCS	402	1162
	SCRRA	1607	1641	PTI	904	CTI	372	48
	Sounder	1191	2010	PTI	791	CTI	364	20
Crescent	NS	657	1266	FTI	177	DCS	154	1141
Empire Builder	BNSF	628	819	FTI	339	DSR	124	2147
	CPKC	736	690	FTI	236	DSR	201	384
	Metra	2021	2231	CTI	1287	PTI	318	29
Lake Shore Ltd	CSX	592	701	FTI	202	RTE	140	741
	NS	797	1090	FTI	405	RTE	185	339
	MNRR	1353	992	DSR	576	CTI	351	64
Palmetto	CSX	958	1008	FTI	330	PTI	258	659
Silver Meteor	CSX	802	910	FTI	300	DSR	160	1152
	Fla DOT	1343	1244	CTI	680	DCS	364	68
	FR	3950	3614	DCS	1265	CTI	798	61
Silver Star	CSX	930	985	PTI	266	DSR	223	1209
	NS	665	575	FTI	388	PTI	132	28
	Fla DOT	1052	1107	CTI	763	DSR	164	68
	FR	3710	2572	DCS	1565	CTI	1009	61
Southwest Chief	BNSF	870	811	FTI	334	DSR	265	2206
	NMDOT	1718	3034	CTI	1207	PTI	274	80
Sunset Ltd	BNSF	1008	1073	DSR	595	RTE	203	190
	UP	1107	1266	FTI	537	DSR	224	1784
Texas Eagle	BNSF	2538	2020	DSR	1663	FTI	774	116
	CN-IC	1482	1879	FTI	705	DCS	457	35
	UP	1640	1381	FTI	835	DSR	508	1073
	TRE	1317	558	CTI	562	RTE	431	33

The numbers included in this document are preliminary and are for informational purposes only.

Excludes hosts with fewer than 15 route miles.

Delays on the Amtrak-owned portion of the Northeast Corridor are shown in a separate report, with tighter delay standards.

Northeast Regional: Roanoke includes all trains between Roanoke and points on the NEC; Richmond / Newport News /

Norfolk includes all trains between these locations and points on the NEC.

Host Railroad Report - All-Stations and Customer OTP for September 2024

Service	All-Stations OTP		Customer OTP		Avg Mins Late per Late Rider**	
	Current Month	Most Recent 12 Months	Current Month	Most Recent 12 Months	Current Month	Most Recent 12 Months
Amtrak System	76.0%	75.8%	74.1%	74.9%	46	54
NEC Corridor Routes	80.2%	82.3%	74.6%	78.4%	38	43
Minimum Standard			80.0%	80.0%		
Acela*	75.9%	81.1%	70.5%	77.8%	32	34
Keystone	92.8%	93.4%	91.6%	92.1%	31	37
Northeast Regional	77.3%	78.9%	72.3%	75.6%	41	46
On Spine Northeast Regional	78.2%	82.7%	73.7%	80.4%	41	44
Richmond / Newport News / Norfolk	72.0%	72.0%	68.9%	68.5%	41	47
Roanoke	78.3%	75.4%	71.9%	71.6%	42	50
Springfield Shuttles	89.2%	87.3%	88.1%	87.3%	30	37
Non-NEC Corridor Routes	79.6%	79.8%	76.0%	76.3%	41	46
Minimum Standard			80.0%	80.0%		
Borealis	84.1%	67.1%	75.5%	51.6%	51	45
Capitol Corridor	93.2%	91.5%	91.2%	89.0%	34	38
Carolinian	51.1%	54.1%	48.8%	50.9%	63	64
Cascades	70.7%	64.7%	61.9%	56.7%	42	47
Downeaster	87.0%	89.0%	81.2%	81.7%	29	37
Empire	80.5%	80.6%	81.8%	81.1%	33	43
Adirondack	68.8%	77.0%	72.2%	75.5%	40	38
Berkshire Flyer	93.8%	65.6%	91.3%	66.6%	18	46
Ethan Allen Express	61.6%	72.8%	51.2%	67.9%	31	40
Maple Leaf	75.1%	73.8%	76.5%	75.6%	30	47
New York - Albany	93.7%	89.6%	93.1%	88.9%	30	40
New York - Niagara Falls	80.4%	78.7%	78.2%	76.9%	34	48
Heartland Flyer	71.2%	72.3%	75.6%	69.6%	34	46
Hiawatha	91.0%	89.9%	86.8%	86.1%	42	36
Illinois	84.2%	79.1%	80.7%	77.3%	37	50
Carl Sandburg / Illinois Zephyr	88.7%	81.9%	88.4%	82.7%	56	47
Illini / Saluki	90.4%	82.4%	89.9%	83.1%	42	63
Lincoln Service	76.2%	74.6%	71.8%	71.5%	33	46
Lincoln / Missouri	60.0%	62.7%	58.7%	61.3%	39	47
Michigan	63.3%	70.6%	77.5%	73.0%	40	44
Blue Water	80.0%	78.9%	74.0%	75.0%	42	46
Pere Marquette	90.0%	88.2%	91.5%	84.5%	39	37
Wolverine	55.0%	65.9%	75.7%	69.6%	40	45
Missouri	83.5%	81.1%	80.6%	84.2%	36	44
Pacific Surfliner	76.9%	84.0%	72.3%	83.8%	38	43
Pennsylvanian	73.9%	70.3%	76.8%	70.1%	42	43
Piedmont	79.2%	81.8%	75.1%	73.7%	39	43
San Joaquins	80.1%	77.0%	75.9%	73.0%	54	45
Vermonteer	77.0%	65.5%	69.3%	68.2%	42	47
Long-Distance Routes	58.7%	54.1%	65.0%	57.5%	85	89
Minimum Standard			80.0%	80.0%		
Auto Train	76.7%	74.4%	79.9%	58.2%	103	85
California Zephyr	60.9%	44.1%	65.4%	48.5%	124	109
Capitol Ltd	73.2%	66.9%	79.8%	71.3%	51	62
Cardinal	57.0%	57.8%	54.3%	57.5%	98	72
City Of New Orleans	55.0%	64.7%	74.2%	77.2%	96	83
Coast Starlight	46.7%	54.5%	47.8%	57.5%	96	84
Crescent	64.1%	55.0%	75.1%	58.7%	82	73
Empire Builder	70.6%	54.6%	68.9%	55.5%	95	110
Lake Shore Ltd	85.1%	75.1%	87.3%	76.3%	43	63
Palmetto	57.8%	66.4%	61.6%	66.1%	58	55
Silver Meteor	56.7%	50.4%	57.6%	46.9%	53	86
Silver Star	48.6%	44.3%	53.5%	40.8%	70	81
Southwest Chief	38.5%	34.2%	47.9%	34.0%	119	122
Sunset Ltd	60.4%	51.2%	71.6%	60.0%	57	109
Texas Eagle	53.3%	56.6%	63.6%	62.5%	71	90

The numbers included in this document are preliminary and are for informational purposes only.

Northeast Regional: Roanoke includes all trains between Roanoke and points on the NEC; Richmond/Newport News/Norfolk includes all trains between these locations and points on the NEC.

* Acela on-time performance target is 90.0%

** Excludes on-time Customers



Host Railroad Responsible Delays

Code	Code Description	Explanation
CTI	Commuter Train Interference	Delays for meeting or following commuter trains
DCS	Signal Delays	Signal failure or All Other signal delays, wayside defect-detector false-alarms, defective road crossing protection, efficiency tests, drawbridge stuck open
DMW	Maintenance of Way	Maintenance of Way delays including holds for track repairs or MW foreman to clear
DSR	Slow Order Delays	Temporary slow orders, except heat or cold orders
DTR	Detour	Delays from detours
FTI	Freight Train Interference	Delays from freight trains
PTI	Passenger Train Interference	Delays for meeting or following All Other passenger trains
RTE	Routing	Routing-dispatching delays including diversions, late track bulletins, etc.

Amtrak Responsible Delays

Code	Code Description	Explanation
ADA	Passenger Related	All delays related to disabled passengers, wheel chair lifts, guide dogs, etc.
CAR	Car Failure	Mechanical failure on all types of cars
CCR	Cab Car Failure	Mechanical failure on Cab Cars
CON	Hold for Connection	Holding for connections from All Other trains or buses.
ENG	Locomotive Failure	Mechanical failure on engines.
HLD	Passenger Related	All delays related to passengers, checked-baggage, large groups, etc.
INJ	Injury Delay	Delay due to injured passengers or employees.
ITI	Initial Terminal Delay	Delay at initial terminal due to late arriving inbound trains causing late release of equipment.
OTH	Miscellaneous Delays	Lost-on-run, heavy trains, unable to make normal speed, etc.
SVS	Servicing	All switching and servicing delays
SYS	Crew & System	Delays related to crews including lateness, lone-engineer delays

Third-Party Delays

Code	Code Description	Explanation
CUI	Customs	U.S. and Canadian customs delays; Immigration-related delays
DBS	Debris	Debris strikes
MBO	Drawbridge Openings	Movable bridge openings for marine traffic where no bridge failure is involved
NOD	Unused Recovery Time	Wait for departure time
POL	Police-Related	Police/fire department holds on right-of-way or on-board trains
TRS	Trespassers	Trespasser incidents including road crossing accidents, trespasser / animal strikes, vehicle stuck on track ahead, bridge strikes
WTR	Weather-Related	All weather-related delays including floods/washouts, earthquake-related delays, heat or cold orders, slippery rail due to leaves

*These delay codes are applicable to Off-NEC routes only.