



Host Railroad Report

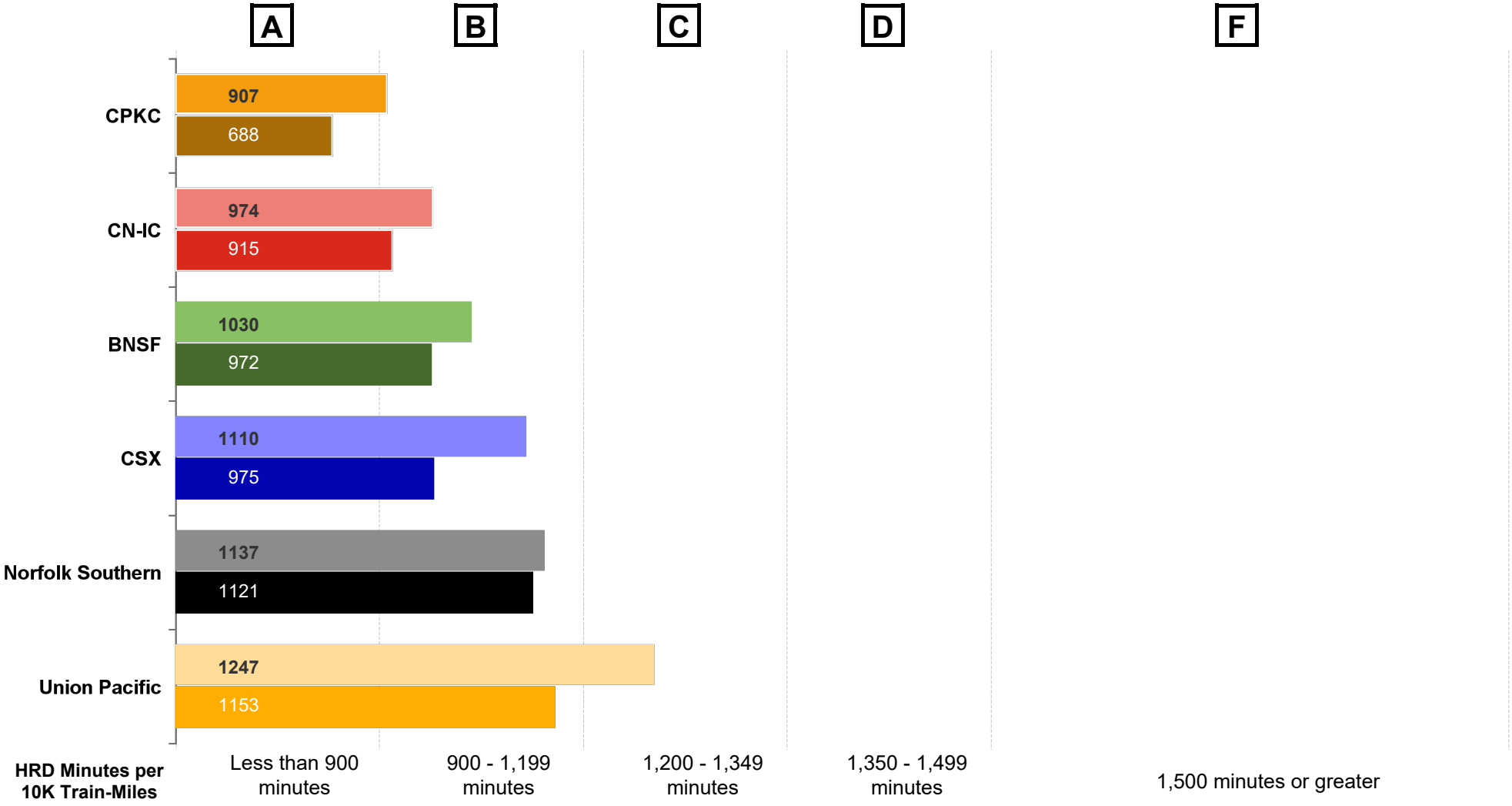
Amtrak Train Performance on Host Railroads

Data through June 2024

Host Railroad Report Card Update

Current Month and 1 Year Snapshot

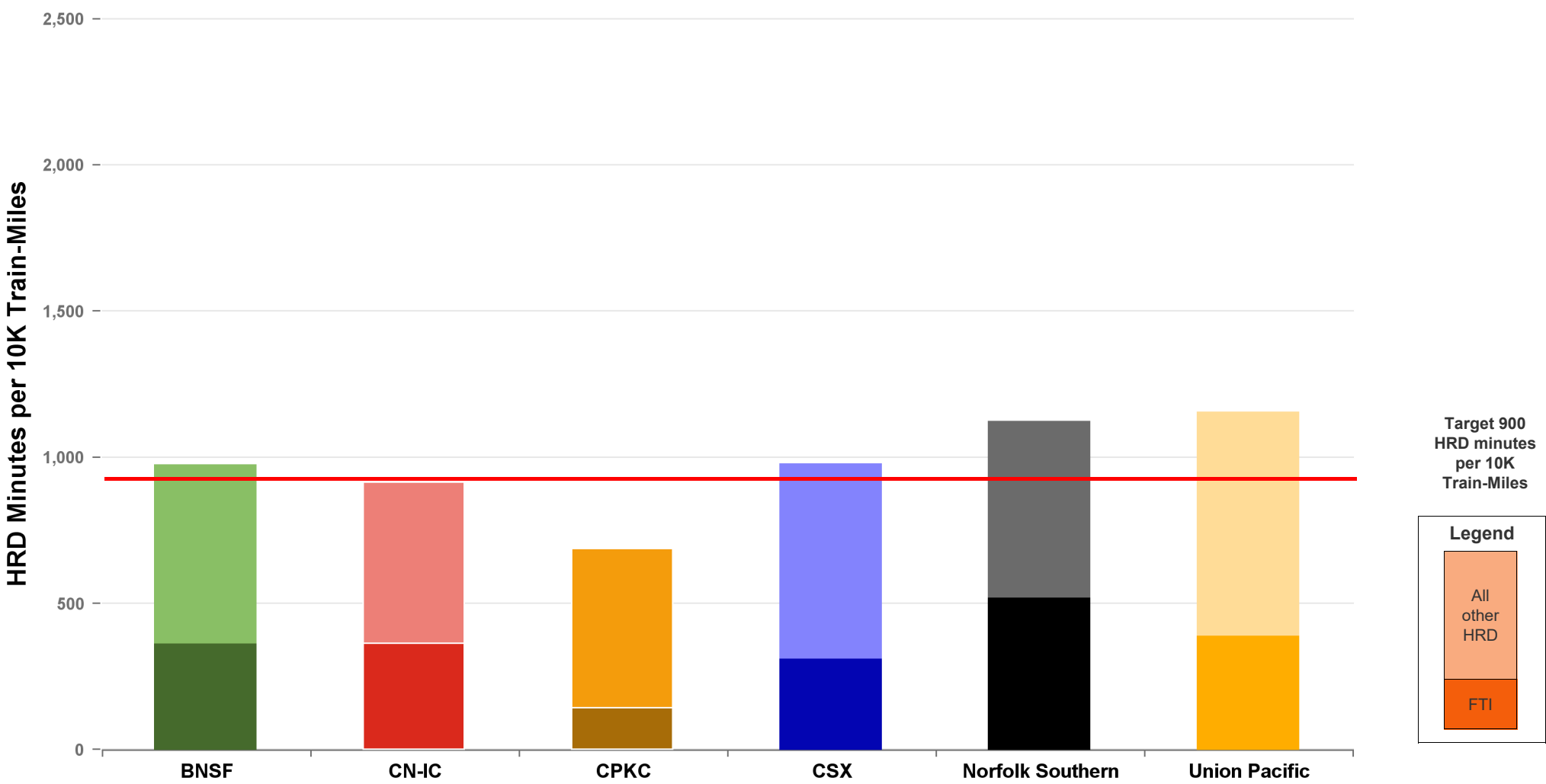
A monthly update of the Host Railroad Report Card, which grades the six major host railroads based on host responsible delay (HRD) minutes per 10,000 train-miles for the current month (lighter shade) and the most recent 12 months.



Total Host-Responsible Delays

1 Year Snapshot

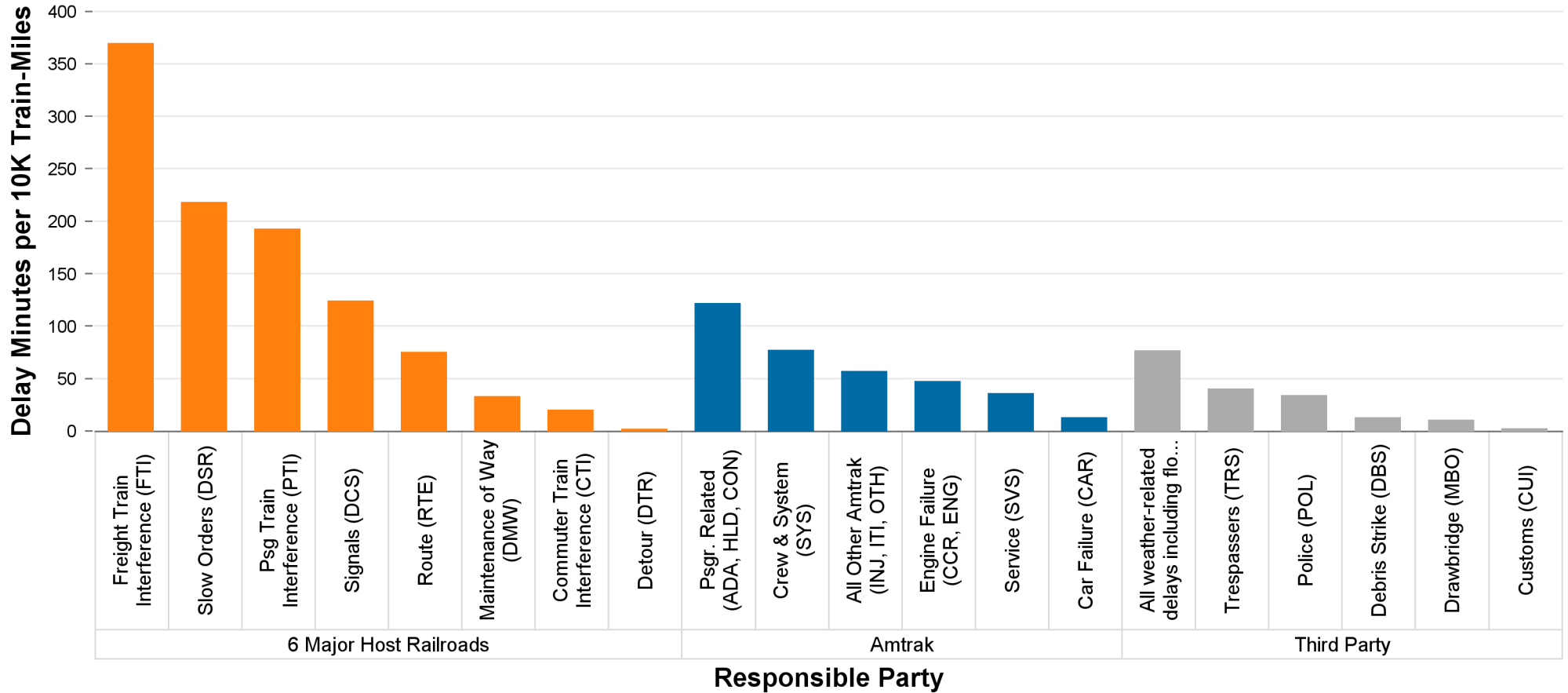
Total host-responsible delay (HRD) minutes per 10,000 train-miles incurred by Amtrak trains on the six major host railroads, with delays attributable to freight train interference (FTI) shaded.



Delays to Amtrak Trains by Responsible Party

1 Year Snapshot

Delay minutes per 10,000 train-miles on the six major host railroads categorized by delay type and responsible party.

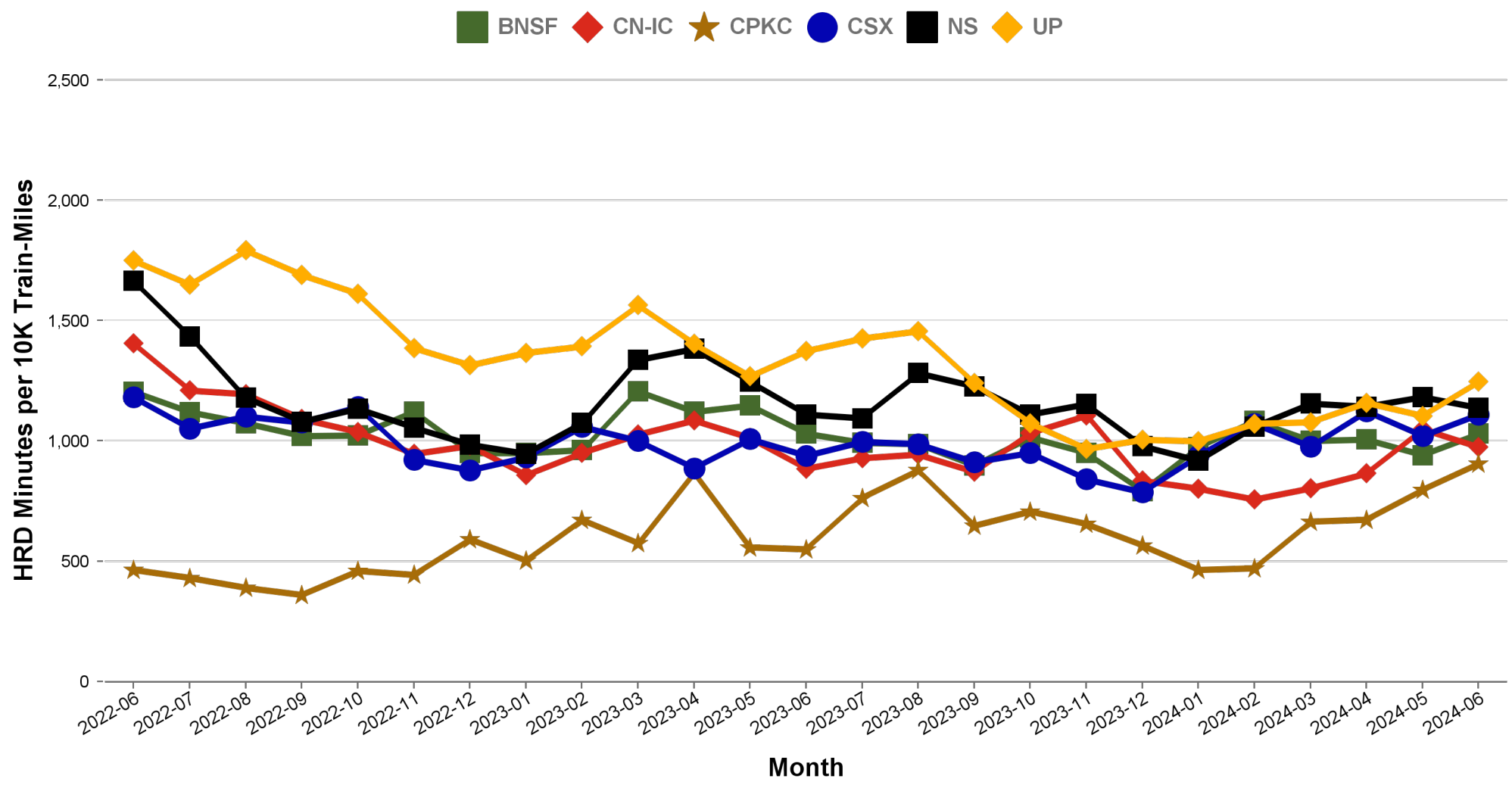


Responsible Party	6 Major Host Railroads	Amtrak	Third Party
Delay Minutes per 10K Train-Miles	1026	347	171
Percentage of Total Delays	66.4%	22.5%	11.1%

Total Host-Responsible Delays

2 Year Snapshot

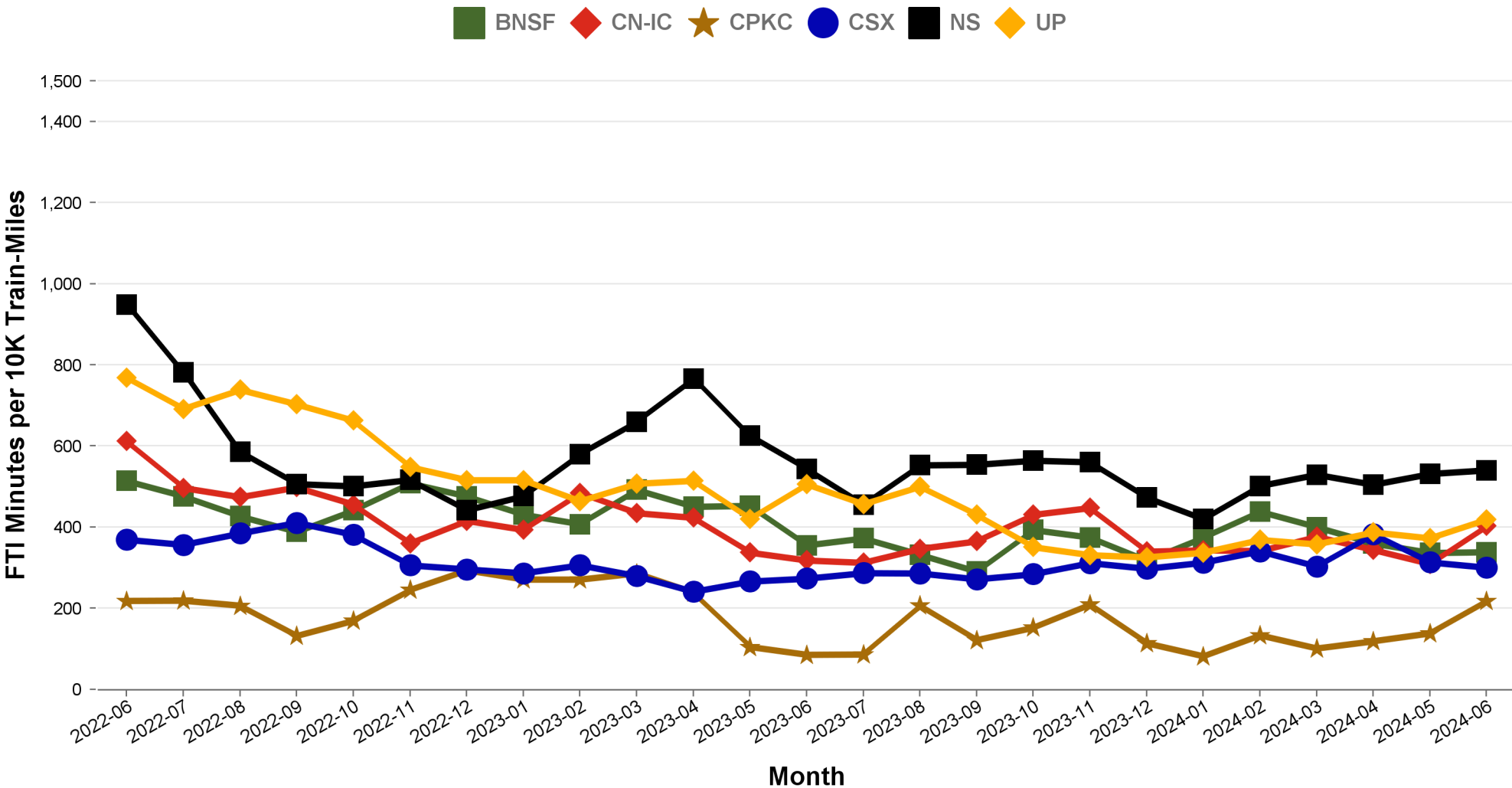
Total host-responsible delay (HRD) minutes per 10,000 train-miles incurred by Amtrak trains on each of the six major host railroads for the most recent two years.



Freight Train Interference Delays

2 Year Snapshot

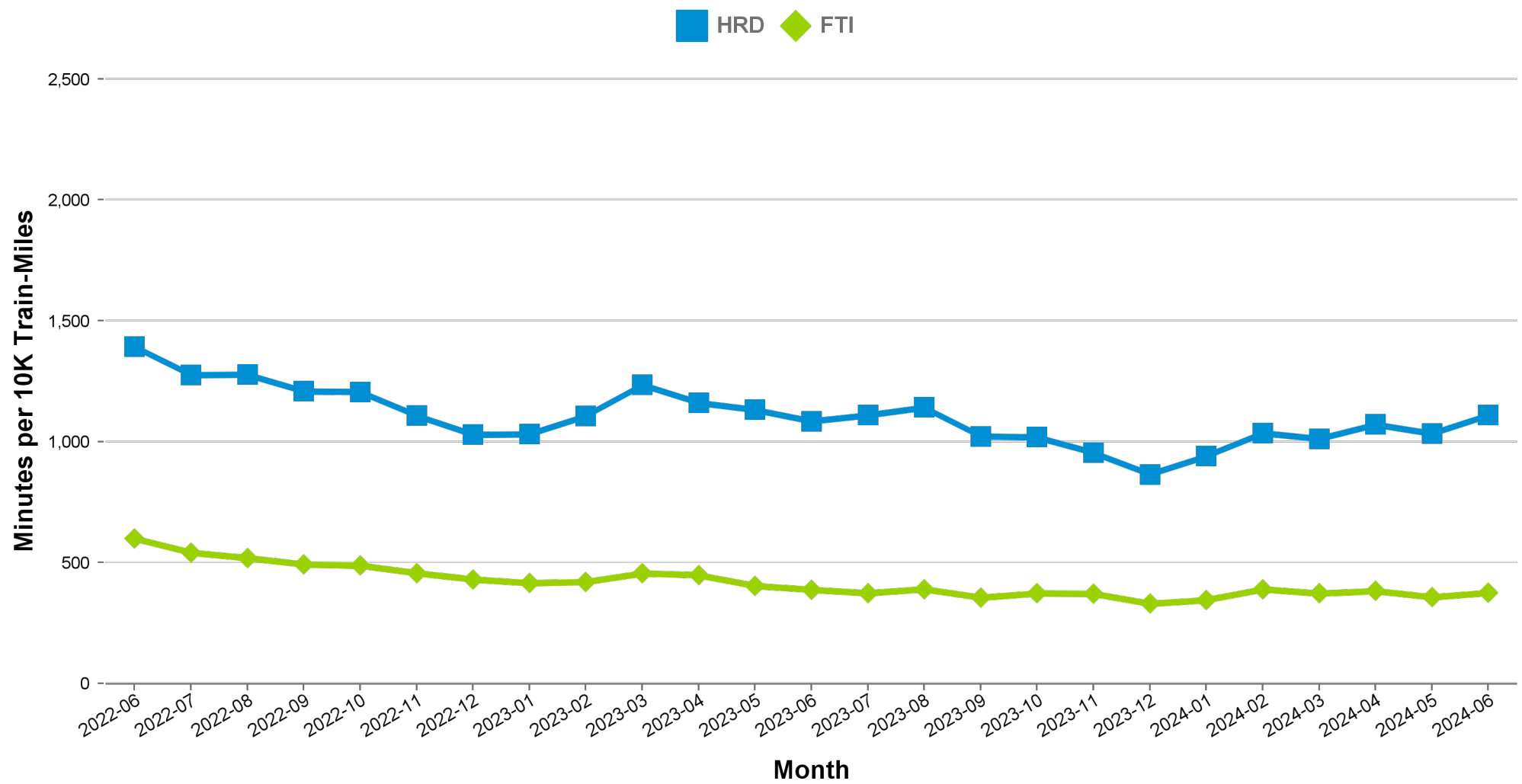
Total delay minutes per 10,000 train-miles attributable to freight train interference (FTI) incurred by Amtrak trains on each of the six major host railroads for the most recent two years.



Aggregated Host Railroad Performance Trend

2 Year Snapshot

Total host-responsible delay (HRD) and freight interference (FTI) minutes per 10,000 train-miles incurred by Amtrak trains, aggregated for the six major host railroads for the most recent two years.



Minutes of Delay per 10K Train Miles by Host for June 2024

Host	Service	Total Host Responsible Delays		Largest Two Delay Categories - Current Month				Route Miles
		Current Month	Most Recent 12 Months	#1		#2		
Target		900	900					
BNSF	California Zephyr	726	778	DSR	283	FTI	191	1027
	Carl Sandburg / Illinois Zephyr	818	778	DSR	347	FTI	219	257
	Cascades	1661	1360	FTI	503	DSR	387	317
	Coast Starlight	1611	1147	FTI	483	RTE	353	158
	Empire Builder	854	838	FTI	421	DSR	238	2147
	Heartland Flyer	1189	1442	DSR	814	FTI	346	236
	Pacific Surfliner	1857	1207	DCS	847	FTI	366	22
	San Joaquins	1087	1165	PTI	438	FTI	308	284
	Southwest Chief	771	776	FTI	256	DSR	198	2206
	Sunset Ltd	1121	1224	DSR	473	FTI	416	190
Texas Eagle	2232	1650	DSR	1657	FTI	489	116	
CN-IC	Blue Water	539	603	FTI	354	DSR	96	159
	City Of New Orleans	859	835	FTI	289	DSR	186	930
	Illini / Saluki	844	765	DSR	304	FTI	257	304
	Lincoln Service	2258	1700	FTI	1603	DSR	313	35
	Lincoln / Missouri	2449	2299	FTI	1623	DSR	437	35
	Texas Eagle	2177	1748	FTI	1584	DCS	369	35
	Wolverine	1257	1422	DSR	731	FTI	342	27
CPKC	Adirondack	3517	939	DSR	1621	PTI	1000	178
	Borealis	975	997	PTI	273	FTI	264	376
	Empire Builder	1060	716	FTI	365	PTI	283	384
	Ethan Allen Express	1675	1969	DSR	1071	DCS	249	60
	Hiawatha	314	309	DSR	111	DCS	66	53
CSX	Auto Train	1236	1245	FTI	364	DSR	356	898
	Capitol Ltd	694	714	FTI	264	RTE	216	307
	Cardinal	848	765	FTI	396	DSR	249	703
	Carolinian	1654	1645	PTI	597	FTI	310	295
	Downeaster	973	624	PTI	475	DCS	212	107
	Lake Shore Ltd	730	726	FTI	224	RTE	160	741
	Maple Leaf	935	781	FTI	417	DSR	246	298
	New York - Niagara Falls	1008	673	FTI	405	DSR	276	296
	Palmetto	1016	1013	FTI	356	PTI	253	659
	Pere Marquette	158	233	DSR	89	DCS	41	135
	Richmond / Newport News / Norfolk	1863	1437	DSR	436	FTI	403	189
	Silver Meteor	1063	899	FTI	330	PTI	243	1152
Silver Star	978	978	PTI	286	DSR	245	1209	
NS	Blue Water	2061	2274	FTI	1337	RTE	236	39
	Capitol Ltd	1094	1194	FTI	637	RTE	195	481
	Cardinal	1805	1469	PTI	1210	DSR	256	79
	Carolinian	844	747	PTI	418	FTI	187	202
	Crescent	1536	1365	FTI	824	DCS	215	1141
	Lake Shore Ltd	930	1210	FTI	471	PTI	159	339
	Pennsylvanian	910	855	FTI	426	RTE	207	249
	Pere Marquette	1645	1751	FTI	840	PTI	304	39
	Piedmont	819	817	PTI	308	FTI	210	173
	Richmond / Newport News / Norfolk	836	1047	FTI	462	RTE	142	81
	Roanoke	789	797	FTI	266	PTI	232	216
	Silver Star	665	541	DCS	300	FTI	177	28
	Wolverine	2374	2155	FTI	1488	DCS	382	39
UP	California Zephyr	1168	1209	DSR	454	FTI	341	1381
	Capitol Corridor	592	598	PTI	235	DCS	93	171
	Cascades	1621	1450	FTI	511	PTI	433	125
	Coast Starlight	1497	1412	FTI	419	DCS	389	1162
	Lincoln Service	1122	949	PTI	351	FTI	327	231
	Lincoln / Missouri	1004	810	DSR	369	FTI	248	502
	Missouri	860	748	FTI	298	DSR	245	271
	Pacific Surfliner	1255	1554	PTI	599	DCS	456	174
	San Joaquins	1182	1270	PTI	449	FTI	196	88
	Sunset Ltd	1671	1418	FTI	1015	RTE	220	1784
Texas Eagle	1815	1418	FTI	980	DSR	467	1073	

Minutes of Delay per 10K Train Miles by Host for June 2024

Host	Service	Total Host Responsible Delays		Largest Two Delay Categories - Current Month				Route Miles
		Current Month	Most Recent 12 Months	#1		#2		
Target		900	900					
Amtrak	Adirondack	367	477	PTI	130	DCS	90	100
	Blue Water	829	447	DSR	661	DCS	52	99
	Ethan Allen Express	479	312	PTI	213	DCS	92	100
	Maple Leaf	437	348	PTI	110	DCS	93	109
	New York - Albany	342	301	PTI	88	DCS	82	81
	New York - Niagara Falls	866	487	CTP	317	DCS	177	109
	Wolverine	1316	627	DSR	959	PTI	233	99
BBrRR	Cardinal	1222	1378	PTI	404	DSR	399	132
CN-Canada	Adirondack	-	7211		-		-	49
Fla DOT	Silver Meteor	1376	1106	CTI	739	DSR	436	68
	Silver Star	1009	1125	CTI	765	DSR	165	68
FR	Auto Train	5603	4888	PTI	2526	CTI	1401	16
	Silver Meteor	4358	3433	PTI	1438	DSR	1308	61
	Silver Star	2398	2374	DSR	1052	CTI	552	61
MADOT	Springfield Shuttles	874	815	DSR	664	DCS	185	36
	Vermonters	377	1435	PTI	172	DCS	131	50
MBTA	Downeaster	1348	1207	DCS	844	CTI	287	38
Metra	Borealis	1446	1276	CTI	764	DSR	251	33
	Empire Builder	2390	2359	CTI	1887	DSR	246	29
	Hiawatha	1513	2247	CTI	1005	DSR	184	29
MIDOT	Blue Water	1311	583	DCS	871	PTI	364	22
	Wolverine	913	674	PTI	366	DSR	320	134
MNRR	Acela	1593	1703	DSR	1042	CTI	343	56
	Adirondack	1367	1430	CTI	658	FTI	165	64
	Ethan Allen Express	1677	1166	CTI	1285	DSR	191	64
	Lake Shore Ltd	1358	1073	CTI	848	DSR	230	64
	Maple Leaf	851	923	CTI	338	RTE	255	64
	New York - Albany	1133	1175	CTI	787	DSR	159	64
	New York - Niagara Falls	1431	1676	CTI	1084	DSR	114	64
	Richmond / Newport News / Norfolk	1541	1920	DSR	769	CTI	541	56
	Vermonters	2586	2843	DSR	1595	CTI	619	56
NECR	Vermonters	1274	1957	DSR	1106	DCS	82	192
NMDOT	Southwest Chief	3484	3044	CTI	1875	DCS	1076	80
SCRRA	Coast Starlight	1542	1645	PTI	870	CTI	334	48
	Pacific Surfliner	840	1035	PTI	319	CTI	274	95
SDNRR	Pacific Surfliner	963	934	CTI	458	PTI	268	60
Sounder	Cascades	826	881	PTI	562	CTI	175	20
	Coast Starlight	2052	1872	PTI	1405	CTI	552	20
TRE	Texas Eagle	194	632	RTE	162	DCS	26	33
VTR	Ethan Allen Express	1311	417	DSR	1199	DMW	58	91

The numbers included in this document are preliminary and are for informational purposes only.

Excludes hosts with fewer than 15 route miles.

Delays on the Amtrak-owned portion of the Northeast Corridor are shown in a separate report, with tighter delay standards.

Northeast Regional: Roanoke includes all trains between Roanoke and points on the NEC; Richmond / Newport News / Norfolk includes all trains between these locations and points on the NEC.

Minutes of Delay per 10K Train Miles by Service for June 2024

Service		Host	Total Host Responsible Delays		Largest Two Delay Categories - Current Month				Route Miles
			Current	Most	#1	#2			
Target			900	900					
Acela									
Acela		MNRR	1593	1703	DSR	1042	CTI	343	56
All Other NEC Corridor Routes									
Northeast Regional	Richmond / Newport News / Norfolk	CSX	1863	1437	DSR	436	FTI	403	189
		NS	836	1047	FTI	462	RTE	142	81
		MNRR	1541	1920	DSR	769	CTI	541	56
	Roanoke	NS	789	797	FTI	266	PTI	232	216
	Springfield Shuttles	MADOT	874	815	DSR	664	DCS	185	36
Non-NEC Corridor Routes									
Borealis		CPKC	975	997	PTI	273	FTI	264	376
		Metra	1446	1276	CTI	764	DSR	251	33
Capitol Corridor		UP	592	598	PTI	235	DCS	93	171
Carolinian		CSX	1654	1645	PTI	597	FTI	310	295
		NS	844	747	PTI	418	FTI	187	202
Cascades		BNSF	1661	1360	FTI	503	DSR	387	317
		UP	1621	1450	FTI	511	PTI	433	125
		Sounder	826	881	PTI	562	CTI	175	20
Downeaster		CSX	973	624	PTI	475	DCS	212	107
		MBTA	1348	1207	DCS	844	CTI	287	38
Empire	Adirondack	CPKC	3517	939	DSR	1621	PTI	1000	178
		Amtrak	367	477	PTI	130	DCS	90	100
		CN-Canada	-	7211	-	-	-	-	49
		MNRR	1367	1430	CTI	658	FTI	165	64
	Ethan Allen Express	CPKC	1675	1969	DSR	1071	DCS	249	60
		Amtrak	479	312	PTI	213	DCS	92	100
		MNRR	1677	1166	CTI	1285	DSR	191	64
		VTR	1311	417	DSR	1199	DMW	58	91
	Maple Leaf	CSX	935	781	FTI	417	DSR	246	298
		Amtrak	437	348	PTI	110	DCS	93	109
		MNRR	851	923	CTI	338	RTE	255	64
	New York - Albany	Amtrak	342	301	PTI	88	DCS	82	81
		MNRR	1133	1175	CTI	787	DSR	159	64
	New York - Niagara Falls	CSX	1008	673	FTI	405	DSR	276	296
		Amtrak	866	487	CTP	317	DCS	177	109
		MNRR	1431	1676	CTI	1084	DSR	114	64
Heartland Flyer		BNSF	1189	1442	DSR	814	FTI	346	236
Hiawatha		CPKC	314	309	DSR	111	DCS	66	53
		Metra	1513	2247	CTI	1005	DSR	184	29
Illinois	Carl Sandburg / Illinois Zephyr	BNSF	818	778	DSR	347	FTI	219	257
	Illini / Saluki	CN-IC	844	765	DSR	304	FTI	257	304
	Lincoln Service	CN-IC	2258	1700	FTI	1603	DSR	313	35
		UP	1122	949	PTI	351	FTI	327	231
Lincoln / Missouri		CN-IC	2449	2299	FTI	1623	DSR	437	35
		UP	1004	810	DSR	369	FTI	248	502
Michigan	Blue Water	CN-IC	539	603	FTI	354	DSR	96	159
		NS	2061	2274	FTI	1337	RTE	236	39
		Amtrak	829	447	DSR	661	DCS	52	99
		MIDOT	1311	583	DCS	871	PTI	364	22
	Pere Marquette	CSX	158	233	DSR	89	DCS	41	135
		NS	1645	1751	FTI	840	PTI	304	39
	Wolverine	CN-IC	1257	1422	DSR	731	FTI	342	27
		NS	2374	2155	FTI	1488	DCS	382	39
		Amtrak	1316	627	DSR	959	PTI	233	99
		MIDOT	913	674	PTI	366	DSR	320	134
Missouri		UP	860	748	FTI	298	DSR	245	271
Pacific Surfliner		BNSF	1857	1207	DCS	847	FTI	366	22
		UP	1255	1554	PTI	599	DCS	456	174
		SCRRA	840	1035	PTI	319	CTI	274	95
		SDNRR	963	934	CTI	458	PTI	268	60
Pennsylvanian		NS	910	855	FTI	426	RTE	207	249
Piedmont		NS	819	817	PTI	308	FTI	210	173
San Joaquins		BNSF	1087	1165	PTI	438	FTI	308	284
		UP	1182	1270	PTI	449	FTI	196	88
Vermont		MADOT	377	1435	PTI	172	DCS	131	50
		MNRR	2586	2843	DSR	1595	CTI	619	56
		NECR	1274	1957	DSR	1106	DCS	82	192

Minutes of Delay per 10K Train Miles by Service for June 2024

Service	Host	Total Host Responsible Delays		Largest Two Delay Categories - Current Month				Route Miles
		Current	Most	#1		#2		
Target		900	900					
Long-Distance Routes								
Auto Train	CSX	1236	1245	FTI	364	DSR	356	898
	FR	5603	4888	PTI	2526	CTI	1401	16
California Zephyr	BNSF	726	778	DSR	283	FTI	191	1027
	UP	1168	1209	DSR	454	FTI	341	1381
Capitol Ltd	CSX	694	714	FTI	264	RTE	216	307
	NS	1094	1194	FTI	637	RTE	195	481
Cardinal	CSX	848	765	FTI	396	DSR	249	703
	NS	1805	1469	PTI	1210	DSR	256	79
	BBrRR	1222	1378	PTI	404	DSR	399	132
City Of New Orleans	CN-IC	859	835	FTI	289	DSR	186	930
Coast Starlight	BNSF	1611	1147	FTI	483	RTE	353	158
	UP	1497	1412	FTI	419	DCS	389	1162
	SCRRA	1542	1645	PTI	870	CTI	334	48
	Sounder	2052	1872	PTI	1405	CTI	552	20
Crescent	NS	1536	1365	FTI	824	DCS	215	1141
Empire Builder	BNSF	854	838	FTI	421	DSR	238	2147
	CPKC	1060	716	FTI	365	PTI	283	384
	Metra	2390	2359	CTI	1887	DSR	246	29
Lake Shore Ltd	CSX	730	726	FTI	224	RTE	160	741
	NS	930	1210	FTI	471	PTI	159	339
	MNRR	1358	1073	CTI	848	DSR	230	64
Palmetto	CSX	1016	1013	FTI	356	PTI	253	659
Silver Meteor	CSX	1063	899	FTI	330	PTI	243	1152
	Fla DOT	1376	1106	CTI	739	DSR	436	68
	FR	4358	3433	PTI	1438	DSR	1308	61
Silver Star	CSX	978	978	PTI	286	DSR	245	1209
	NS	665	541	DCS	300	FTI	177	28
	Fla DOT	1009	1125	CTI	765	DSR	165	68
	FR	2398	2374	DSR	1052	CTI	552	61
Southwest Chief	BNSF	771	776	FTI	256	DSR	198	2206
	NMDOT	3484	3044	CTI	1875	DCS	1076	80
Sunset Ltd	BNSF	1121	1224	DSR	473	FTI	416	190
	UP	1671	1418	FTI	1015	RTE	220	1784
Texas Eagle	BNSF	2232	1650	DSR	1657	FTI	489	116
	CN-IC	2177	1748	FTI	1584	DCS	369	35
	UP	1815	1418	FTI	980	DSR	467	1073
	TRE	194	632	RTE	162	DCS	26	33

The numbers included in this document are preliminary and are for informational purposes only.

Excludes hosts with fewer than 15 route miles.

Delays on the Amtrak-owned portion of the Northeast Corridor are shown in a separate report, with tighter delay standards.

Northeast Regional: Roanoke includes all trains between Roanoke and points on the NEC; Richmond / Newport News /

Norfolk includes all trains between these locations and points on the NEC.

Host Railroad Report - All-Stations and Customer OTP for June 2024

Service	All-Stations OTP		Customer OTP		Avg Mins Late per Late Rider**	
	Current Month	Most Recent 12 Months	Current Month	Most Recent 12 Months	Current Month	Most Recent 12 Months
Amtrak System	69.8%	75.7%	66.4%	75.1%	58	55
NEC Corridor Routes	75.1%	82.8%	69.3%	79.1%	46	44
Minimum Standard			80.0%	80.0%		
Acela*	74.6%	82.5%	68.3%	79.4%	38	35
Keystone	90.0%	94.0%	86.8%	92.8%	35	38
Northeast Regional	70.6%	79.0%	66.2%	76.1%	50	47
On Spine Northeast Regional	75.9%	84.3%	71.9%	82.2%	45	45
Richmond / Newport News / Norfolk	60.2%	71.6%	55.9%	68.3%	56	48
Roanoke	70.1%	74.3%	65.0%	70.9%	43	53
Springfield Shuttles	81.8%	86.6%	83.2%	86.6%	42	37
Non-NEC Corridor Routes	77.4%	79.5%	71.0%	76.1%	48	46
Minimum Standard			80.0%	80.0%		
Borealis	61.9%	61.5%	45.0%	46.5%	47	44
Capitol Corridor	91.0%	91.0%	88.8%	88.0%	35	39
Carolinian	31.1%	56.9%	23.9%	54.6%	88	61
Cascades	60.5%	66.9%	47.6%	60.9%	46	46
Downeaster	82.4%	88.8%	70.2%	80.5%	39	39
Empire	77.0%	77.9%	75.3%	78.9%	46	44
Adirondack	88.7%	67.4%	79.6%	71.9%	30	38
Berkshire Flyer	61.5%	50.6%	51.1%	48.5%	34	64
Ethan Allen Express	59.2%	73.5%	45.0%	69.6%	41	43
Maple Leaf	66.7%	72.2%	70.6%	73.5%	48	49
New York - Albany	88.8%	87.7%	85.7%	86.4%	41	40
New York - Niagara Falls	72.7%	77.1%	69.5%	74.3%	57	46
Heartland Flyer	72.1%	73.6%	74.6%	72.8%	47	42
Hiawatha	90.7%	89.2%	85.6%	85.2%	38	33
Illinois	77.9%	80.4%	69.6%	78.5%	53	52
Carl Sandburg / Illinois Zephyr	83.8%	83.1%	83.5%	82.6%	60	44
Illini / Saluki	81.3%	82.8%	76.4%	83.5%	54	62
Lincoln Service	71.0%	76.5%	60.7%	73.8%	51	49
Lincoln / Missouri	50.3%	64.5%	46.6%	63.4%	39	49
Michigan	58.1%	73.5%	59.2%	70.8%	37	46
Blue Water	74.7%	77.7%	68.2%	70.9%	32	45
Pere Marquette	88.3%	88.5%	86.9%	84.8%	38	38
Wolverine	49.5%	70.2%	48.7%	67.8%	39	47
Missouri	76.8%	80.6%	76.4%	82.9%	33	51
Pacific Surfliner	88.3%	82.9%	86.2%	82.7%	47	46
Pennsylvanian	62.3%	73.6%	60.8%	74.3%	40	44
Piedmont	84.0%	82.0%	75.2%	73.1%	37	44
San Joaquins	76.6%	75.4%	73.0%	71.4%	44	45
Vermonteer	67.1%	59.7%	66.5%	65.8%	46	51
Long-Distance Routes	41.1%	53.3%	43.6%	56.9%	94	89
Minimum Standard			80.0%	80.0%		
Auto Train	76.7%	76.4%	60.6%	60.7%	70	81
California Zephyr	42.1%	39.7%	43.2%	43.2%	73	118
Capitol Ltd	58.7%	64.3%	66.1%	69.9%	56	64
Cardinal	46.0%	55.8%	48.1%	56.9%	72	77
City Of New Orleans	60.8%	64.7%	74.9%	76.3%	72	82
Coast Starlight	54.5%	55.3%	54.9%	59.3%	84	81
Crescent	35.8%	54.7%	33.8%	58.2%	87	78
Empire Builder	34.4%	54.4%	34.8%	56.7%	124	109
Lake Shore Ltd	74.3%	70.5%	75.3%	70.6%	48	68
Palmetto	41.2%	66.5%	32.2%	66.7%	65	56
Silver Meteor	28.6%	51.9%	22.5%	48.6%	99	79
Silver Star	29.6%	45.9%	24.7%	43.3%	86	79
Southwest Chief	25.1%	34.9%	21.3%	33.3%	160	120
Sunset Ltd	36.4%	45.2%	42.0%	53.0%	100	116
Texas Eagle	32.3%	55.9%	38.6%	61.2%	128	91

The numbers included in this document are preliminary and are for informational purposes only.

Northeast Regional: Roanoke includes all trains between Roanoke and points on the NEC; Richmond/Newport News/Norfolk includes all trains between these locations and points on the NEC.

* Acela on-time performance target is 90.0%

** Excludes on-time Customers



Host Railroad Responsible Delays

Code	Code Description	Explanation
CTI	Commuter Train Interference	Delays for meeting or following commuter trains
DCS	Signal Delays	Signal failure or All Other signal delays, wayside defect-detector false-alarms, defective road crossing protection, efficiency tests, drawbridge stuck open
DMW	Maintenance of Way	Maintenance of Way delays including holds for track repairs or MW foreman to clear
DSR	Slow Order Delays	Temporary slow orders, except heat or cold orders
DTR	Detour	Delays from detours
FTI	Freight Train Interference	Delays from freight trains
PTI	Passenger Train Interference	Delays for meeting or following All Other passenger trains
RTE	Routing	Routing-dispatching delays including diversions, late track bulletins, etc.

Amtrak Responsible Delays

Code	Code Description	Explanation
ADA	Passenger Related	All delays related to disabled passengers, wheel chair lifts, guide dogs, etc.
CAR	Car Failure	Mechanical failure on all types of cars
CCR	Cab Car Failure	Mechanical failure on Cab Cars
CON	Hold for Connection	Holding for connections from All Other trains or buses.
ENG	Locomotive Failure	Mechanical failure on engines.
HLD	Passenger Related	All delays related to passengers, checked-baggage, large groups, etc.
INJ	Injury Delay	Delay due to injured passengers or employees.
ITI	Initial Terminal Delay	Delay at initial terminal due to late arriving inbound trains causing late release of equipment.
OTH	Miscellaneous Delays	Lost-on-run, heavy trains, unable to make normal speed, etc.
SVS	Servicing	All switching and servicing delays
SYS	Crew & System	Delays related to crews including lateness, lone-engineer delays

Third-Party Delays

Code	Code Description	Explanation
CUI	Customs	U.S. and Canadian customs delays; Immigration-related delays
DBS	Debris	Debris strikes
MBO	Drawbridge Openings	Movable bridge openings for marine traffic where no bridge failure is involved
NOD	Unused Recovery Time	Wait for departure time
POL	Police-Related	Police/fire department holds on right-of-way or on-board trains
TRS	Trespassers	Trespasser incidents including road crossing accidents, trespasser / animal strikes, vehicle stuck on track ahead, bridge strikes
WTR	Weather-Related	All weather-related delays including floods/washouts, earthquake-related delays, heat or cold orders, slippery rail due to leaves

*These delay codes are applicable to Off-NEC routes only.