



# Host Railroad Report

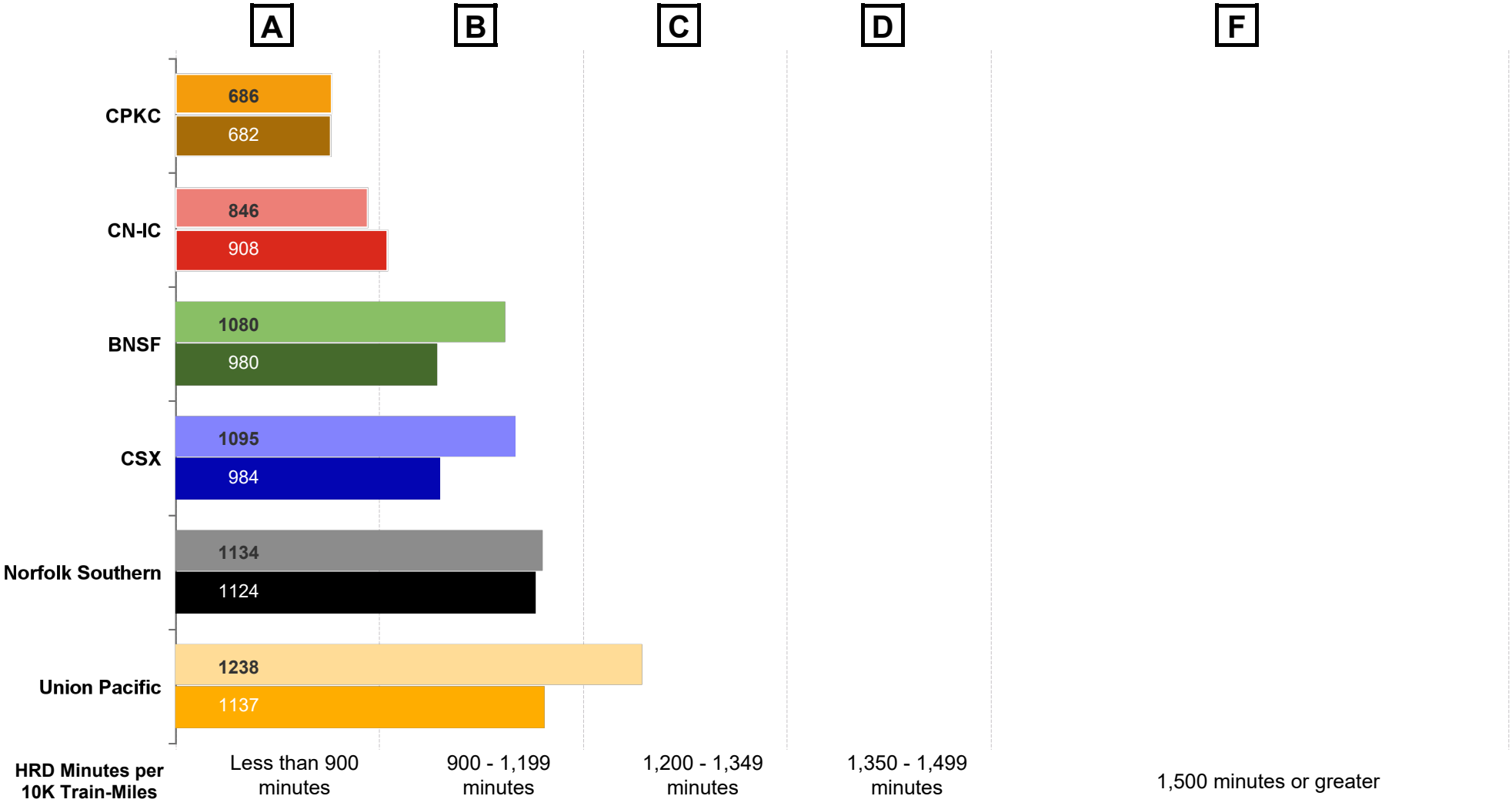
Amtrak Train Performance on Host Railroads

Data through July 2024

# Host Railroad Report Card Update

## Current Month and 1 Year Snapshot

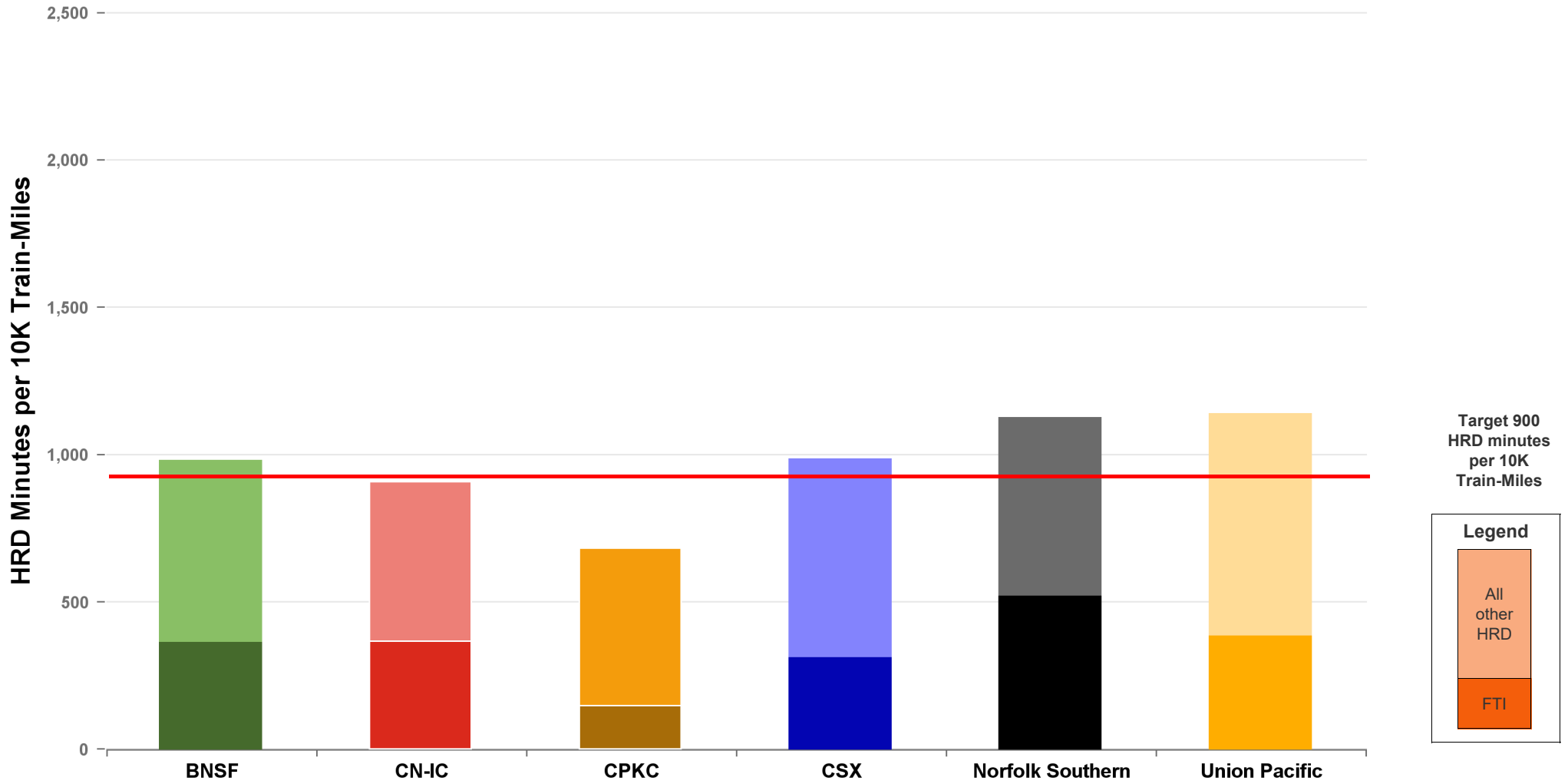
A monthly update of the Host Railroad Report Card, which grades the six major host railroads based on host responsible delay (HRD) minutes per 10,000 train-miles for the current month (lighter shade) and the most recent 12 months.



# Total Host-Responsible Delays

## 1 Year Snapshot

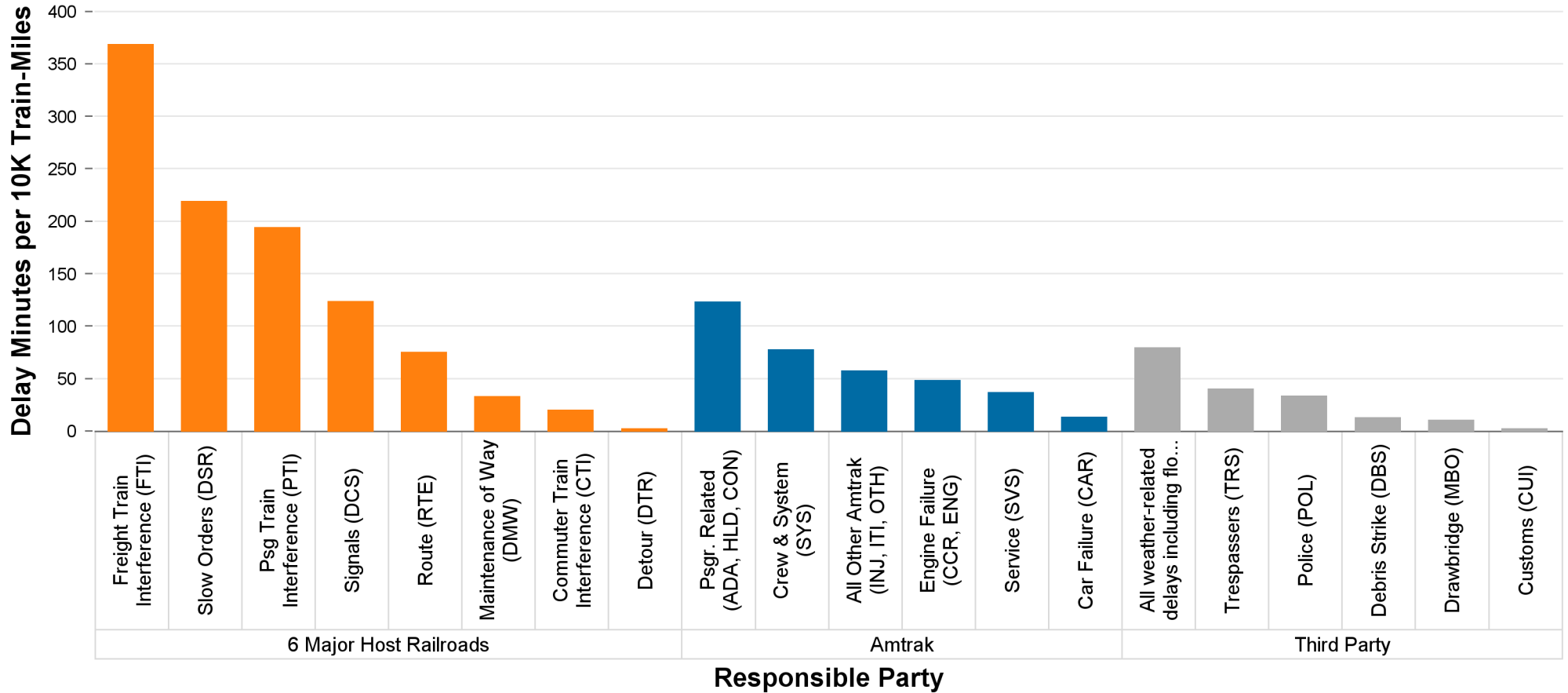
Total host-responsible delay (HRD) minutes per 10,000 train-miles incurred by Amtrak trains on the six major host railroads, with delays attributable to freight train interference (FTI) shaded.



# Delays to Amtrak Trains by Responsible Party

## 1 Year Snapshot

Delay minutes per 10,000 train-miles on the six major host railroads categorized by delay type and responsible party.

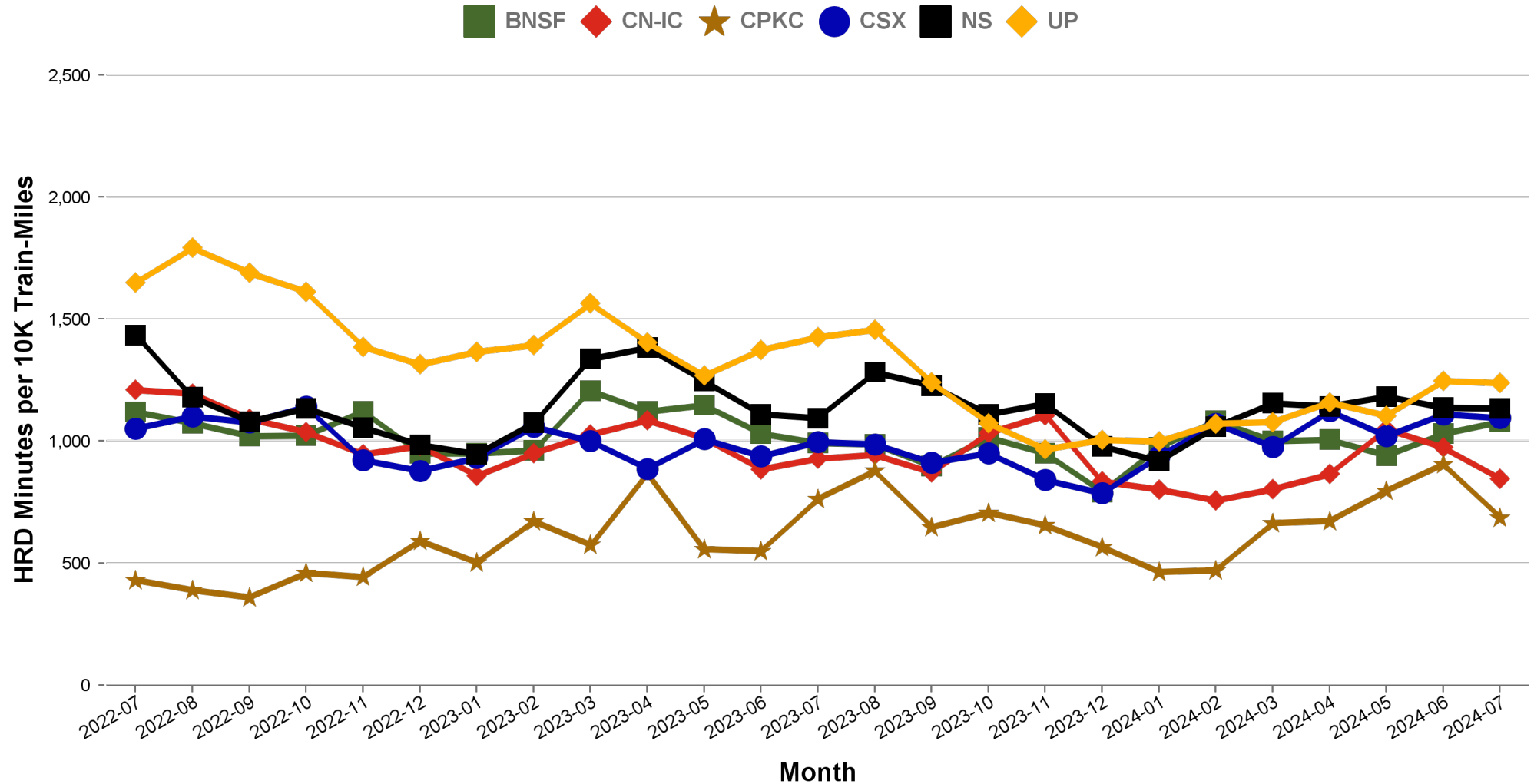


Responsible Party	6 Major Host Railroads	Amtrak	Third Party
Delay Minutes per 10K Train-Miles	1026	347	168
Percentage of Total Delays	66.5%	22.5%	10.9%

# Total Host-Responsible Delays

## 2 Year Snapshot

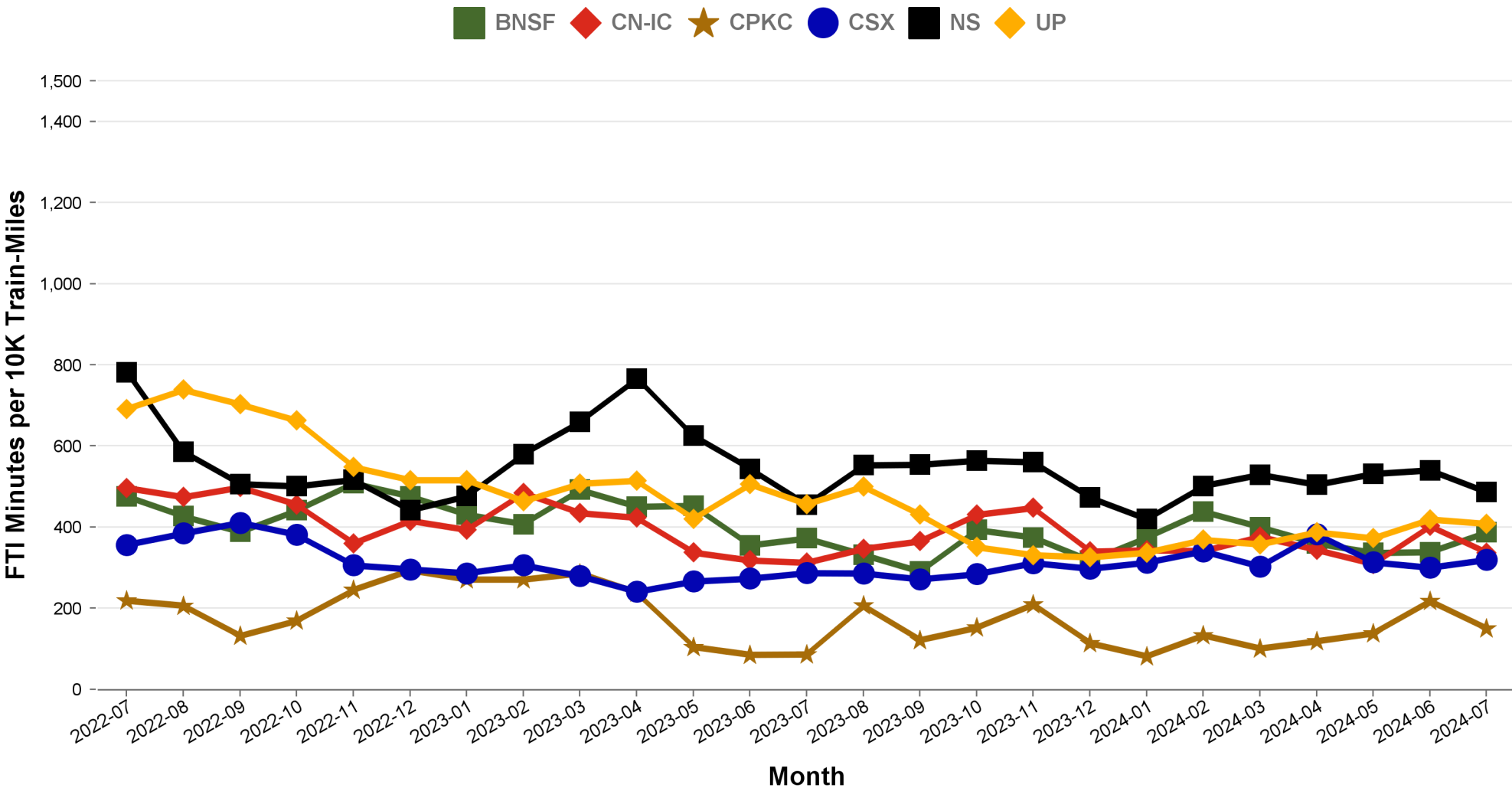
Total host-responsible delay (HRD) minutes per 10,000 train-miles incurred by Amtrak trains on each of the six major host railroads for the most recent two years.



# Freight Train Interference Delays

## 2 Year Snapshot

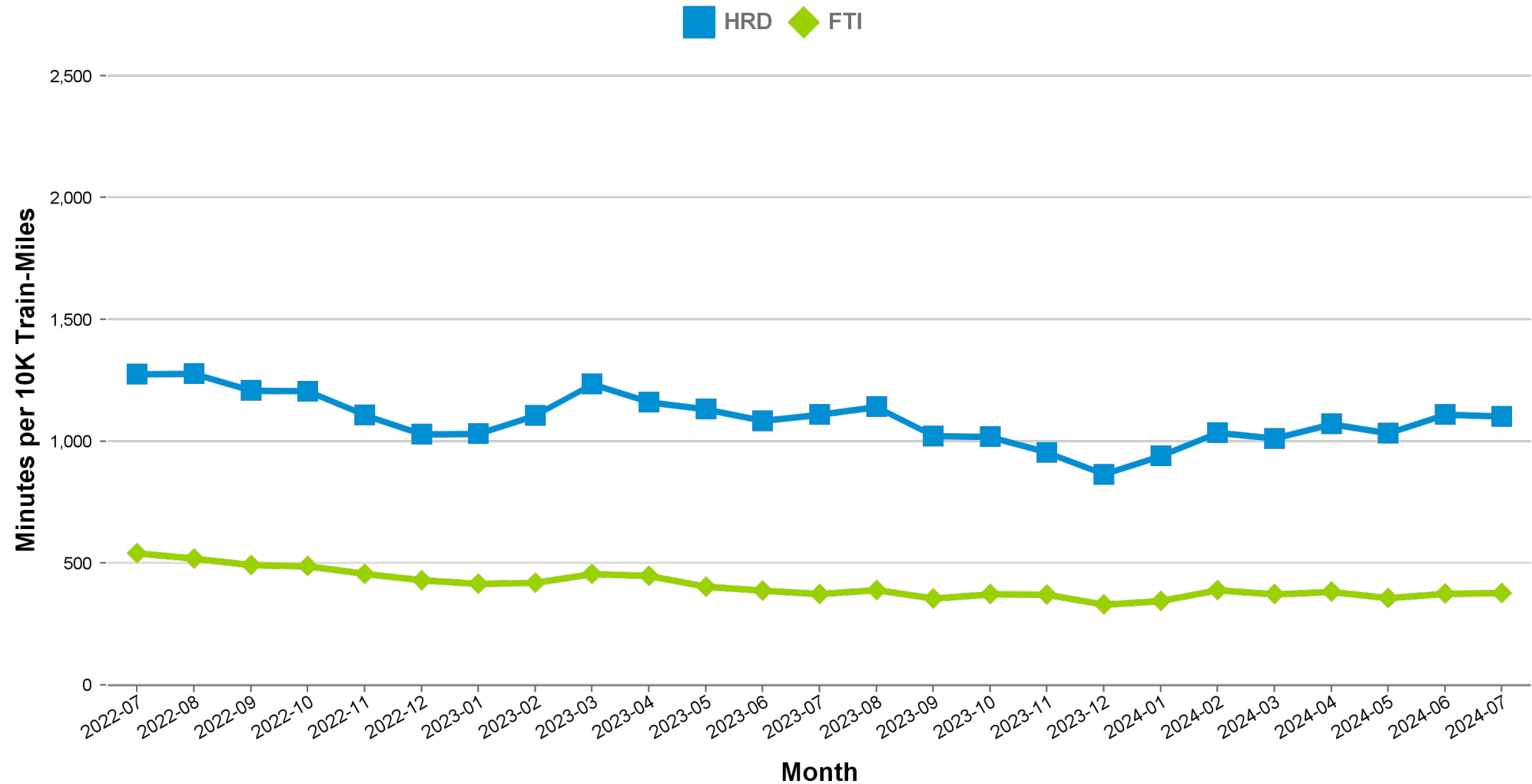
Total delay minutes per 10,000 train-miles attributable to freight train interference (FTI) incurred by Amtrak trains on each of the six major host railroads for the most recent two years.



# Aggregated Host Railroad Performance Trend

## 2 Year Snapshot

Total host-responsible delay (HRD) and freight interference (FTI) minutes per 10,000 train-miles incurred by Amtrak trains, aggregated for the six major host railroads for the most recent two years.



# Minutes of Delay per 10K Train Miles by Host for July 2024

Host	Service	Total Host Responsible Delays		Largest Two Delay Categories - Current Month				Route Miles	
		Current Month	Most Recent 12 Months	#1		#2			
<b>Target</b>		<b>900</b>	<b>900</b>						
BNSF	California Zephyr	992	791	FTI	372	DSR	342	1027	
	Carl Sandburg / Illinois Zephyr	901	790	DSR	334	FTI	318	257	
	Cascades	1506	1409	FTI	403	DSR	379	317	
	Coast Starlight	1181	1189	RTE	391	FTI	228	158	
	Empire Builder	899	843	FTI	463	DSR	231	2147	
	Heartland Flyer	1575	1473	DSR	1023	FTI	502	236	
	Pacific Surfliner	1343	1247	DCS	531	FTI	238	22	
	San Joaquins	995	1121	PTI	432	FTI	257	284	
	Southwest Chief	967	780	FTI	414	DSR	225	2206	
	Sunset Ltd	1137	1160	DSR	467	FTI	332	190	
	Texas Eagle	2675	1794	DSR	1525	FTI	924	116	
CN-IC	Blue Water	445	563	FTI	291	DSR	115	159	
	City Of New Orleans	734	835	FTI	232	DSR	175	930	
	Illini / Saluki	678	739	DSR	269	PTI	171	304	
	Lincoln Service	2309	1793	FTI	1637	DSR	334	35	
	Lincoln / Missouri	2772	2378	FTI	1730	DSR	425	35	
	Texas Eagle	1519	1728	FTI	1288	DSR	113	35	
		Wolverine	1140	1396	DSR	746	FTI	201	27
	CPKC	Adirondack	1960	954	PTI	1266	DMW	379	178
Borealis		957	980	DSR	388	PTI	193	376	
Empire Builder		871	707	DSR	279	FTI	241	384	
Ethan Allen Express		148	1945	DMW	52	DCS	38	60	
		Hiawatha	155	271	DCS	68	FTI	37	53
CSX	Auto Train	1236	1261	FTI	412	DSR	334	898	
	Capitol Ltd	744	711	FTI	383	RTE	162	307	
	Cardinal	667	742	FTI	293	DSR	194	703	
	Carolinian	1822	1681	PTI	492	FTI	416	295	
	Downeaster	788	614	PTI	428	DCS	175	107	
	Lake Shore Ltd	804	720	FTI	294	DSR	155	741	
	Maple Leaf	1354	829	FTI	521	DSR	383	298	
	New York - Niagara Falls	1066	710	FTI	391	DSR	367	296	
	Palmetto	1065	1008	FTI	292	PTI	290	659	
	Pere Marquette	393	247	DSR	219	FTI	96	135	
	Richmond / Newport News / Norfolk	1491	1433	FTI	342	DSR	331	189	
		Silver Meteor	1035	913	FTI	382	PTI	202	1152
		Silver Star	1046	987	PTI	255	FTI	214	1209
NS	Blue Water	1762	2280	FTI	887	DSR	423	39	
	Capitol Ltd	1205	1202	FTI	569	DSR	206	481	
	Cardinal	1407	1480	PTI	787	CTI	266	79	
	Carolinian	1309	793	PTI	515	DSR	456	202	
	Crescent	1377	1360	FTI	705	DCS	203	1141	
	Lake Shore Ltd	991	1199	FTI	435	PTI	252	339	
	Pennsylvanian	784	854	FTI	319	RTE	198	249	
	Pere Marquette	1671	1791	FTI	742	DSR	348	39	
	Piedmont	904	832	DSR	298	PTI	226	173	
	Richmond / Newport News / Norfolk	852	1024	FTI	414	DCS	173	81	
	Roanoke	805	811	FTI	354	PTI	276	216	
		Silver Star	935	573	FTI	638	DCS	182	28
		Wolverine	2109	2182	FTI	1158	DSR	463	39
UP	California Zephyr	1289	1175	DSR	455	FTI	385	1381	
	Capitol Corridor	572	580	PTI	219	DCS	102	171	
	Cascades	1942	1492	FTI	653	DSR	594	125	
	Coast Starlight	1715	1422	FTI	514	DSR	435	1162	
	Lincoln Service	1035	950	FTI	348	PTI	335	231	
	Lincoln / Missouri	1132	818	FTI	439	DSR	313	502	
	Missouri	865	742	FTI	322	DSR	185	271	
	Pacific Surfliner	1159	1438	PTI	545	DCS	470	174	
	San Joaquins	1550	1271	DSR	579	PTI	492	88	
	Sunset Ltd	1172	1385	FTI	564	DCS	189	1784	
	Texas Eagle	1612	1420	FTI	915	DSR	372	1073	



# Minutes of Delay per 10K Train Miles by Host for July 2024

Host	Service	Total Host Responsible Delays		Largest Two Delay Categories - Current Month				Route Miles
		Current Month	Most Recent 12 Months	#1		#2		
<b>Target</b>		<b>900</b>	<b>900</b>					
Amtrak	Adirondack	631	492	PTI	279	DCS	138	100
	Blue Water	672	420	DSR	483	PTI	107	99
	Ethan Allen Express	396	325	RTE	173	DCS	68	100
	Maple Leaf	303	342	PTI	109	DCS	81	109
	New York - Albany	353	306	PTI	145	RTE	89	81
	New York - Niagara Falls	523	495	PTI	218	DCS	142	109
	Wolverine	869	590	DSR	500	PTI	220	99
BBrRR	Cardinal	<b>1629</b>	<b>1393</b>	FTI	550	PTI	407	132
CN-Canada	Adirondack	-	<b>7241</b>		-		-	49
Fla DOT	Silver Meteor	<b>1144</b>	<b>1103</b>	CTI	759	DSR	192	68
	Silver Star	<b>1080</b>	<b>1095</b>	CTI	851	PTI	97	68
FR	Auto Train	<b>3127</b>	<b>4975</b>	CTI	1603	DSR	1306	16
	Silver Meteor	<b>4560</b>	<b>3513</b>	CTI	1655	DSR	1489	61
	Silver Star	<b>2968</b>	<b>2441</b>	DSR	1223	CTI	852	61
MADOT	Springfield Shuttles	<b>1094</b>	829	DSR	419	DCS	239	36
	Vermonters	213	<b>1377</b>	PTI	67	FTI	62	50
MBTA	Downeaster	729	<b>1166</b>	CTI	265	DCS	200	38
Metra	Borealis	<b>1097</b>	<b>1199</b>	CTI	640	DSR	293	33
	Empire Builder	<b>2538</b>	<b>2231</b>	CTI	1805	DSR	272	29
	Hiawatha	<b>1753</b>	<b>2162</b>	CTI	1156	DSR	185	29
MIDOT	Blue Water	345	463	PTI	286	RTE	59	22
	Wolverine	<b>901</b>	702	PTI	407	DSR	352	134
MNRR	Acela	<b>1708</b>	<b>1685</b>	DSR	948	CTI	425	56
	Adirondack	<b>1170</b>	<b>1318</b>	CTI	719	DSR	228	64
	Ethan Allen Express	<b>1461</b>	<b>1130</b>	CTI	884	DSR	291	64
	Lake Shore Ltd	<b>1218</b>	<b>1008</b>	CTI	689	DSR	266	64
	Maple Leaf	<b>1099</b>	885	CTI	648	DSR	238	64
	New York - Albany	<b>1205</b>	<b>1120</b>	CTI	759	DSR	245	64
	New York - Niagara Falls	<b>1315</b>	<b>1545</b>	CTI	914	DSR	203	64
	Richmond / Newport News / Norfolk	<b>1733</b>	<b>1864</b>	DSR	925	CTI	477	56
	Vermonters	<b>2664</b>	<b>2798</b>	DSR	1342	CTI	1039	56
NECR	Vermonters	<b>1206</b>	<b>1866</b>	DSR	1032	DCS	103	192
NMDOT	Southwest Chief	<b>2538</b>	<b>3032</b>	CTI	1590	PTI	388	80
SCRRA	Coast Starlight	<b>1428</b>	<b>1659</b>	PTI	693	DCS	357	48
	Pacific Surfliner	<b>903</b>	<b>1040</b>	PTI	357	CTI	244	95
SDNRR	Pacific Surfliner	<b>1004</b>	<b>930</b>	CTI	451	PTI	259	60
Sounder	Cascades	741	887	PTI	461	CTI	145	20
	Coast Starlight	<b>2033</b>	<b>1866</b>	PTI	1517	CTI	158	20
TRE	Texas Eagle	289	526	DCS	118	CTI	98	33
VTR	Ethan Allen Express	897	460	DSR	848	DCS	31	91

The numbers included in this document are preliminary and are for informational purposes only.

Excludes hosts with fewer than 15 route miles.

Delays on the Amtrak-owned portion of the Northeast Corridor are shown in a separate report, with tighter delay standards.

Northeast Regional: Roanoke includes all trains between Roanoke and points on the NEC; Richmond / Newport News / Norfolk includes all trains between these locations and points on the NEC.

# Minutes of Delay per 10K Train Miles by Service for July 2024

Service	Host	Total Host Responsible Delays		Largest Two Delay Categories - Current Month				Route Miles	
		Current	Most	#1	#2				
<b>Target</b>		<b>900</b>	<b>900</b>						
<b>Acela</b>									
Acela	MNRR	<b>1708</b>	<b>1685</b>	DSR	948	CTI	425	56	
<b>All Other NEC Corridor Routes</b>									
Northeast Regional	Richmond / Newport News / Norfolk	CSX	<b>1491</b>	<b>1433</b>	FTI	342	DSR	331	189
		NS	852	<b>1024</b>	FTI	414	DCS	173	81
		MNRR	<b>1733</b>	<b>1864</b>	DSR	925	CTI	477	56
	Roanoke	NS	805	811	FTI	354	PTI	276	216
	Springfield Shuttles	MADOT	<b>1094</b>	829	DSR	419	DCS	239	36
<b>Non-NEC Corridor Routes</b>									
Borealis		CPKC	<b>957</b>	<b>980</b>	DSR	388	PTI	193	376
		Metra	<b>1097</b>	<b>1199</b>	CTI	640	DSR	293	33
Capitol Corridor		UP	572	580	PTI	219	DCS	102	171
Carolinian		CSX	<b>1822</b>	<b>1681</b>	PTI	492	FTI	416	295
		NS	<b>1309</b>	793	PTI	515	DSR	456	202
Cascades		BNSF	<b>1506</b>	<b>1409</b>	FTI	403	DSR	379	317
		UP	<b>1942</b>	<b>1492</b>	FTI	653	DSR	594	125
		Sounder	741	887	PTI	461	CTI	145	20
Downeaster		CSX	788	614	PTI	428	DCS	175	107
		MBTA	729	<b>1166</b>	CTI	265	DCS	200	38
Empire	Adirondack	CPKC	<b>1960</b>	<b>954</b>	PTI	1266	DMW	379	178
		Amtrak	631	492	PTI	279	DCS	138	100
		CN-Canada	-	<b>7241</b>	-	-	-	-	49
		MNRR	<b>1170</b>	<b>1318</b>	CTI	719	DSR	228	64
	Ethan Allen Express	CPKC	148	<b>1945</b>	DMW	52	DCS	38	60
		Amtrak	396	325	RTE	173	DCS	68	100
		MNRR	<b>1461</b>	<b>1130</b>	CTI	884	DSR	291	64
		VTR	897	460	DSR	848	DCS	31	91
	Maple Leaf	CSX	<b>1354</b>	829	FTI	521	DSR	383	298
		Amtrak	303	342	PTI	109	DCS	81	109
		MNRR	<b>1099</b>	885	CTI	648	DSR	238	64
	New York - Albany	Amtrak	353	306	PTI	145	RTE	89	81
		MNRR	<b>1205</b>	<b>1120</b>	CTI	759	DSR	245	64
	New York - Niagara Falls	CSX	<b>1066</b>	710	FTI	391	DSR	367	296
		Amtrak	523	495	PTI	218	DCS	142	109
		MNRR	<b>1315</b>	<b>1545</b>	CTI	914	DSR	203	64
Heartland Flyer		BNSF	<b>1575</b>	<b>1473</b>	DSR	1023	FTI	502	236
Hiawatha		CPKC	155	271	DCS	68	FTI	37	53
		Metra	<b>1753</b>	<b>2162</b>	CTI	1156	DSR	185	29
Illinois	Carl Sandburg / Illinois Zephyr	BNSF	<b>901</b>	790	DSR	334	FTI	318	257
	Illini / Saluki	CN-IC	678	739	DSR	269	PTI	171	304
	Lincoln Service	CN-IC	<b>2309</b>	<b>1793</b>	FTI	1637	DSR	334	35
		UP	<b>1035</b>	<b>950</b>	FTI	348	PTI	335	231
Lincoln / Missouri		CN-IC	<b>2772</b>	<b>2378</b>	FTI	1730	DSR	425	35
		UP	<b>1132</b>	818	FTI	439	DSR	313	502
Michigan	Blue Water	CN-IC	445	563	FTI	291	DSR	115	159
		NS	<b>1762</b>	<b>2280</b>	FTI	887	DSR	423	39
		Amtrak	672	420	DSR	483	PTI	107	99
		MIDOT	345	463	PTI	286	RTE	59	22
	Pere Marquette	CSX	393	247	DSR	219	FTI	96	135
		NS	<b>1671</b>	<b>1791</b>	FTI	742	DSR	348	39
	Wolverine	CN-IC	<b>1140</b>	<b>1396</b>	DSR	746	FTI	201	27
		NS	<b>2109</b>	<b>2182</b>	FTI	1158	DSR	463	39
		Amtrak	869	590	DSR	500	PTI	220	99
		MIDOT	<b>901</b>	702	PTI	407	DSR	352	134
Missouri		UP	865	742	FTI	322	DSR	185	271
Pacific Surfliner		BNSF	<b>1343</b>	<b>1247</b>	DCS	531	FTI	238	22
		UP	<b>1159</b>	<b>1438</b>	PTI	545	DCS	470	174
		SCRRA	<b>903</b>	<b>1040</b>	PTI	357	CTI	244	95
		SDNRR	<b>1004</b>	<b>930</b>	CTI	451	PTI	259	60
Pennsylvanian		NS	784	854	FTI	319	RTE	198	249
Piedmont		NS	<b>904</b>	832	DSR	298	PTI	226	173
San Joaquins		BNSF	<b>995</b>	<b>1121</b>	PTI	432	FTI	257	284
		UP	<b>1550</b>	<b>1271</b>	DSR	579	PTI	492	88
Vermont		MADOT	213	<b>1377</b>	PTI	67	FTI	62	50
		MNRR	<b>2664</b>	<b>2798</b>	DSR	1342	CTI	1039	56
		NECR	<b>1206</b>	<b>1866</b>	DSR	1032	DCS	103	192

# Minutes of Delay per 10K Train Miles by Service for July 2024

Service	Host	Total Host Responsible Delays		Largest Two Delay Categories - Current Month				Route Miles
		Current	Most	#1		#2		
<b>Target</b>		<b>900</b>	<b>900</b>					
<b>Long-Distance Routes</b>								
Auto Train	CSX	1236	1261	FTI	412	DSR	334	898
	FR	3127	4975	CTI	1603	DSR	1306	16
California Zephyr	BNSF	992	791	FTI	372	DSR	342	1027
	UP	1289	1175	DSR	455	FTI	385	1381
Capitol Ltd	CSX	744	711	FTI	383	RTE	162	307
	NS	1205	1202	FTI	569	DSR	206	481
Cardinal	CSX	667	742	FTI	293	DSR	194	703
	NS	1407	1480	PTI	787	CTI	266	79
	BBrRR	1629	1393	FTI	550	PTI	407	132
City Of New Orleans	CN-IC	734	835	FTI	232	DSR	175	930
Coast Starlight	BNSF	1181	1189	RTE	391	FTI	228	158
	UP	1715	1422	FTI	514	DSR	435	1162
	SCRRA	1428	1659	PTI	693	DCS	357	48
	Sounder	2033	1866	PTI	1517	CTI	158	20
Crescent	NS	1377	1360	FTI	705	DCS	203	1141
Empire Builder	BNSF	899	843	FTI	463	DSR	231	2147
	CPKC	871	707	DSR	279	FTI	241	384
	Metra	2538	2231	CTI	1805	DSR	272	29
Lake Shore Ltd	CSX	804	720	FTI	294	DSR	155	741
	NS	991	1199	FTI	435	PTI	252	339
	MNRR	1218	1008	CTI	689	DSR	266	64
Palmetto	CSX	1065	1008	FTI	292	PTI	290	659
Silver Meteor	CSX	1035	913	FTI	382	PTI	202	1152
	Fla DOT	1144	1103	CTI	759	DSR	192	68
	FR	4560	3513	CTI	1655	DSR	1489	61
Silver Star	CSX	1046	987	PTI	255	FTI	214	1209
	NS	935	573	FTI	638	DCS	182	28
	Fla DOT	1080	1095	CTI	851	PTI	97	68
	FR	2968	2441	DSR	1223	CTI	852	61
Southwest Chief	BNSF	967	780	FTI	414	DSR	225	2206
	NMDOT	2538	3032	CTI	1590	PTI	388	80
Sunset Ltd	BNSF	1137	1160	DSR	467	FTI	332	190
	UP	1172	1385	FTI	564	DCS	189	1784
Texas Eagle	BNSF	2675	1794	DSR	1525	FTI	924	116
	CN-IC	1519	1728	FTI	1288	DSR	113	35
	UP	1612	1420	FTI	915	DSR	372	1073
	TRE	289	526	DCS	118	CTI	98	33

The numbers included in this document are preliminary and are for informational purposes only.  
 Excludes hosts with fewer than 15 route miles.  
 Delays on the Amtrak-owned portion of the Northeast Corridor are shown in a separate report, with tighter delay standards.  
 Northeast Regional: Roanoke includes all trains between Roanoke and points on the NEC; Richmond / Newport News / Norfolk includes all trains between these locations and points on the NEC.



# Host Railroad Report - All-Stations and Customer OTP for July 2024

Service	All-Stations OTP		Customer OTP		Avg Mins Late per Late Rider**	
	Current Month	Most Recent 12 Months	Current Month	Most Recent 12 Months	Current Month	Most Recent 12 Months
<b>Amtrak System</b>	<b>69.6%</b>	<b>75.8%</b>	<b>67.3%</b>	<b>75.3%</b>	<b>60</b>	<b>55</b>
<b>NEC Corridor Routes</b>	<b>75.0%</b>	<b>82.9%</b>	<b>69.9%</b>	<b>79.3%</b>	<b>46</b>	<b>44</b>
<b>Minimum Standard</b>			<b>80.0%</b>	<b>80.0%</b>		
Acela*	72.7%	82.2%	66.8%	79.1%	32	34
Keystone	90.1%	93.8%	88.9%	92.6%	39	37
Northeast Regional	70.8%	79.3%	67.0%	76.5%	51	46
On Spine Northeast Regional	76.3%	83.8%	74.7%	81.9%	50	45
Richmond / Newport News / Norfolk	60.8%	72.0%	54.1%	68.7%	53	47
Roanoke	69.4%	75.7%	64.2%	72.1%	53	52
Springfield Shuttles	80.2%	86.8%	80.8%	86.9%	38	37
<b>Non-NEC Corridor Routes</b>	<b>77.5%</b>	<b>79.7%</b>	<b>72.4%</b>	<b>76.3%</b>	<b>47</b>	<b>46</b>
<b>Minimum Standard</b>			<b>80.0%</b>	<b>80.0%</b>		
Borealis	62.2%	61.8%	43.4%	45.1%	45	45
Capitol Corridor	92.8%	91.5%	91.5%	88.9%	33	38
Carolinian	35.6%	56.3%	26.3%	53.6%	76	62
Cascades	60.6%	65.9%	49.5%	58.9%	44	46
Downeaster	84.4%	89.1%	76.0%	81.3%	33	39
Empire	77.4%	79.2%	77.1%	79.8%	46	45
Adirondack	89.1%	72.1%	83.5%	73.9%	46	39
Berkshire Flyer	68.3%	56.8%	73.7%	55.9%	56	66
Ethan Allen Express	80.8%	74.7%	76.9%	70.5%	28	43
Maple Leaf	61.8%	72.9%	62.1%	74.1%	56	49
New York - Albany	87.8%	88.7%	85.3%	87.3%	43	41
New York - Niagara Falls	68.4%	77.0%	69.8%	75.1%	47	47
Heartland Flyer	68.0%	72.5%	63.7%	70.7%	55	44
Hiawatha	91.2%	90.0%	86.2%	86.2%	35	33
Illinois	74.3%	80.2%	71.5%	78.4%	49	51
Carl Sandburg / Illinois Zephyr	74.0%	82.4%	72.4%	82.0%	52	45
Illini / Saluki	79.8%	83.3%	78.2%	84.0%	62	62
Lincoln Service	70.1%	76.1%	67.2%	73.3%	42	48
Lincoln / Missouri	52.6%	64.1%	54.4%	63.3%	51	49
Michigan	58.3%	71.9%	67.2%	70.6%	53	45
Blue Water	74.8%	78.2%	73.5%	73.0%	63	47
Pere Marquette	84.5%	88.0%	77.6%	84.0%	34	37
Wolverine	50.2%	67.8%	61.7%	66.7%	52	46
Missouri	75.1%	80.8%	79.9%	84.2%	40	46
Pacific Surfliner	88.2%	83.4%	85.4%	83.2%	34	45
Pennsylvanian	61.5%	71.8%	57.7%	72.1%	39	42
Piedmont	79.9%	81.7%	73.5%	73.0%	46	45
San Joaquins	79.7%	76.5%	76.9%	72.9%	44	45
Vermonteer	49.5%	60.3%	53.4%	65.5%	53	51
<b>Long-Distance Routes</b>	<b>40.3%</b>	<b>53.3%</b>	<b>43.9%</b>	<b>56.7%</b>	<b>107</b>	<b>89</b>
<b>Minimum Standard</b>			<b>80.0%</b>	<b>80.0%</b>		
Auto Train	82.3%	76.0%	66.0%	59.5%	76	82
California Zephyr	27.2%	40.5%	27.1%	44.2%	152	114
Capitol Ltd	50.5%	64.4%	55.7%	68.9%	76	66
Cardinal	47.7%	56.0%	53.7%	57.2%	76	71
City Of New Orleans	69.6%	65.3%	82.9%	77.2%	76	81
Coast Starlight	46.0%	55.2%	44.4%	58.7%	93	83
Crescent	43.4%	54.6%	44.2%	57.9%	77	75
Empire Builder	27.4%	53.9%	27.1%	55.2%	150	110
Lake Shore Ltd	67.9%	71.3%	70.5%	71.8%	65	68
Palmetto	49.2%	66.8%	44.5%	66.7%	57	53
Silver Meteor	31.5%	51.4%	28.3%	48.1%	106	81
Silver Star	27.5%	44.8%	22.1%	41.6%	90	79
Southwest Chief	23.6%	35.0%	22.5%	34.0%	158	119
Sunset Ltd	45.8%	46.5%	60.2%	55.4%	143	119
Texas Eagle	44.9%	55.5%	51.3%	61.0%	95	92

The numbers included in this document are preliminary and are for informational purposes only.

Northeast Regional: Roanoke includes all trains between Roanoke and points on the NEC; Richmond/Newport News/Norfolk includes all trains between these locations and points on the NEC.

\* Acela on-time performance target is 90.0%

\*\* Excludes on-time Customers



### Host Railroad Responsible Delays

Code	Code Description	Explanation
CTI	Commuter Train Interference	Delays for meeting or following commuter trains
DCS	Signal Delays	Signal failure or All Other signal delays, wayside defect-detector false-alarms, defective road crossing protection, efficiency tests, drawbridge stuck open
DMW	Maintenance of Way	Maintenance of Way delays including holds for track repairs or MW foreman to clear
DSR	Slow Order Delays	Temporary slow orders, except heat or cold orders
DTR	Detour	Delays from detours
FTI	Freight Train Interference	Delays from freight trains
PTI	Passenger Train Interference	Delays for meeting or following All Other passenger trains
RTE	Routing	Routing-dispatching delays including diversions, late track bulletins, etc.

### Amtrak Responsible Delays

Code	Code Description	Explanation
ADA	Passenger Related	All delays related to disabled passengers, wheel chair lifts, guide dogs, etc.
CAR	Car Failure	Mechanical failure on all types of cars
CCR	Cab Car Failure	Mechanical failure on Cab Cars
CON	Hold for Connection	Holding for connections from All Other trains or buses.
ENG	Locomotive Failure	Mechanical failure on engines.
HLD	Passenger Related	All delays related to passengers, checked-baggage, large groups, etc.
INJ	Injury Delay	Delay due to injured passengers or employees.
ITI	Initial Terminal Delay	Delay at initial terminal due to late arriving inbound trains causing late release of equipment.
OTH	Miscellaneous Delays	Lost-on-run, heavy trains, unable to make normal speed, etc.
SVS	Servicing	All switching and servicing delays
SYS	Crew & System	Delays related to crews including lateness, lone-engineer delays

### Third-Party Delays

Code	Code Description	Explanation
CUI	Customs	U.S. and Canadian customs delays; Immigration-related delays
DBS	Debris	Debris strikes
MBO	Drawbridge Openings	Movable bridge openings for marine traffic where no bridge failure is involved
NOD	Unused Recovery Time	Wait for departure time
POL	Police-Related	Police/fire department holds on right-of-way or on-board trains
TRS	Trespassers	Trespasser incidents including road crossing accidents, trespasser / animal strikes, vehicle stuck on track ahead, bridge strikes
WTR	Weather-Related	All weather-related delays including floods/washouts, earthquake-related delays, heat or cold orders, slippery rail due to leaves

\*These delay codes are applicable to Off-NEC routes only.