



Host Railroad Report

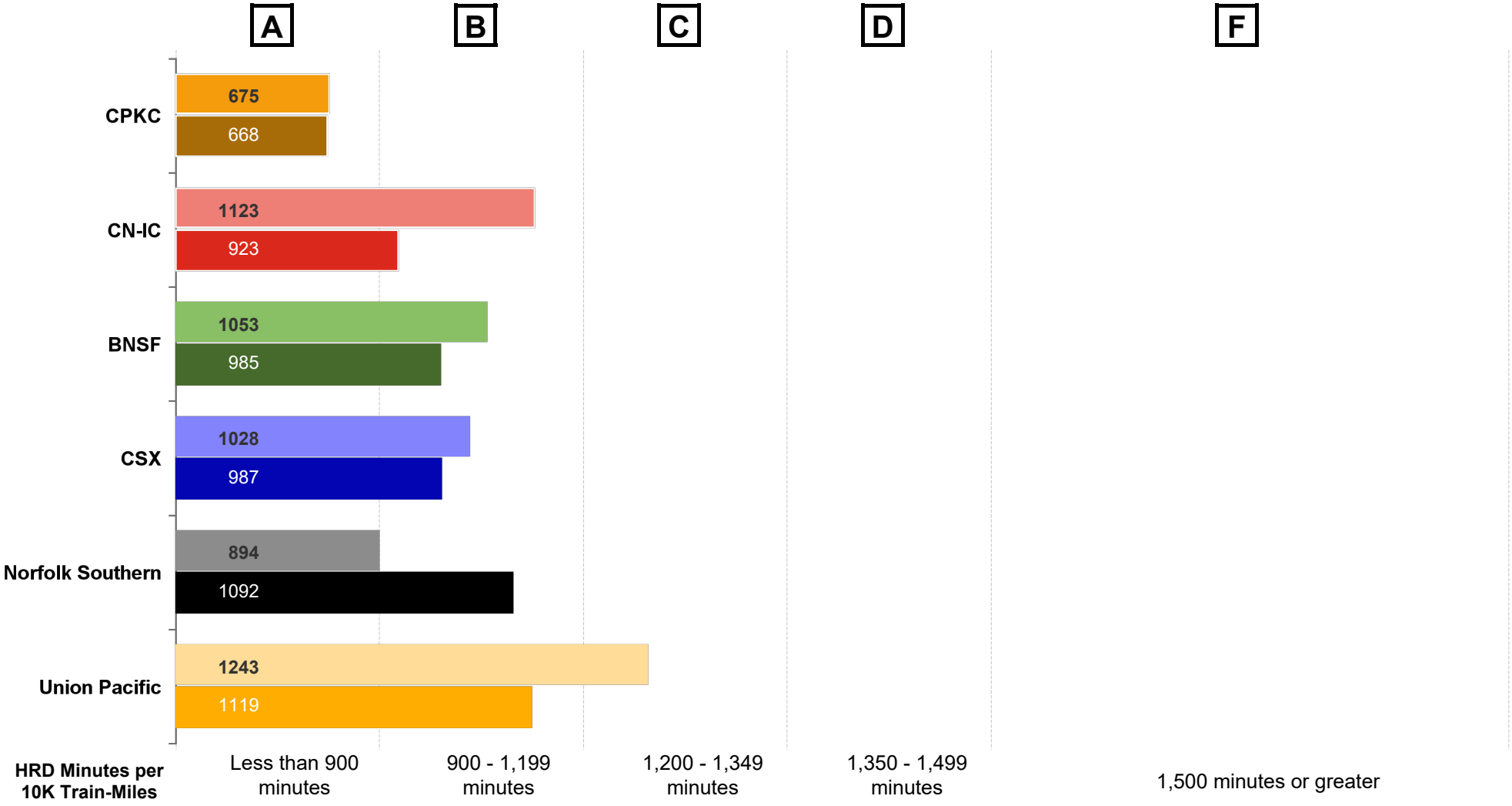
Amtrak Train Performance on Host Railroads

Data through August 2024

Host Railroad Report Card Update

Current Month and 1 Year Snapshot

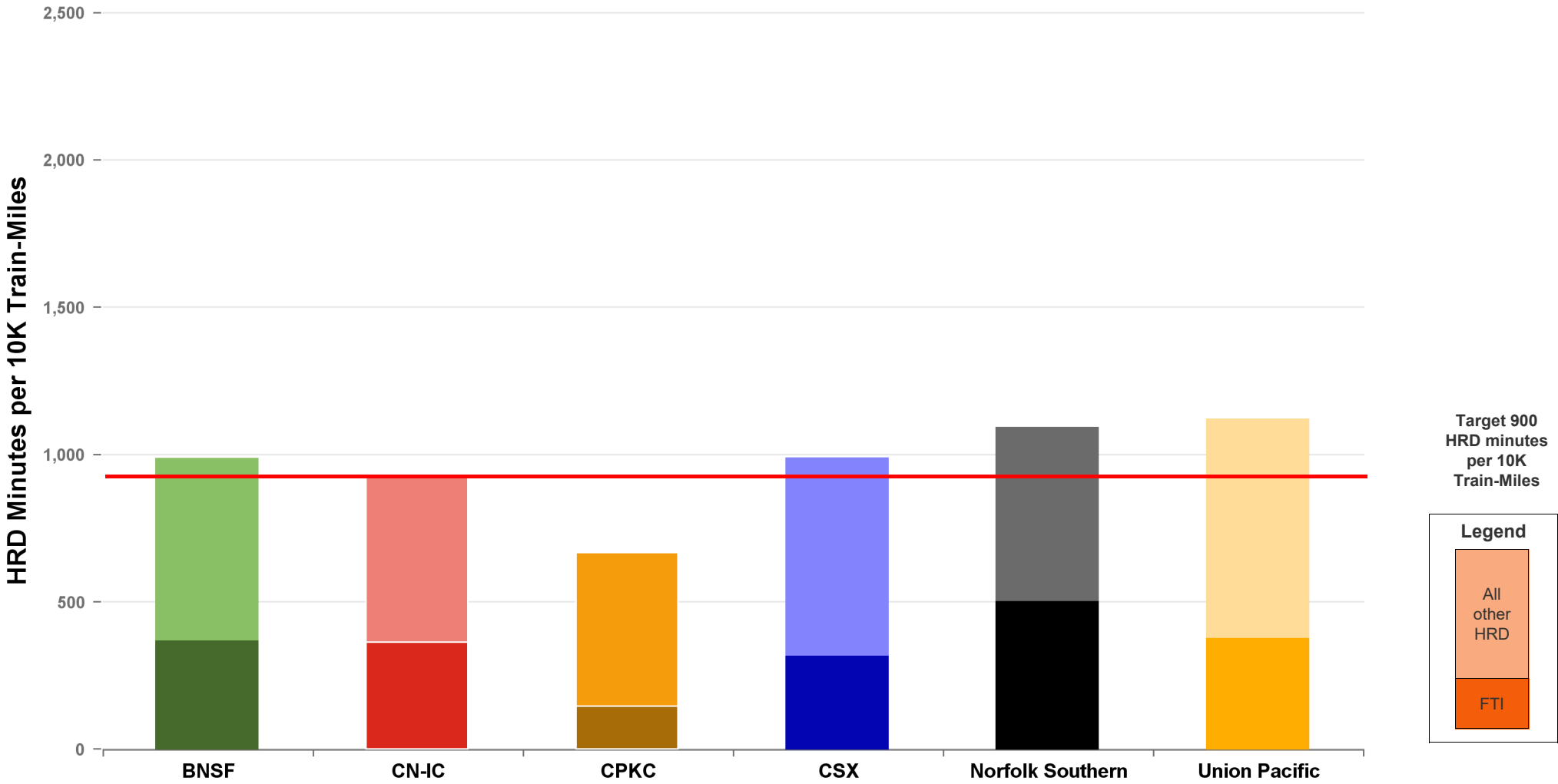
A monthly update of the Host Railroad Report Card, which grades the six major host railroads based on host responsible delay (HRD) minutes per 10,000 train-miles for the current month (lighter shade) and the most recent 12 months.



Total Host-Responsible Delays

1 Year Snapshot

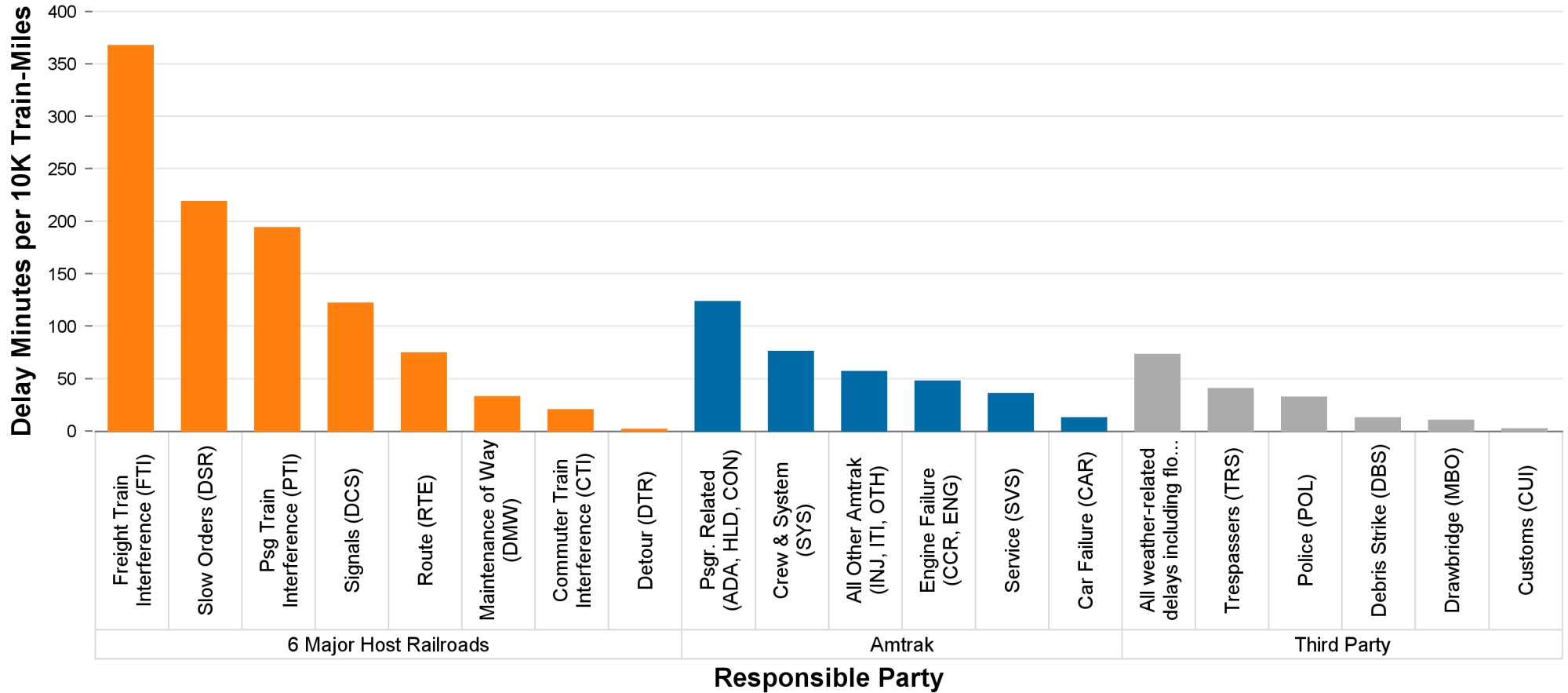
Total host-responsible delay (HRD) minutes per 10,000 train-miles incurred by Amtrak trains on the six major host railroads, with delays attributable to freight train interference (FTI) shaded.



Delays to Amtrak Trains by Responsible Party

1 Year Snapshot

Delay minutes per 10,000 train-miles on the six major host railroads categorized by delay type and responsible party.

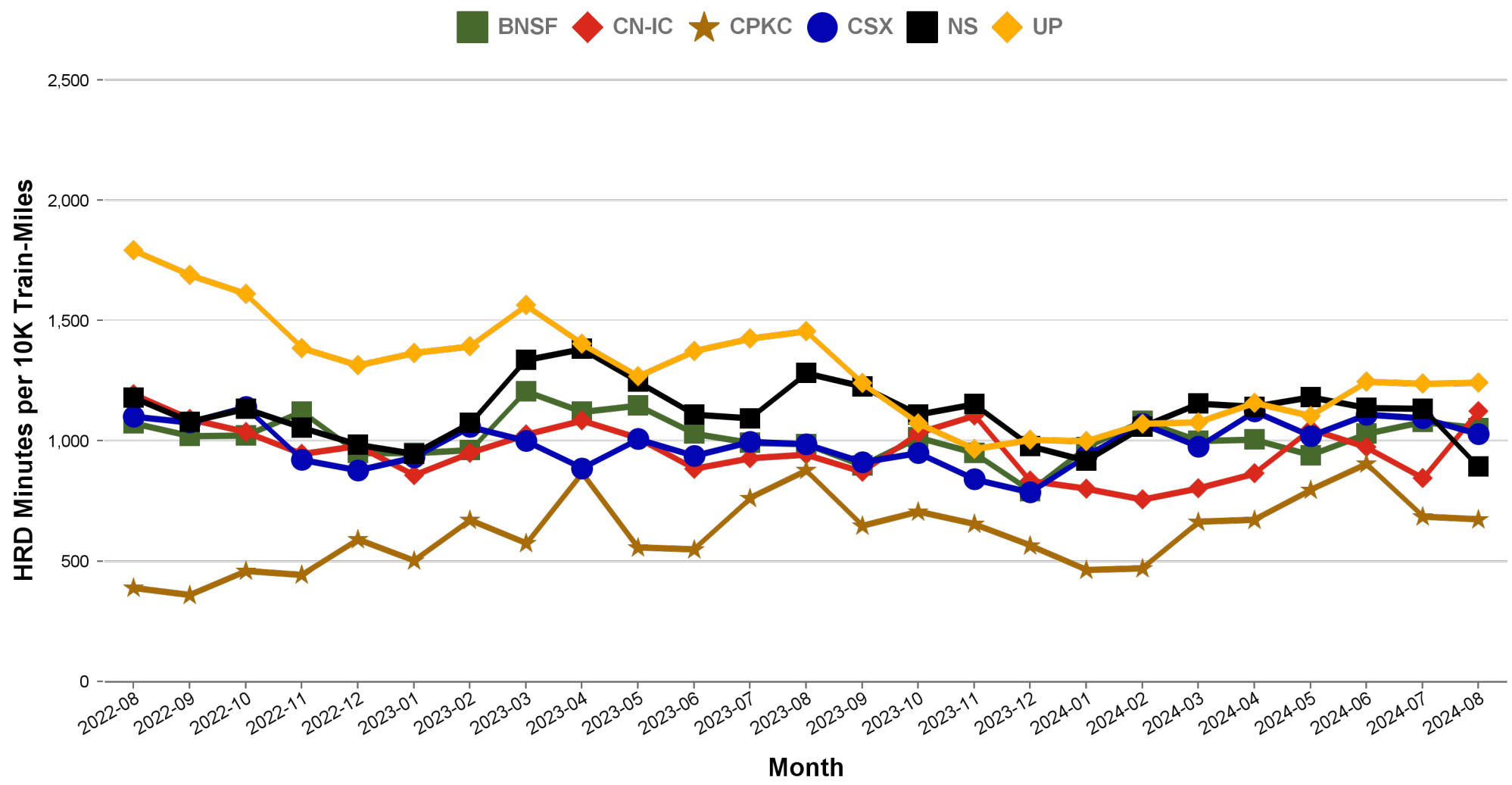


| Responsible Party | 6 Major Host Railroads | Amtrak | Third Party |
|--|------------------------|--------|-------------|
| Delay Minutes per 10K Train-Miles | 1020 | 350 | 166 |
| Percentage of Total Delays | 66.4% | 22.8% | 10.8% |

Total Host-Responsible Delays

2 Year Snapshot

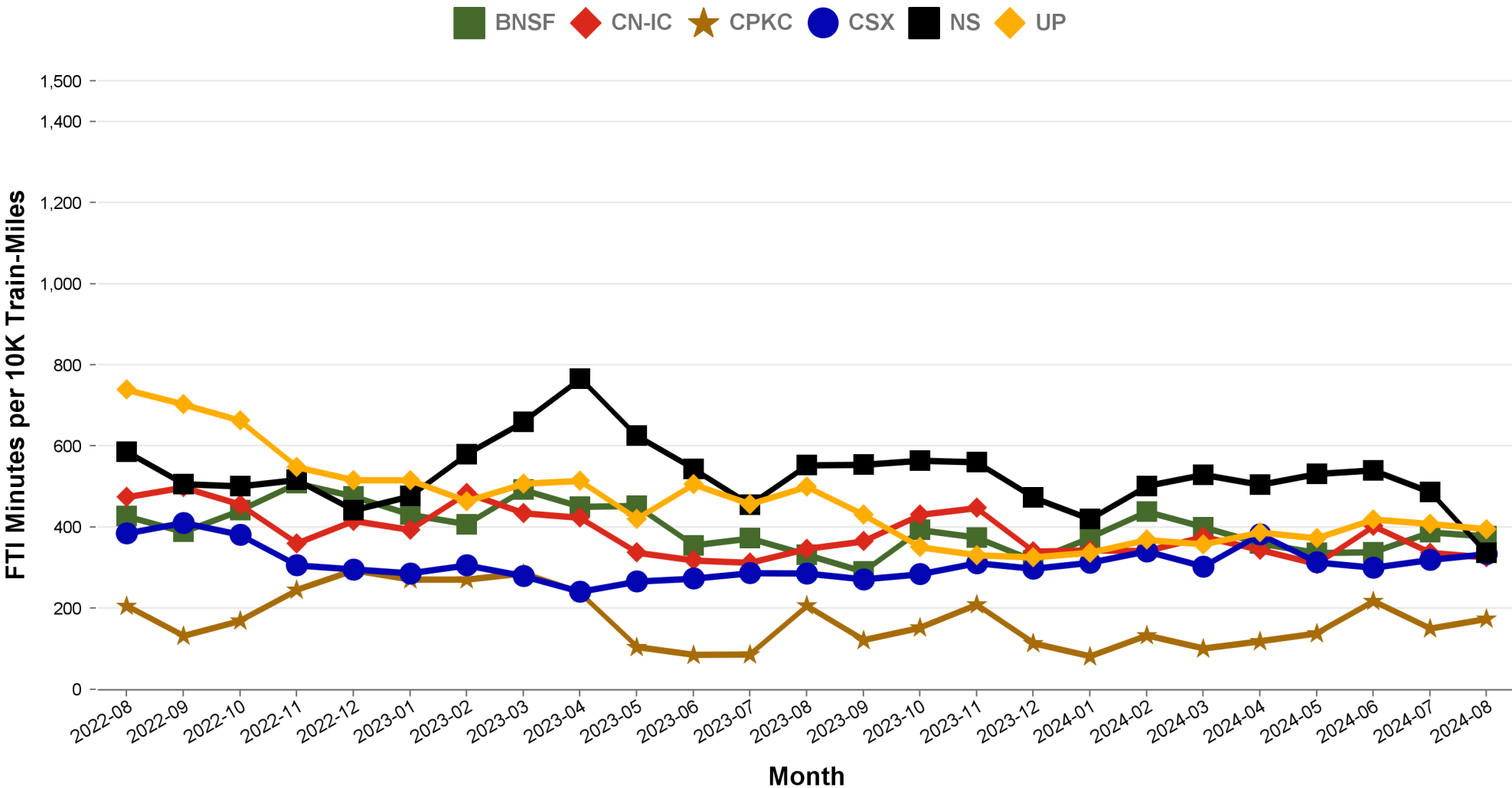
Total host-responsible delay (HRD) minutes per 10,000 train-miles incurred by Amtrak trains on each of the six major host railroads for the most recent two years.



Freight Train Interference Delays

2 Year Snapshot

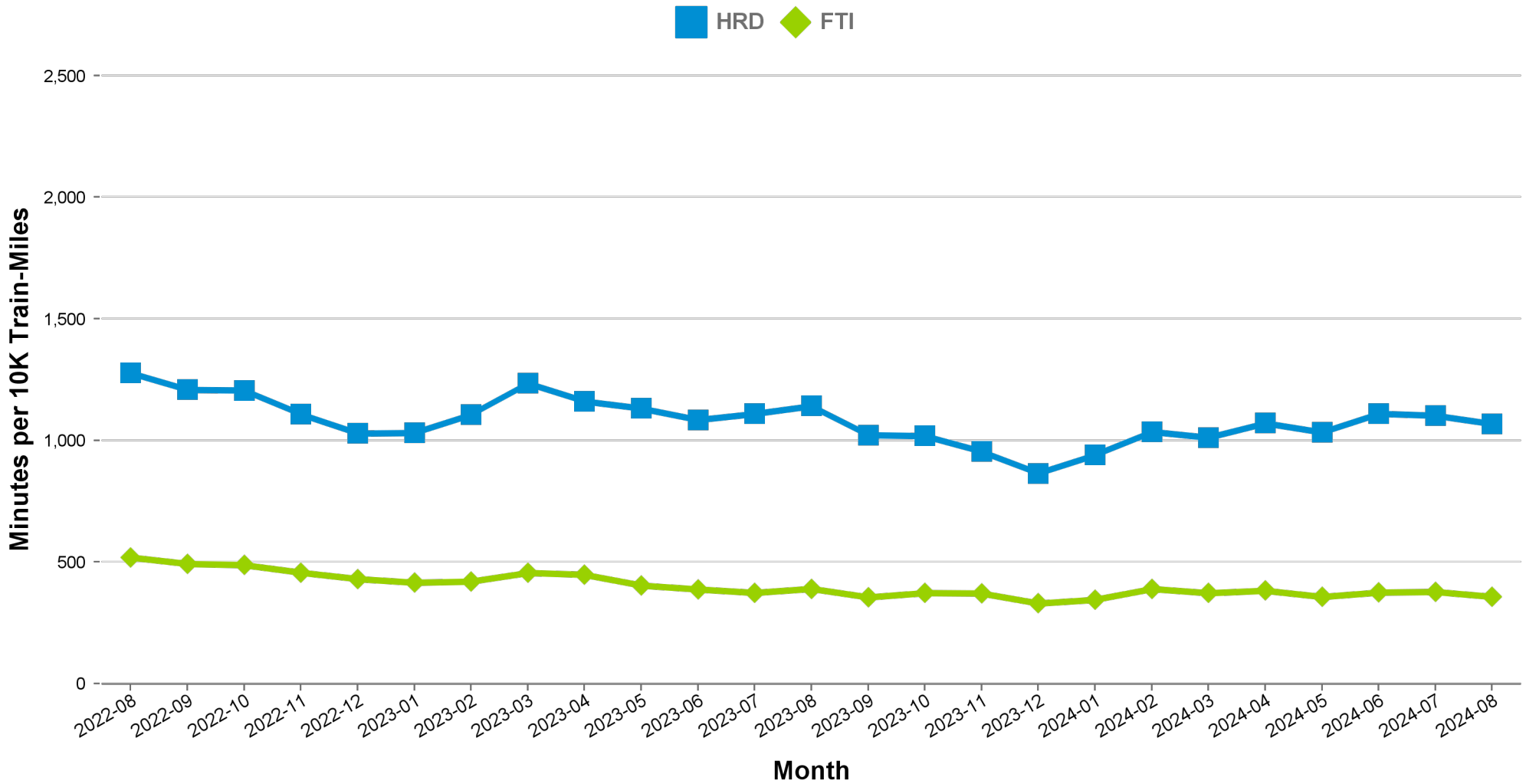
Total delay minutes per 10,000 train-miles attributable to freight train interference (FTI) incurred by Amtrak trains on each of the six major host railroads for the most recent two years.



Aggregated Host Railroad Performance Trend

2 Year Snapshot

Total host-responsible delay (HRD) and freight interference (FTI) minutes per 10,000 train-miles incurred by Amtrak trains, aggregated for the six major host railroads for the most recent two years.



Minutes of Delay per 10K Train Miles by Host for August 2024

| Host | Service | Total Host Responsible Delays | | Largest Two Delay Categories - Current Month | | | | Route Miles | |
|---------------------|-----------------------------------|-------------------------------|-----------------------|--|------|------|------|-------------|------|
| | | Current Month | Most Recent 12 Months | #1 | | #2 | | | |
| Target | | 900 | 900 | | | | | | |
| BNSF | California Zephyr | 770 | 777 | DSR | 274 | FTI | 252 | 1027 | |
| | Carl Sandburg / Illinois Zephyr | 981 | 801 | DSR | 490 | FTI | 269 | 257 | |
| | Cascades | 1321 | 1426 | FTI | 398 | DSR | 304 | 317 | |
| | Coast Starlight | 1127 | 1215 | RTE | 328 | FTI | 272 | 158 | |
| | Empire Builder | 710 | 834 | FTI | 395 | DSR | 158 | 2147 | |
| | Heartland Flyer | 2240 | 1533 | DSR | 1374 | FTI | 737 | 236 | |
| | Pacific Surfliner | 1531 | 1277 | FTI | 464 | DCS | 391 | 22 | |
| | San Joaquins | 1046 | 1098 | PTI | 422 | FTI | 319 | 284 | |
| | Southwest Chief | 1079 | 802 | FTI | 379 | DSR | 314 | 2206 | |
| | Sunset Ltd | 1205 | 1119 | DSR | 821 | DCS | 182 | 190 | |
| | Texas Eagle | 3580 | 1957 | DSR | 1759 | FTI | 1531 | 116 | |
| CN-IC | Blue Water | 500 | 538 | FTI | 199 | DSR | 174 | 159 | |
| | City Of New Orleans | 729 | 827 | FTI | 243 | DSR | 177 | 930 | |
| | Illini / Saluki | 791 | 743 | DSR | 315 | PTI | 164 | 304 | |
| | Lincoln Service | 3933 | 2005 | FTI | 1547 | DSR | 1320 | 35 | |
| | Lincoln / Missouri | 5205 | 2601 | FTI | 1571 | DSR | 1538 | 35 | |
| | Texas Eagle | 3917 | 1885 | FTI | 1307 | DSR | 1096 | 35 | |
| | | Wolverine | 3047 | 1476 | DSR | 2435 | FTI | 304 | 27 |
| | CPKC | Adirondack | 2121 | 955 | PTI | 1302 | DSR | 310 | 178 |
| Borealis | | 993 | 984 | DSR | 310 | FTI | 244 | 376 | |
| Empire Builder | | 716 | 692 | FTI | 249 | DSR | 226 | 384 | |
| Ethan Allen Express | | 549 | 1821 | DSR | 204 | PTI | 139 | 60 | |
| | | Hiawatha | 179 | 231 | DCS | 58 | FTI | 35 | 53 |
| CSX | Auto Train | 1277 | 1268 | FTI | 455 | DSR | 315 | 898 | |
| | Capitol Ltd | 644 | 688 | FTI | 281 | RTE | 141 | 307 | |
| | Cardinal | 653 | 734 | FTI | 402 | DSR | 139 | 703 | |
| | Carolinian | 1735 | 1705 | FTI | 608 | DSR | 307 | 295 | |
| | Downeaster | 918 | 633 | PTI | 402 | DCS | 219 | 107 | |
| | Lake Shore Ltd | 957 | 718 | FTI | 375 | DSR | 204 | 741 | |
| | Maple Leaf | 881 | 836 | FTI | 392 | DSR | 262 | 298 | |
| | New York - Niagara Falls | 841 | 717 | FTI | 326 | DSR | 267 | 296 | |
| | Palmetto | 1105 | 1008 | FTI | 365 | PTI | 294 | 659 | |
| | Pere Marquette | 228 | 251 | DCS | 140 | DSR | 42 | 135 | |
| | Richmond / Newport News / Norfolk | 1486 | 1452 | FTI | 353 | DSR | 302 | 189 | |
| | | Silver Meteor | 843 | 908 | FTI | 316 | PTI | 181 | 1152 |
| | | Silver Star | 921 | 990 | FTI | 277 | PTI | 182 | 1209 |
| NS | Blue Water | 1368 | 2187 | FTI | 780 | RTE | 224 | 39 | |
| | Capitol Ltd | 1037 | 1153 | FTI | 523 | DSR | 200 | 481 | |
| | Cardinal | 1070 | 1427 | PTI | 739 | FTI | 223 | 79 | |
| | Carolinian | 839 | 805 | PTI | 483 | FTI | 176 | 202 | |
| | Crescent | 905 | 1320 | FTI | 291 | DCS | 215 | 1141 | |
| | Lake Shore Ltd | 954 | 1145 | FTI | 391 | PTI | 230 | 339 | |
| | Pennsylvanian | 790 | 823 | FTI | 398 | RTE | 198 | 249 | |
| | Pere Marquette | 1589 | 1753 | DCS | 573 | FTI | 506 | 39 | |
| | Piedmont | 765 | 817 | PTI | 251 | FTI | 195 | 173 | |
| | Richmond / Newport News / Norfolk | 607 | 978 | FTI | 228 | DCS | 185 | 81 | |
| | Roanoke | 824 | 789 | FTI | 347 | PTI | 305 | 216 | |
| | | Silver Star | 493 | 597 | DCS | 366 | FTI | 104 | 28 |
| | | Wolverine | 1679 | 2127 | FTI | 967 | DSR | 225 | 39 |
| UP | California Zephyr | 1178 | 1137 | DSR | 501 | FTI | 342 | 1381 | |
| | Capitol Corridor | 667 | 581 | PTI | 226 | DSR | 146 | 171 | |
| | Cascades | 2032 | 1545 | DSR | 675 | FTI | 627 | 125 | |
| | Coast Starlight | 1486 | 1411 | DSR | 449 | FTI | 363 | 1162 | |
| | Lincoln Service | 1027 | 953 | PTI | 358 | FTI | 298 | 231 | |
| | Lincoln / Missouri | 979 | 817 | FTI | 350 | DSR | 227 | 502 | |
| | Missouri | 971 | 756 | FTI | 439 | PTI | 254 | 271 | |
| | Pacific Surfliner | 1307 | 1360 | PTI | 599 | DCS | 503 | 174 | |
| | San Joaquins | 1890 | 1283 | DSR | 798 | PTI | 498 | 88 | |
| | Sunset Ltd | 1399 | 1335 | FTI | 798 | RTE | 216 | 1784 | |
| | | Texas Eagle | 1647 | 1392 | FTI | 887 | DSR | 432 | 1073 |

Minutes of Delay per 10K Train Miles by Host for August 2024

| Host | Service | Total Host Responsible Delays | | Largest Two Delay Categories - Current Month | | | | Route Miles |
|---------------|-----------------------------------|-------------------------------|-----------------------|--|------|-----|------|-------------|
| | | Current Month | Most Recent 12 Months | #1 | | #2 | | |
| Target | | 900 | 900 | | | | | |
| Amtrak | Adirondack | 725 | 516 | PTI | 266 | DCS | 241 | 100 |
| | Blue Water | 1060 | 492 | DSR | 994 | RTE | 37 | 99 |
| | Ethan Allen Express | 640 | 358 | DCS | 235 | RTE | 152 | 100 |
| | Maple Leaf | 534 | 362 | DCS | 325 | PTI | 83 | 109 |
| | New York - Albany | 268 | 312 | PTI | 121 | RTE | 37 | 81 |
| | New York - Niagara Falls | 906 | 538 | DCS | 348 | PTI | 314 | 109 |
| | Wolverine | 1399 | 665 | DSR | 1015 | PTI | 229 | 99 |
| BBrRR | Cardinal | 1322 | 1397 | PTI | 476 | FTI | 459 | 132 |
| CN-Canada | Adirondack | - | 7241 | | - | | - | 49 |
| Fla DOT | Silver Meteor | 1751 | 1200 | CTI | 858 | DCS | 344 | 68 |
| | Silver Star | 1251 | 1115 | CTI | 771 | DCS | 325 | 68 |
| FR | Auto Train | 4834 | 4952 | CTI | 3142 | DSR | 1206 | 16 |
| | Silver Meteor | 3949 | 3552 | CTI | 1231 | DSR | 1195 | 61 |
| | Silver Star | 2963 | 2495 | DSR | 1050 | CTI | 729 | 61 |
| MADOT | Springfield Shuttles | 782 | 836 | DSR | 626 | RTE | 99 | 36 |
| | Vermonters | 566 | 1172 | PTI | 245 | FTI | 123 | 50 |
| MBTA | Downeaster | 771 | 1126 | DCS | 332 | PTI | 139 | 38 |
| Metra | Borealis | 1667 | 1340 | CTI | 1360 | DCS | 119 | 33 |
| | Empire Builder | 2462 | 2181 | CTI | 1385 | PTI | 471 | 29 |
| | Hiawatha | 1533 | 2082 | CTI | 1076 | DSR | 118 | 29 |
| MIDOT | Blue Water | 132 | 430 | PTI | 103 | RTE | 29 | 22 |
| | Wolverine | 685 | 664 | PTI | 429 | DSR | 152 | 134 |
| MNRR | Acela | 1560 | 1685 | DSR | 959 | CTI | 453 | 56 |
| | Adirondack | 1301 | 1208 | CTI | 676 | DMW | 172 | 64 |
| | Ethan Allen Express | 1509 | 1136 | CTI | 932 | DSR | 284 | 64 |
| | Lake Shore Ltd | 1215 | 981 | CTI | 633 | DSR | 284 | 64 |
| | Maple Leaf | 944 | 830 | CTI | 522 | DCS | 170 | 64 |
| | New York - Albany | 1059 | 1062 | CTI | 688 | DSR | 182 | 64 |
| | New York - Niagara Falls | 1275 | 1419 | CTI | 889 | DSR | 149 | 64 |
| | Richmond / Newport News / Norfolk | 1546 | 1827 | DSR | 859 | CTI | 460 | 56 |
| | Vermonters | 2529 | 2775 | DSR | 1339 | CTI | 792 | 56 |
| NECR | Vermonters | 1314 | 1638 | DSR | 998 | DMW | 231 | 192 |
| NMDOT | Southwest Chief | 3490 | 3124 | CTI | 1691 | DCS | 1401 | 80 |
| SCRRR | Coast Starlight | 1737 | 1627 | PTI | 1343 | CTI | 168 | 48 |
| | Pacific Surfliner | 994 | 1021 | PTI | 375 | CTI | 338 | 95 |
| SDNRR | Pacific Surfliner | 979 | 912 | CTI | 442 | PTI | 293 | 60 |
| Sounder | Cascades | 949 | 912 | PTI | 536 | CTI | 162 | 20 |
| | Coast Starlight | 3202 | 2006 | PTI | 2444 | CTI | 476 | 20 |
| TRE | Texas Eagle | 549 | 480 | CTI | 402 | RTE | 64 | 33 |
| VTR | Ethan Allen Express | 1562 | 578 | DSR | 1486 | DMW | 49 | 91 |

The numbers included in this document are preliminary and are for informational purposes only.

Excludes hosts with fewer than 15 route miles.

Delays on the Amtrak-owned portion of the Northeast Corridor are shown in a separate report, with tighter delay standards.

Northeast Regional: Roanoke includes all trains between Roanoke and points on the NEC; Richmond / Newport News / Norfolk includes all trains between these locations and points on the NEC.

Minutes of Delay per 10K Train Miles by Service for August 2024

| Service | | Host | Total Host Responsible Delays | | Largest Two Delay Categories - Current Month | | | | Route Miles |
|--------------------------------------|-----------------------------------|-----------|-------------------------------|-------------|--|------|-----|------|-------------|
| | | | Current | Most | #1 | #2 | | | |
| Target | | | 900 | 900 | | | | | |
| Acela | | | | | | | | | |
| Acela | | MNRR | 1560 | 1685 | DSR | 959 | CTI | 453 | 56 |
| All Other NEC Corridor Routes | | | | | | | | | |
| Northeast Regional | Richmond / Newport News / Norfolk | CSX | 1486 | 1452 | FTI | 353 | DSR | 302 | 189 |
| | | NS | 607 | 978 | FTI | 228 | DCS | 185 | 81 |
| | | MNRR | 1546 | 1827 | DSR | 859 | CTI | 460 | 56 |
| | Roanoke | NS | 824 | 789 | FTI | 347 | PTI | 305 | 216 |
| | Springfield Shuttles | MADOT | 782 | 836 | DSR | 626 | RTE | 99 | 36 |
| Non-NEC Corridor Routes | | | | | | | | | |
| Borealis | | CPKC | 993 | 984 | DSR | 310 | FTI | 244 | 376 |
| | | Metra | 1667 | 1340 | CTI | 1360 | DCS | 119 | 33 |
| Capitol Corridor | | UP | 667 | 581 | PTI | 226 | DSR | 146 | 171 |
| Carolinian | | CSX | 1735 | 1705 | FTI | 608 | DSR | 307 | 295 |
| | | NS | 839 | 805 | PTI | 483 | FTI | 176 | 202 |
| Cascades | | BNSF | 1321 | 1426 | FTI | 398 | DSR | 304 | 317 |
| | | UP | 2032 | 1545 | DSR | 675 | FTI | 627 | 125 |
| | | Sounder | 949 | 912 | PTI | 536 | CTI | 162 | 20 |
| Downeaster | | CSX | 918 | 633 | PTI | 402 | DCS | 219 | 107 |
| | | MBTA | 771 | 1126 | DCS | 332 | PTI | 139 | 38 |
| Empire | Adirondack | CPKC | 2121 | 955 | PTI | 1302 | DSR | 310 | 178 |
| | | Amtrak | 725 | 516 | PTI | 266 | DCS | 241 | 100 |
| | | CN-Canada | - | 7241 | - | - | - | - | 49 |
| | | MNRR | 1301 | 1208 | CTI | 676 | DMW | 172 | 64 |
| | Ethan Allen Express | CPKC | 549 | 1821 | DSR | 204 | PTI | 139 | 60 |
| | | Amtrak | 640 | 358 | DCS | 235 | RTE | 152 | 100 |
| | | MNRR | 1509 | 1136 | CTI | 932 | DSR | 284 | 64 |
| | | VTR | 1562 | 578 | DSR | 1486 | DMW | 49 | 91 |
| | Maple Leaf | CSX | 881 | 836 | FTI | 392 | DSR | 262 | 298 |
| | | Amtrak | 534 | 362 | DCS | 325 | PTI | 83 | 109 |
| | | MNRR | 944 | 830 | CTI | 522 | DCS | 170 | 64 |
| | New York - Albany | Amtrak | 268 | 312 | PTI | 121 | RTE | 37 | 81 |
| | | MNRR | 1059 | 1062 | CTI | 688 | DSR | 182 | 64 |
| | New York - Niagara Falls | CSX | 841 | 717 | FTI | 326 | DSR | 267 | 296 |
| | | Amtrak | 906 | 538 | DCS | 348 | PTI | 314 | 109 |
| | | MNRR | 1275 | 1419 | CTI | 889 | DSR | 149 | 64 |
| Heartland Flyer | | BNSF | 2240 | 1533 | DSR | 1374 | FTI | 737 | 236 |
| Hiawatha | | CPKC | 179 | 231 | DCS | 58 | FTI | 35 | 53 |
| | | Metra | 1533 | 2082 | CTI | 1076 | DSR | 118 | 29 |
| Illinois | Carl Sandburg / Illinois Zephyr | BNSF | 981 | 801 | DSR | 490 | FTI | 269 | 257 |
| | Illini / Saluki | CN-IC | 791 | 743 | DSR | 315 | PTI | 164 | 304 |
| | Lincoln Service | CN-IC | 3933 | 2005 | FTI | 1547 | DSR | 1320 | 35 |
| | | UP | 1027 | 953 | PTI | 358 | FTI | 298 | 231 |
| Lincoln / Missouri | | CN-IC | 5205 | 2601 | FTI | 1571 | DSR | 1538 | 35 |
| | | UP | 979 | 817 | FTI | 350 | DSR | 227 | 502 |
| Michigan | Blue Water | CN-IC | 500 | 538 | FTI | 199 | DSR | 174 | 159 |
| | | NS | 1368 | 2187 | FTI | 780 | RTE | 224 | 39 |
| | | Amtrak | 1060 | 492 | DSR | 994 | RTE | 37 | 99 |
| | | MIDOT | 132 | 430 | PTI | 103 | RTE | 29 | 22 |
| | Pere Marquette | CSX | 228 | 251 | DCS | 140 | DSR | 42 | 135 |
| | | NS | 1589 | 1753 | DCS | 573 | FTI | 506 | 39 |
| | Wolverine | CN-IC | 3047 | 1476 | DSR | 2435 | FTI | 304 | 27 |
| | | NS | 1679 | 2127 | FTI | 967 | DSR | 225 | 39 |
| | | Amtrak | 1399 | 665 | DSR | 1015 | PTI | 229 | 99 |
| | | MIDOT | 685 | 664 | PTI | 429 | DSR | 152 | 134 |
| Missouri | | UP | 971 | 756 | FTI | 439 | PTI | 254 | 271 |
| Pacific Surfliner | | BNSF | 1531 | 1277 | FTI | 464 | DCS | 391 | 22 |
| | | UP | 1307 | 1360 | PTI | 599 | DCS | 503 | 174 |
| | | SCRRA | 994 | 1021 | PTI | 375 | CTI | 338 | 95 |
| | | SDNRR | 979 | 912 | CTI | 442 | PTI | 293 | 60 |
| Pennsylvanian | | NS | 790 | 823 | FTI | 398 | RTE | 198 | 249 |
| Piedmont | | NS | 765 | 817 | PTI | 251 | FTI | 195 | 173 |
| San Joaquins | | BNSF | 1046 | 1098 | PTI | 422 | FTI | 319 | 284 |
| | | UP | 1890 | 1283 | DSR | 798 | PTI | 498 | 88 |
| Vermont | | MADOT | 566 | 1172 | PTI | 245 | FTI | 123 | 50 |
| | | MNRR | 2529 | 2775 | DSR | 1339 | CTI | 792 | 56 |
| | | NECR | 1314 | 1638 | DSR | 998 | DMW | 231 | 192 |

Minutes of Delay per 10K Train Miles by Service for August 2024

| Service | Host | Total Host Responsible Delays | | Largest Two Delay Categories - Current Month | | | | Route Miles |
|-----------------------------|---------|-------------------------------|------------|--|------|-----|------|-------------|
| | | Current | Most | #1 | | #2 | | |
| Target | | 900 | 900 | | | | | |
| Long-Distance Routes | | | | | | | | |
| Auto Train | CSX | 1277 | 1268 | FTI | 455 | DSR | 315 | 898 |
| | FR | 4834 | 4952 | CTI | 3142 | DSR | 1206 | 16 |
| California Zephyr | BNSF | 770 | 777 | DSR | 274 | FTI | 252 | 1027 |
| | UP | 1178 | 1137 | DSR | 501 | FTI | 342 | 1381 |
| Capitol Ltd | CSX | 644 | 688 | FTI | 281 | RTE | 141 | 307 |
| | NS | 1037 | 1153 | FTI | 523 | DSR | 200 | 481 |
| Cardinal | CSX | 653 | 734 | FTI | 402 | DSR | 139 | 703 |
| | NS | 1070 | 1427 | PTI | 739 | FTI | 223 | 79 |
| | BBrRR | 1322 | 1397 | PTI | 476 | FTI | 459 | 132 |
| City Of New Orleans | CN-IC | 729 | 827 | FTI | 243 | DSR | 177 | 930 |
| Coast Starlight | BNSF | 1127 | 1215 | RTE | 328 | FTI | 272 | 158 |
| | UP | 1486 | 1411 | DSR | 449 | FTI | 363 | 1162 |
| | SCRRA | 1737 | 1627 | PTI | 1343 | CTI | 168 | 48 |
| | Sounder | 3202 | 2006 | PTI | 2444 | CTI | 476 | 20 |
| Crescent | NS | 905 | 1320 | FTI | 291 | DCS | 215 | 1141 |
| Empire Builder | BNSF | 710 | 834 | FTI | 395 | DSR | 158 | 2147 |
| | CPKC | 716 | 692 | FTI | 249 | DSR | 226 | 384 |
| | Metra | 2462 | 2181 | CTI | 1385 | PTI | 471 | 29 |
| Lake Shore Ltd | CSX | 957 | 718 | FTI | 375 | DSR | 204 | 741 |
| | NS | 954 | 1145 | FTI | 391 | PTI | 230 | 339 |
| | MNRR | 1215 | 981 | CTI | 633 | DSR | 284 | 64 |
| Palmetto | CSX | 1105 | 1008 | FTI | 365 | PTI | 294 | 659 |
| Silver Meteor | CSX | 843 | 908 | FTI | 316 | PTI | 181 | 1152 |
| | Fla DOT | 1751 | 1200 | CTI | 858 | DCS | 344 | 68 |
| | FR | 3949 | 3552 | CTI | 1231 | DSR | 1195 | 61 |
| Silver Star | CSX | 921 | 990 | FTI | 277 | PTI | 182 | 1209 |
| | NS | 493 | 597 | DCS | 366 | FTI | 104 | 28 |
| | Fla DOT | 1251 | 1115 | CTI | 771 | DCS | 325 | 68 |
| | FR | 2963 | 2495 | DSR | 1050 | CTI | 729 | 61 |
| Southwest Chief | BNSF | 1079 | 802 | FTI | 379 | DSR | 314 | 2206 |
| | NMDOT | 3490 | 3124 | CTI | 1691 | DCS | 1401 | 80 |
| Sunset Ltd | BNSF | 1205 | 1119 | DSR | 821 | DCS | 182 | 190 |
| | UP | 1399 | 1335 | FTI | 798 | RTE | 216 | 1784 |
| Texas Eagle | BNSF | 3580 | 1957 | DSR | 1759 | FTI | 1531 | 116 |
| | CN-IC | 3917 | 1885 | FTI | 1307 | DSR | 1096 | 35 |
| | UP | 1647 | 1392 | FTI | 887 | DSR | 432 | 1073 |
| | TRE | 549 | 480 | CTI | 402 | RTE | 64 | 33 |

The numbers included in this document are preliminary and are for informational purposes only.

Excludes hosts with fewer than 15 route miles.

Delays on the Amtrak-owned portion of the Northeast Corridor are shown in a separate report, with tighter delay standards.

Northeast Regional: Roanoke includes all trains between Roanoke and points on the NEC; Richmond / Newport News /

Norfolk includes all trains between these locations and points on the NEC.



Host Railroad Report - All-Stations and Customer OTP for August 2024

| Service | All-Stations OTP | | Customer OTP | | Avg Mins Late per Late Rider** | |
|-----------------------------------|------------------|-----------------------|---------------|-----------------------|--------------------------------|-----------------------|
| | Current Month | Most Recent 12 Months | Current Month | Most Recent 12 Months | Current Month | Most Recent 12 Months |
| Amtrak System | 72.0% | 75.8% | 69.9% | 75.0% | 54 | 55 |
| NEC Corridor Routes | 77.9% | 82.4% | 73.1% | 78.7% | 45 | 44 |
| Minimum Standard | | | 80.0% | 80.0% | | |
| Acela* | 76.0% | 81.4% | 71.5% | 78.2% | 37 | 35 |
| Keystone | 91.1% | 93.5% | 90.5% | 92.3% | 41 | 38 |
| Northeast Regional | 74.2% | 78.9% | 70.1% | 75.9% | 47 | 47 |
| On Spine Northeast Regional | 77.1% | 83.0% | 74.2% | 81.1% | 43 | 45 |
| Richmond / Newport News / Norfolk | 67.7% | 71.9% | 64.0% | 68.4% | 49 | 47 |
| Roanoke | 67.3% | 75.0% | 64.8% | 71.5% | 62 | 52 |
| Springfield Shuttles | 88.9% | 86.9% | 87.6% | 87.0% | 33 | 37 |
| Non-NEC Corridor Routes | 76.8% | 79.8% | 71.6% | 76.3% | 46 | 46 |
| Minimum Standard | | | 80.0% | 80.0% | | |
| Borealis | 63.2% | 62.2% | 45.4% | 45.2% | 45 | 45 |
| Capitol Corridor | 90.4% | 91.5% | 88.6% | 88.9% | 40 | 38 |
| Carolinian | 41.4% | 54.9% | 36.0% | 52.0% | 72 | 62 |
| Cascades | 59.6% | 64.9% | 47.9% | 57.1% | 45 | 47 |
| Downeaster | 80.6% | 88.7% | 75.0% | 81.1% | 42 | 39 |
| Empire | 77.9% | 80.1% | 76.9% | 80.5% | 44 | 45 |
| Adirondack | 87.5% | 76.1% | 76.7% | 75.3% | 32 | 39 |
| Berkshire Flyer | 67.0% | 60.9% | 71.9% | 62.6% | 45 | 55 |
| Ethan Allen Express | 65.4% | 73.7% | 59.9% | 69.0% | 36 | 42 |
| Maple Leaf | 66.5% | 73.3% | 73.0% | 75.1% | 55 | 51 |
| New York - Albany | 90.9% | 89.2% | 88.4% | 88.3% | 28 | 40 |
| New York - Niagara Falls | 71.4% | 77.9% | 67.1% | 75.7% | 54 | 49 |
| Heartland Flyer | 50.9% | 71.6% | 38.4% | 68.4% | 48 | 46 |
| Hiawatha | 88.4% | 90.1% | 85.8% | 86.2% | 45 | 35 |
| Illinois | 74.6% | 79.4% | 70.6% | 77.7% | 42 | 51 |
| Carl Sandburg / Illinois Zephyr | 70.9% | 81.6% | 81.6% | 82.2% | 33 | 45 |
| Illini / Saluki | 79.7% | 82.4% | 77.1% | 83.3% | 51 | 63 |
| Lincoln Service | 73.3% | 75.4% | 63.2% | 72.3% | 40 | 47 |
| Lincoln / Missouri | 48.4% | 63.4% | 43.5% | 62.3% | 54 | 48 |
| Michigan | 58.0% | 71.5% | 69.1% | 71.9% | 40 | 44 |
| Blue Water | 78.4% | 78.9% | 69.0% | 74.1% | 32 | 46 |
| Pere Marquette | 84.8% | 87.7% | 76.8% | 83.3% | 37 | 37 |
| Wolverine | 48.7% | 67.1% | 67.3% | 68.5% | 44 | 44 |
| Missouri | 78.1% | 81.2% | 75.5% | 84.7% | 50 | 45 |
| Pacific Surfliner | 87.8% | 84.2% | 84.6% | 84.1% | 40 | 45 |
| Pennsylvanian | 53.1% | 69.9% | 53.2% | 69.9% | 49 | 43 |
| Piedmont | 82.2% | 81.8% | 76.6% | 73.3% | 39 | 43 |
| San Joaquins | 77.6% | 77.0% | 72.1% | 73.2% | 39 | 44 |
| Vermonteer | 65.2% | 62.3% | 61.0% | 66.3% | 45 | 48 |
| Long-Distance Routes | 48.8% | 53.8% | 51.8% | 57.1% | 90 | 88 |
| Minimum Standard | | | 80.0% | 80.0% | | |
| Auto Train | 66.1% | 75.3% | 54.3% | 58.5% | 90 | 84 |
| California Zephyr | 42.9% | 42.7% | 47.1% | 46.9% | 95 | 106 |
| Capitol Ltd | 63.2% | 66.1% | 69.5% | 70.2% | 46 | 62 |
| Cardinal | 63.3% | 58.1% | 59.7% | 58.2% | 70 | 69 |
| City Of New Orleans | 69.5% | 66.1% | 78.2% | 77.5% | 71 | 80 |
| Coast Starlight | 58.0% | 56.0% | 59.5% | 59.3% | 59 | 82 |
| Crescent | 51.6% | 54.9% | 59.0% | 58.2% | 72 | 73 |
| Empire Builder | 49.9% | 53.6% | 49.3% | 54.7% | 102 | 110 |
| Lake Shore Ltd | 71.4% | 73.4% | 69.1% | 74.4% | 46 | 64 |
| Palmetto | 56.4% | 66.8% | 56.3% | 66.5% | 59 | 54 |
| Silver Meteor | 35.5% | 50.5% | 32.6% | 46.8% | 119 | 85 |
| Silver Star | 38.7% | 44.8% | 35.3% | 41.2% | 94 | 82 |
| Southwest Chief | 19.5% | 34.1% | 15.7% | 33.0% | 135 | 123 |
| Sunset Ltd | 48.4% | 48.5% | 54.3% | 57.2% | 104 | 113 |
| Texas Eagle | 46.0% | 56.2% | 54.3% | 61.9% | 90 | 92 |

The numbers included in this document are preliminary and are for informational purposes only.
 Northeast Regional: Roanoke includes all trains between Roanoke and points on the NEC; Richmond/Newport News/Norfolk includes all trains between these locations and points on the NEC.

* Acela on-time performance target is 90.0%

** Excludes on-time Customers



Host Railroad Responsible Delays

| Code | Code Description | Explanation |
|------|------------------------------|--|
| CTI | Commuter Train Interference | Delays for meeting or following commuter trains |
| DCS | Signal Delays | Signal failure or All Other signal delays, wayside defect-detector false-alarms, defective road crossing protection, efficiency tests, drawbridge stuck open |
| DMW | Maintenance of Way | Maintenance of Way delays including holds for track repairs or MW foreman to clear |
| DSR | Slow Order Delays | Temporary slow orders, except heat or cold orders |
| DTR | Detour | Delays from detours |
| FTI | Freight Train Interference | Delays from freight trains |
| PTI | Passenger Train Interference | Delays for meeting or following All Other passenger trains |
| RTE | Routing | Routing-dispatching delays including diversions, late track bulletins, etc. |

Amtrak Responsible Delays

| Code | Code Description | Explanation |
|------|------------------------|--|
| ADA | Passenger Related | All delays related to disabled passengers, wheel chair lifts, guide dogs, etc. |
| CAR | Car Failure | Mechanical failure on all types of cars |
| CCR | Cab Car Failure | Mechanical failure on Cab Cars |
| CON | Hold for Connection | Holding for connections from All Other trains or buses. |
| ENG | Locomotive Failure | Mechanical failure on engines. |
| HLD | Passenger Related | All delays related to passengers, checked-baggage, large groups, etc. |
| INJ | Injury Delay | Delay due to injured passengers or employees. |
| ITI | Initial Terminal Delay | Delay at initial terminal due to late arriving inbound trains causing late release of equipment. |
| OTH | Miscellaneous Delays | Lost-on-run, heavy trains, unable to make normal speed, etc. |
| SVS | Servicing | All switching and servicing delays |
| SYS | Crew & System | Delays related to crews including lateness, lone-engineer delays |

Third-Party Delays

| Code | Code Description | Explanation |
|------|----------------------|---|
| CUI | Customs | U.S. and Canadian customs delays; Immigration-related delays |
| DBS | Debris | Debris strikes |
| MBO | Drawbridge Openings | Movable bridge openings for marine traffic where no bridge failure is involved |
| NOD | Unused Recovery Time | Wait for departure time |
| POL | Police-Related | Police/fire department holds on right-of-way or on-board trains |
| TRS | Trespassers | Trespasser incidents including road crossing accidents, trespasser / animal strikes, vehicle stuck on track ahead, bridge strikes |
| WTR | Weather-Related | All weather-related delays including floods/washouts, earthquake-related delays, heat or cold orders, slippery rail due to leaves |

*These delay codes are applicable to Off-NEC routes only.