



Host Railroad Report

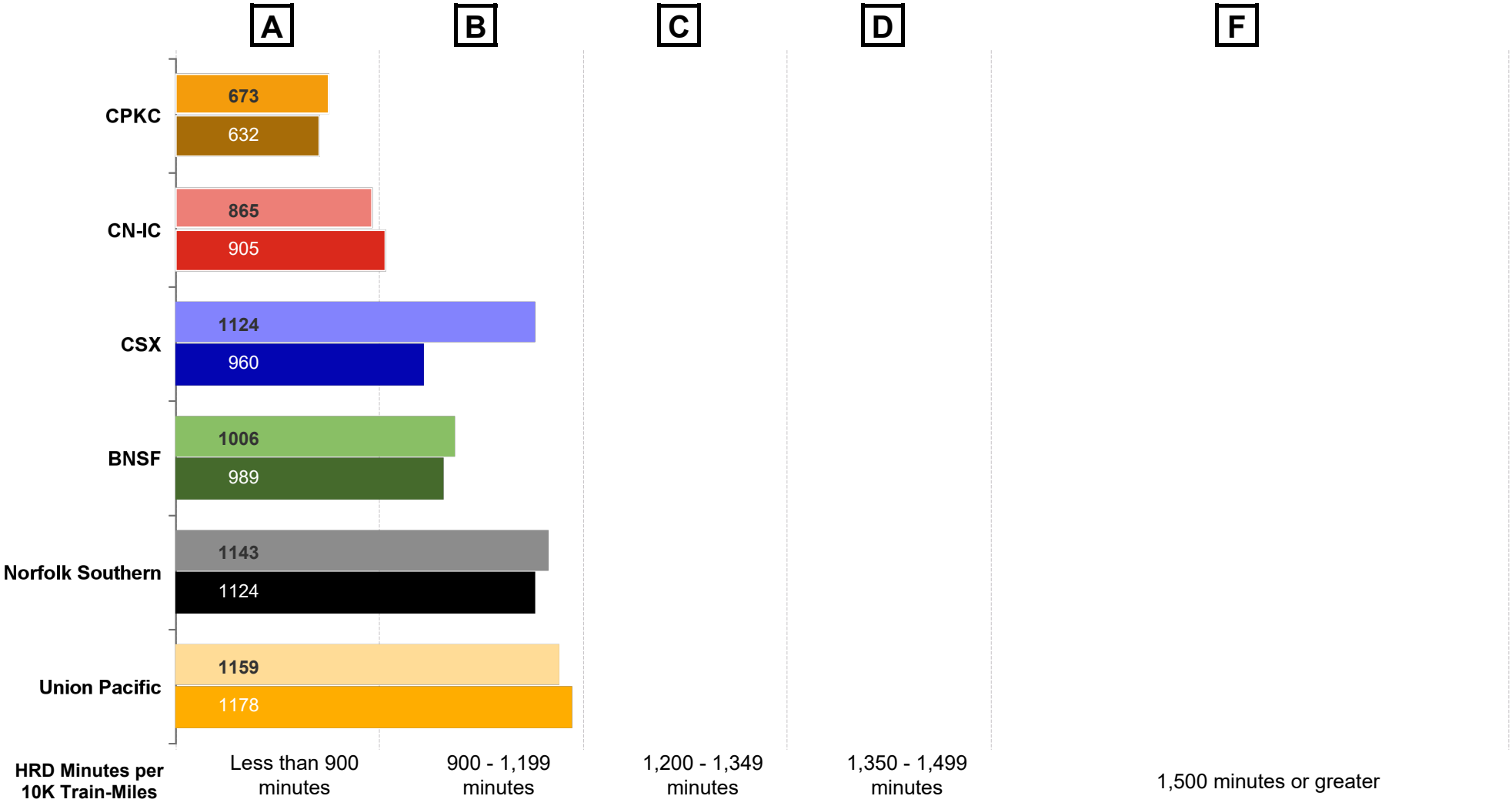
Amtrak Train Performance on Host Railroads

Data through April 2024

Host Railroad Report Card Update

Current Month and 1 Year Snapshot

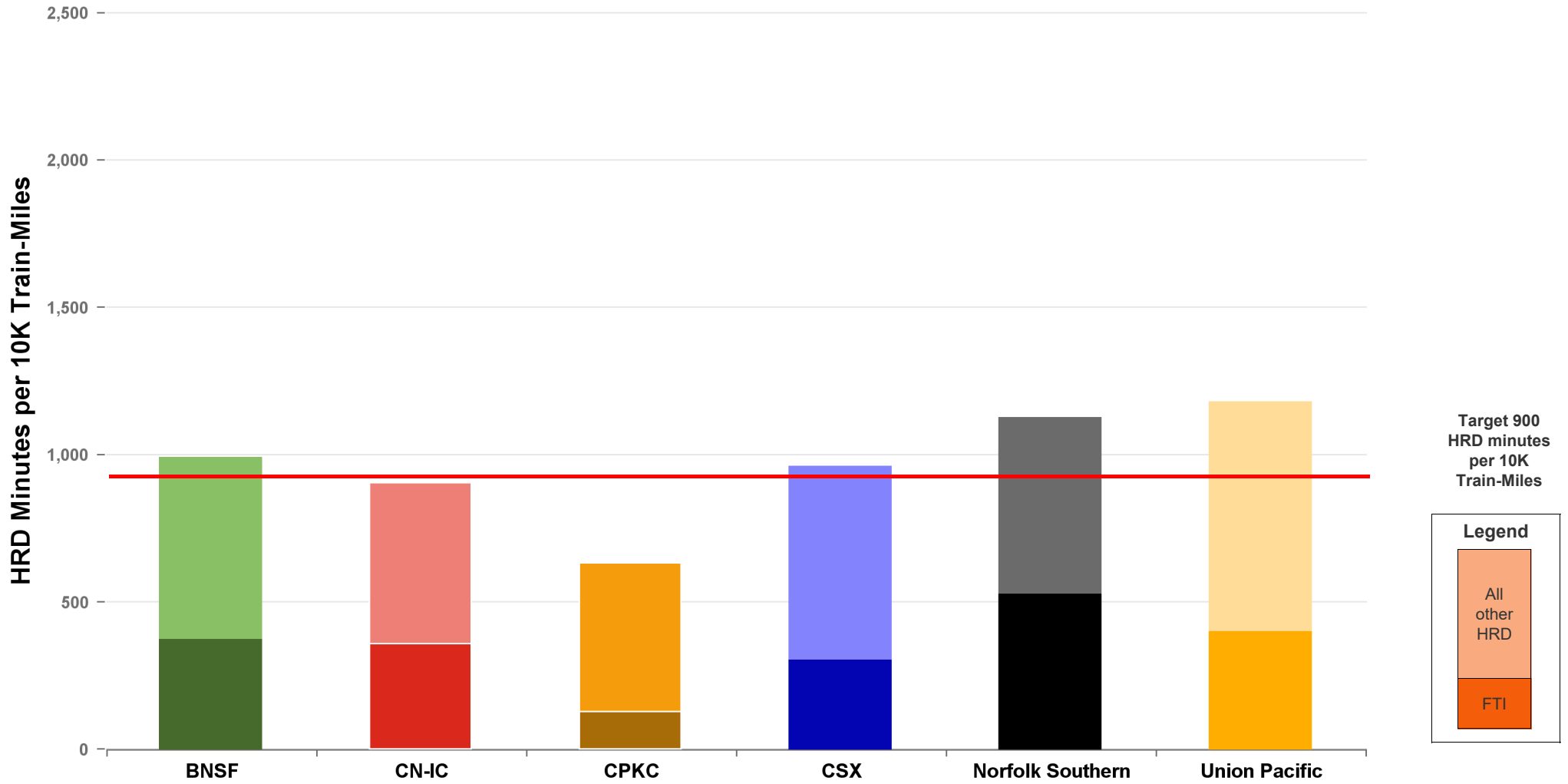
A monthly update of the Host Railroad Report Card, which grades the six major host railroads based on host responsible delay (HRD) minutes per 10,000 train-miles for the current month (lighter shade) and the most recent 12 months.



Total Host-Responsible Delays

1 Year Snapshot

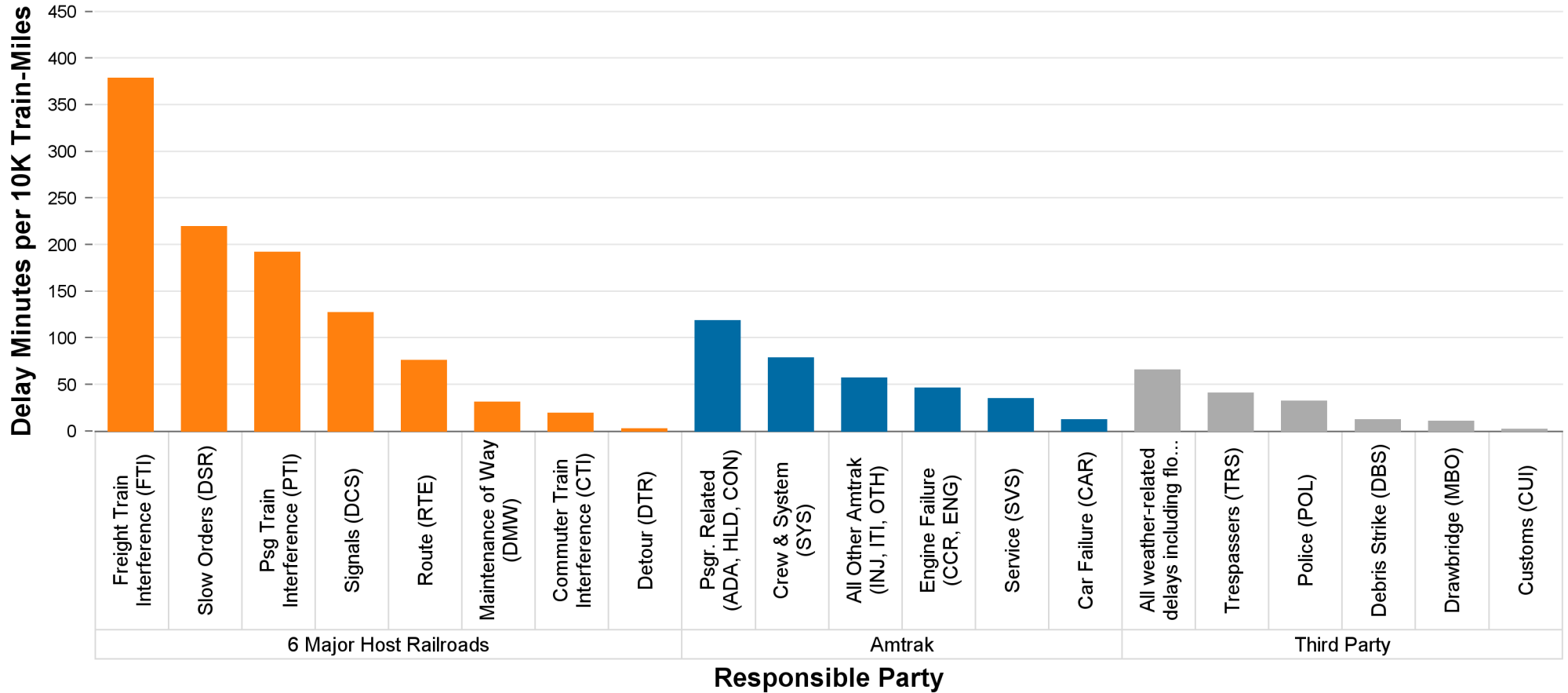
Total host-responsible delay (HRD) minutes per 10,000 train-miles incurred by Amtrak trains on the six major host railroads, with delays attributable to freight train interference (FTI) shaded.



Delays to Amtrak Trains by Responsible Party

1 Year Snapshot

Delay minutes per 10,000 train-miles on the six major host railroads categorized by delay type and responsible party.

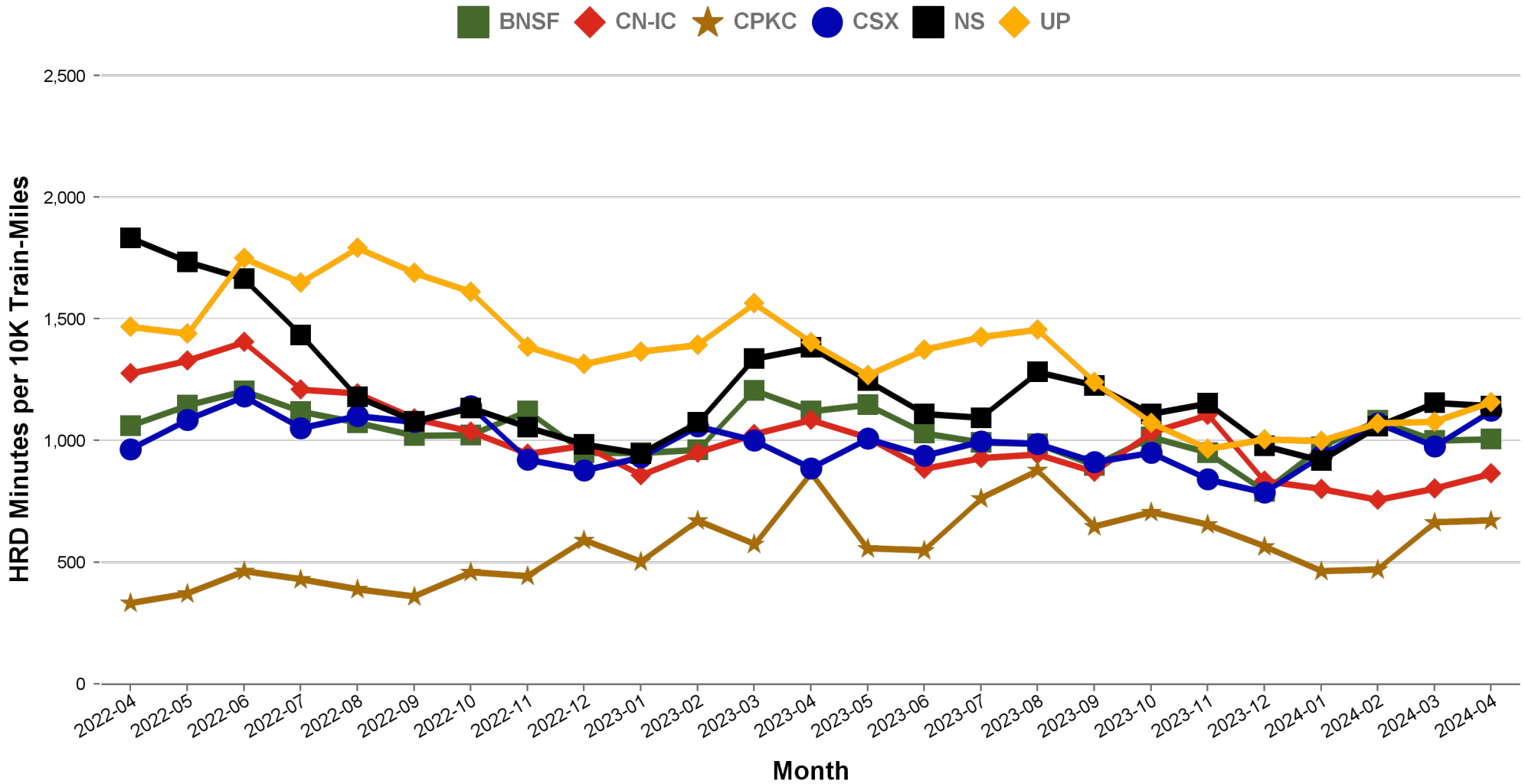


| Responsible Party | 6 Major Host Railroads | Amtrak | Third Party |
|-----------------------------------|------------------------|--------|-------------|
| Delay Minutes per 10K Train-Miles | 1032 | 345 | 161 |
| Percentage of Total Delays | 67.1% | 22.4% | 10.5% |

Total Host-Responsible Delays

2 Year Snapshot

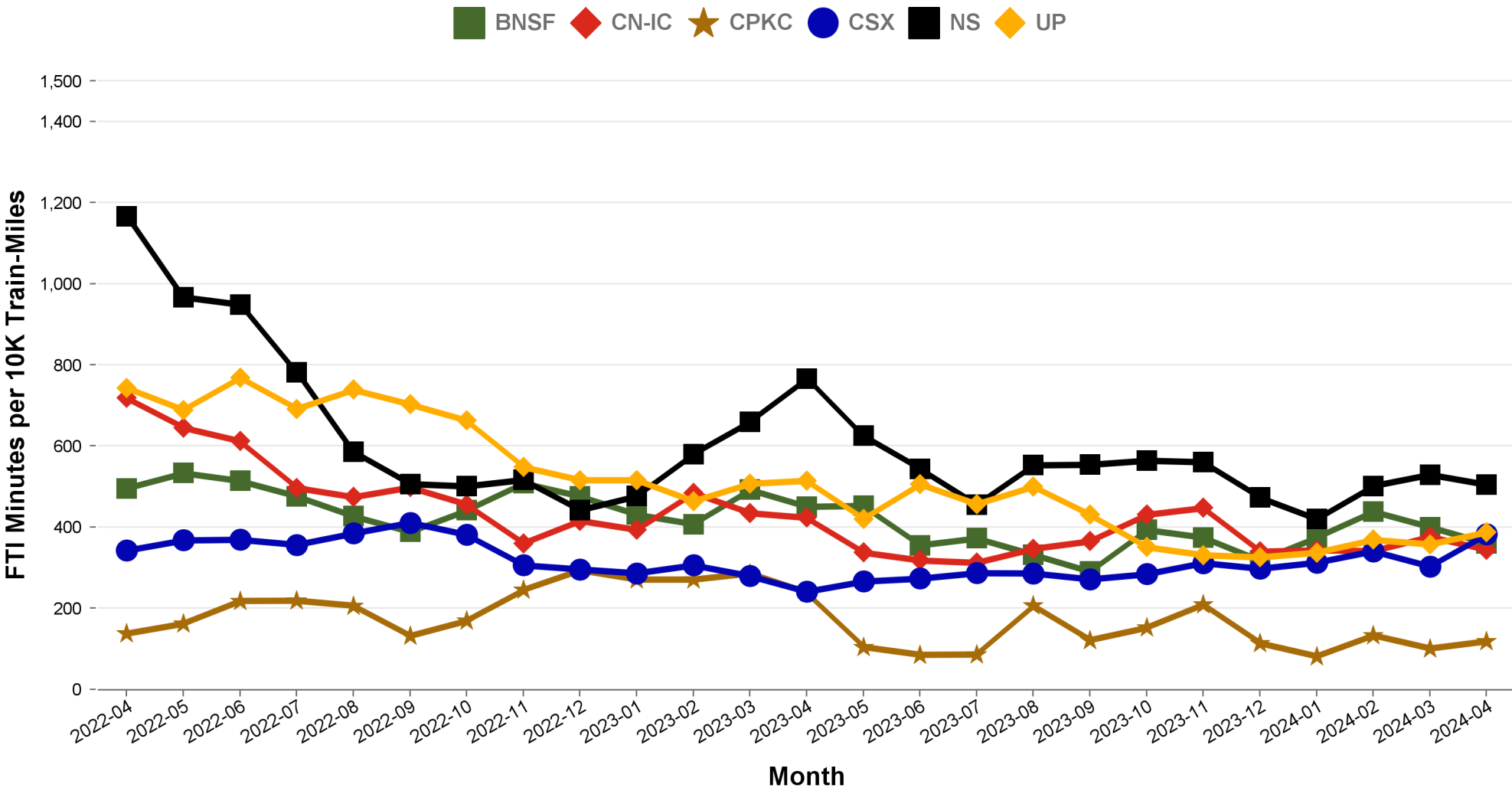
Total host-responsible delay (HRD) minutes per 10,000 train-miles incurred by Amtrak trains on each of the six major host railroads for the most recent two years.



Freight Train Interference Delays

2 Year Snapshot

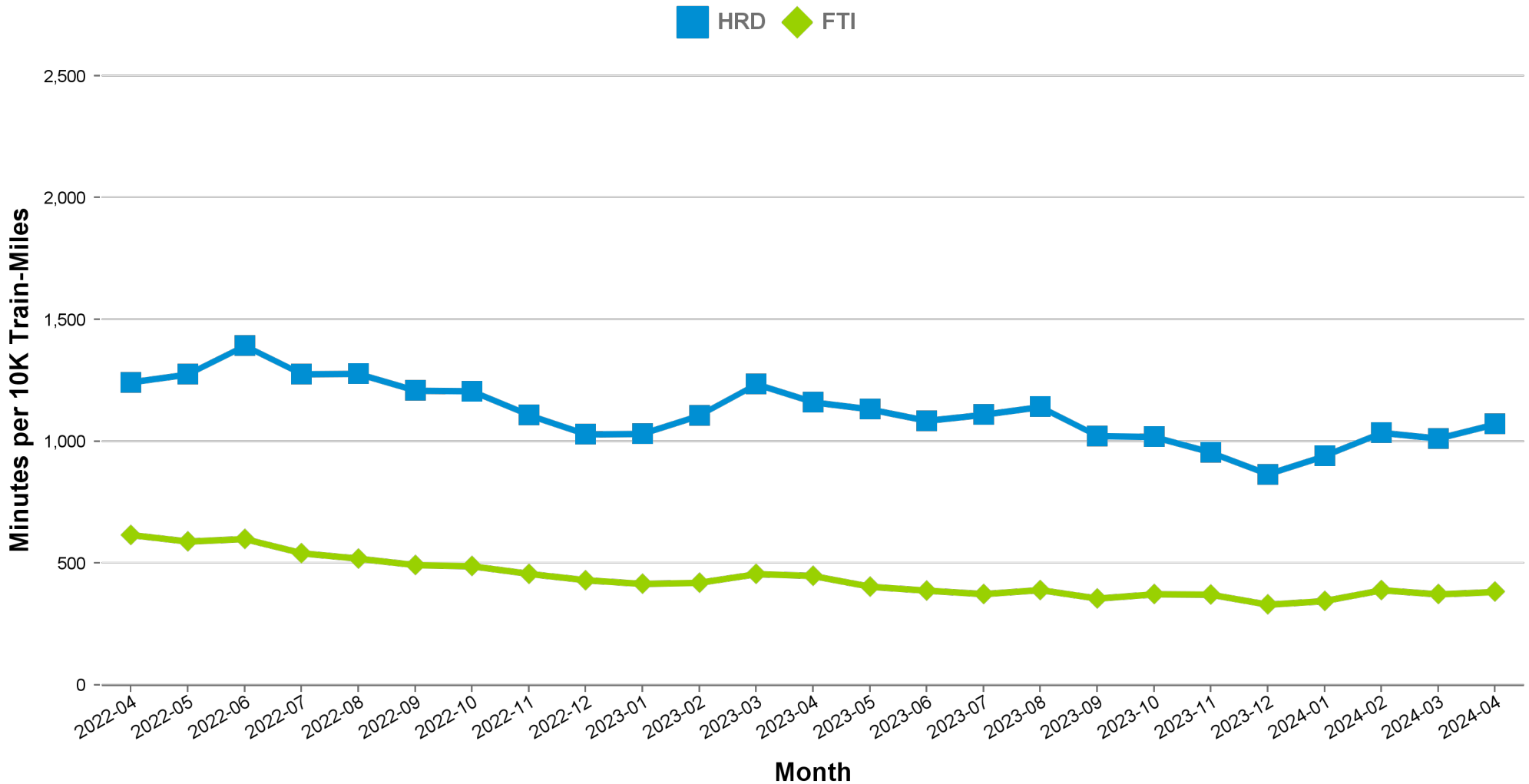
Total delay minutes per 10,000 train-miles attributable to freight train interference (FTI) incurred by Amtrak trains on each of the six major host railroads for the most recent two years.



Aggregated Host Railroad Performance Trend

2 Year Snapshot

Total host-responsible delay (HRD) and freight interference (FTI) minutes per 10,000 train-miles incurred by Amtrak trains, aggregated for the six major host railroads for the most recent two years.



Minutes of Delay per 10K Train Miles by Host for April 2024

| Host | Service | Total Host Responsible Delays | | Largest Two Delay Categories - Current Month | | | | Route Miles |
|---------------------|-----------------------------------|-------------------------------|-----------------------|--|------|-----|-----|-------------|
| | | Current Month | Most Recent 12 Months | #1 | | #2 | | |
| Target | | 900 | 900 | | | | | |
| BNSF | California Zephyr | 804 | 852 | DSR | 352 | FTI | 213 | 1027 |
| | Carl Sandburg / Illinois Zephyr | 749 | 789 | DSR | 290 | FTI | 260 | 257 |
| | Cascades | 1557 | 1303 | FTI | 514 | DSR | 308 | 317 |
| | Coast Starlight | 1609 | 1063 | FTI | 476 | RTE | 360 | 158 |
| | Empire Builder | 869 | 865 | FTI | 475 | DSR | 232 | 2147 |
| | Heartland Flyer | 1047 | 1432 | DSR | 742 | FTI | 284 | 236 |
| | Pacific Surfliner | 1162 | 1154 | DCS | 431 | FTI | 198 | 22 |
| | San Joaquins | 1183 | 1240 | PTI | 472 | FTI | 417 | 284 |
| | Southwest Chief | 673 | 790 | DSR | 263 | FTI | 204 | 2206 |
| | Sunset Ltd | 1011 | 1227 | FTI | 311 | DSR | 309 | 190 |
| Texas Eagle | 2511 | 1416 | DSR | 1694 | FTI | 489 | 116 | |
| CN-IC | Blue Water | 389 | 640 | FTI | 317 | DCS | 34 | 159 |
| | City Of New Orleans | 875 | 808 | FTI | 313 | DSR | 241 | 930 |
| | Illini / Saluki | 693 | 753 | DSR | 285 | FTI | 186 | 304 |
| | Lincoln Service | 1115 | 1712 | FTI | 850 | DSR | 109 | 35 |
| | Lincoln / Missouri | 2046 | 2333 | FTI | 1652 | DCS | 141 | 35 |
| | Texas Eagle | 1397 | 1799 | FTI | 1262 | DCS | 126 | 35 |
| | Wolverine | 1716 | 1417 | DSR | 789 | DCS | 370 | 27 |
| | CPKC | Adirondack | 1031 | 832 | PTI | 521 | DSR | 253 |
| Empire Builder | 575 | 681 | FTI | 238 | DSR | 189 | 384 | |
| Ethan Allen Express | 2328 | 1929 | PTI | 1441 | DSR | 530 | 60 | |
| Hiawatha | 333 | 285 | DSR | 179 | DCS | 62 | 53 | |
| CSX | Auto Train | 1663 | 1236 | FTI | 628 | DSR | 570 | 898 |
| | Capitol Ltd | 712 | 717 | DSR | 196 | RTE | 196 | 307 |
| | Cardinal | 798 | 771 | FTI | 349 | DCS | 146 | 703 |
| | Carolinian | 1664 | 1572 | PTI | 461 | FTI | 408 | 295 |
| | Downeaster | 480 | 630 | PTI | 289 | DCS | 114 | 107 |
| | Lake Shore Ltd | 773 | 743 | FTI | 358 | RTE | 149 | 741 |
| | Maple Leaf | 1111 | 761 | FTI | 761 | DSR | 100 | 298 |
| | New York - Niagara Falls | 662 | 621 | FTI | 403 | DSR | 84 | 296 |
| | Palmetto | 1369 | 1040 | FTI | 520 | PTI | 317 | 659 |
| | Pere Marquette | 113 | 195 | DCS | 71 | DMW | 16 | 135 |
| | Richmond / Newport News / Norfolk | 1501 | 1364 | FTI | 392 | PTI | 273 | 189 |
| | Silver Meteor | 1272 | 886 | FTI | 453 | DSR | 305 | 1152 |
| | Silver Star | 1070 | 968 | DSR | 310 | PTI | 263 | 1209 |
| NS | Blue Water | 1746 | 2240 | FTI | 1055 | DCS | 244 | 39 |
| | Capitol Ltd | 1108 | 1194 | FTI | 526 | RTE | 229 | 481 |
| | Cardinal | 2517 | 1408 | DCS | 752 | PTI | 573 | 79 |
| | Carolinian | 783 | 797 | DCS | 271 | PTI | 269 | 202 |
| | Crescent | 1453 | 1377 | FTI | 757 | DCS | 235 | 1141 |
| | Lake Shore Ltd | 1126 | 1219 | FTI | 635 | PTI | 191 | 339 |
| | Pennsylvanian | 888 | 828 | FTI | 248 | DCS | 214 | 249 |
| | Pere Marquette | 1384 | 1712 | FTI | 835 | DMW | 150 | 39 |
| | Piedmont | 812 | 860 | PTI | 299 | FTI | 205 | 173 |
| | Richmond / Newport News / Norfolk | 1176 | 1020 | FTI | 576 | DCS | 230 | 81 |
| | Roanoke | 891 | 740 | FTI | 348 | PTI | 234 | 216 |
| | Silver Star | 400 | 530 | FTI | 141 | DCS | 118 | 28 |
| | Wolverine | 1832 | 2069 | FTI | 865 | DCS | 497 | 39 |
| | UP | California Zephyr | 1067 | 1269 | FTI | 413 | DSR | 267 |
| Capitol Corridor | | 565 | 607 | PTI | 232 | DCS | 144 | 171 |
| Cascades | | 1913 | 1450 | PTI | 639 | DSR | 611 | 125 |
| Coast Starlight | | 1538 | 1410 | FTI | 499 | DSR | 362 | 1162 |
| Lincoln Service | | 1042 | 908 | PTI | 351 | FTI | 309 | 231 |
| Lincoln / Missouri | | 789 | 847 | FTI | 229 | DSR | 199 | 502 |
| Missouri | | 616 | 800 | FTI | 224 | PTI | 176 | 271 |
| Pacific Surfliner | | 1286 | 1670 | PTI | 603 | DCS | 487 | 174 |
| San Joaquins | | 1878 | 1317 | DSR | 1025 | PTI | 385 | 88 |
| Sunset Ltd | | 1276 | 1430 | FTI | 683 | DSR | 256 | 1784 |
| Texas Eagle | | 1497 | 1442 | FTI | 845 | DSR | 369 | 1073 |



Minutes of Delay per 10K Train Miles by Host for April 2024

| Host | Service | Total Host Responsible Delays | | Largest Two Delay Categories - Current Month | | | | Route Miles |
|---------------|-----------------------------------|-------------------------------|-----------------------|--|------|-----|------|-------------|
| | | Current Month | Most Recent 12 Months | #1 | | #2 | | |
| Target | | 900 | 900 | | | | | |
| Amtrak | Adirondack | 518 | 487 | PTI | 198 | RTE | 82 | 100 |
| | Blue Water | 273 | 459 | PTI | 87 | DCS | 73 | 99 |
| | Ethan Allen Express | 474 | 303 | PTI | 199 | RTE | 116 | 100 |
| | Maple Leaf | 305 | 352 | DCS | 113 | PTI | 69 | 109 |
| | New York - Albany | 475 | 285 | DCS | 118 | PTI | 76 | 81 |
| | New York - Niagara Falls | 705 | 440 | DBB | 172 | DCS | 164 | 109 |
| | Wolverine | 414 | 671 | PTI | 179 | DCS | 114 | 99 |
| BBrRR | Cardinal | 1116 | 1414 | PTI | 557 | FTI | 324 | 132 |
| CN-Canada | Adirondack | 6778 | 7086 | DSR | 5035 | RTE | 889 | 49 |
| Fla DOT | Silver Meteor | 1407 | 998 | CTI | 763 | DSR | 303 | 68 |
| | Silver Star | 813 | 1031 | CTI | 513 | DSR | 172 | 68 |
| FR | Auto Train | 5786 | 4729 | DSR | 2930 | DCS | 2327 | 16 |
| | Silver Meteor | 3763 | 3418 | CTI | 1177 | DSR | 990 | 61 |
| | Silver Star | 2189 | 2447 | DSR | 808 | DCS | 519 | 61 |
| MADOT | Springfield Shuttles | 805 | 903 | DSR | 390 | FTI | 297 | 36 |
| | Vermonter | 889 | 1440 | DSR | 618 | FTI | 141 | 50 |
| MBTA | Downeaster | 1477 | 1136 | DCS | 427 | CTI | 394 | 38 |
| Metra | Empire Builder | 2923 | 2405 | CTI | 2056 | DSR | 441 | 29 |
| | Hiawatha | 2340 | 2372 | DSR | 1044 | CTI | 809 | 29 |
| MIDOT | Blue Water | 376 | 580 | DCS | 133 | PTI | 86 | 22 |
| | Wolverine | 530 | 635 | PTI | 393 | RTE | 60 | 134 |
| MNRR | Acela | 1717 | 1750 | DSR | 1073 | CTI | 426 | 56 |
| | Adirondack | 1125 | 1597 | CTI | 806 | RTE | 107 | 64 |
| | Ethan Allen Express | 939 | 1187 | CTI | 581 | RTE | 152 | 64 |
| | Lake Shore Ltd | 1096 | 1203 | CTI | 604 | DSR | 170 | 64 |
| | Maple Leaf | 549 | 1072 | CTI | 277 | RTE | 186 | 64 |
| | New York - Albany | 937 | 1289 | CTI | 566 | DSR | 136 | 64 |
| | New York - Niagara Falls | 1221 | 1799 | CTI | 728 | RTE | 197 | 64 |
| | Richmond / Newport News / Norfolk | 1820 | 2002 | DSR | 871 | CTI | 672 | 56 |
| Vermonter | 2939 | 2928 | DSR | 1816 | CTI | 775 | 56 | |
| NECR | Vermonter | 1141 | 1870 | DSR | 1067 | DCS | 57 | 192 |
| NMDOT | Southwest Chief | 3827 | 2832 | CTI | 1911 | DCS | 1331 | 80 |
| SCRRA | Coast Starlight | 2113 | 1646 | CTI | 1170 | PTI | 782 | 48 |
| | Pacific Surfliner | 839 | 1063 | PTI | 318 | CTI | 275 | 95 |
| SDNRR | Pacific Surfliner | 931 | 970 | CTI | 408 | PTI | 274 | 60 |
| Sunder | Cascades | 1072 | 840 | PTI | 554 | DCS | 243 | 20 |
| | Coast Starlight | 2200 | 1888 | PTI | 1425 | CTI | 433 | 20 |
| TRE | Texas Eagle | 665 | 821 | RTE | 247 | CTI | 165 | 33 |
| VTR | Ethan Allen Express | 127 | 319 | DSR | 115 | DCS | 8 | 24 |

The numbers included in this document are preliminary and are for informational purposes only.

Excludes hosts with fewer than 15 route miles.

Delays on the Amtrak-owned portion of the Northeast Corridor are shown in a separate report, with tighter delay standards.

Northeast Regional: Roanoke includes all trains between Roanoke and points on the NEC; Richmond / Newport News / Norfolk includes all trains between these locations and points on the NEC.

Minutes of Delay per 10K Train Miles by Service for April 2024

| Service | | Host | Total Host Responsible Delays | | Largest Two Delay Categories - Current Month | | | | Route Miles |
|--------------------------------------|-----------------------------------|-----------|-------------------------------|-------------|--|------|-----|-----|-------------|
| | | | Current | Most | #1 | #2 | | | |
| Target | | | 900 | 900 | | | | | |
| Acela | | | | | | | | | |
| Acela | | MNRR | 1717 | 1750 | DSR | 1073 | CTI | 426 | 56 |
| All Other NEC Corridor Routes | | | | | | | | | |
| Northeast Regional | Richmond / Newport News / Norfolk | CSX | 1501 | 1364 | FTI | 392 | PTI | 273 | 189 |
| | | NS | 1176 | 1020 | FTI | 576 | DCS | 230 | 81 |
| | | MNRR | 1820 | 2002 | DSR | 871 | CTI | 672 | 56 |
| | Roanoke | NS | 891 | 740 | FTI | 348 | PTI | 234 | 216 |
| | Springfield Shuttles | MADOT | 805 | 903 | DSR | 390 | FTI | 297 | 36 |
| Non-NEC Corridor Routes | | | | | | | | | |
| Capitol Corridor | | UP | 565 | 607 | PTI | 232 | DCS | 144 | 171 |
| Carolinian | | CSX | 1664 | 1572 | PTI | 461 | FTI | 408 | 295 |
| | | NS | 783 | 797 | DCS | 271 | PTI | 269 | 202 |
| Cascades | | BNSF | 1557 | 1303 | FTI | 514 | DSR | 308 | 317 |
| | | UP | 1913 | 1450 | PTI | 639 | DSR | 611 | 125 |
| | | Sounder | 1072 | 840 | PTI | 554 | DCS | 243 | 20 |
| Downeaster | | CSX | 480 | 630 | PTI | 289 | DCS | 114 | 107 |
| | | MBTA | 1477 | 1136 | DCS | 427 | CTI | 394 | 38 |
| Empire | Adirondack | CPKC | 1031 | 832 | PTI | 521 | DSR | 253 | 178 |
| | | Amtrak | 518 | 487 | PTI | 198 | RTE | 82 | 100 |
| | | CN-Canada | 6778 | 7086 | DSR | 5035 | RTE | 889 | 49 |
| | | MNRR | 1125 | 1597 | CTI | 806 | RTE | 107 | 64 |
| | Ethan Allen Express | CPKC | 2328 | 1929 | PTI | 1441 | DSR | 530 | 60 |
| | | Amtrak | 474 | 303 | PTI | 199 | RTE | 116 | 100 |
| | | MNRR | 939 | 1187 | CTI | 581 | RTE | 152 | 64 |
| | | VTR | 127 | 319 | DSR | 115 | DCS | 8 | 24 |
| | Maple Leaf | CSX | 1111 | 761 | FTI | 761 | DSR | 100 | 298 |
| | | Amtrak | 305 | 352 | DCS | 113 | PTI | 69 | 109 |
| | | MNRR | 549 | 1072 | CTI | 277 | RTE | 186 | 64 |
| | New York - Albany | Amtrak | 475 | 285 | DCS | 118 | PTI | 76 | 81 |
| | | MNRR | 937 | 1289 | CTI | 566 | DSR | 136 | 64 |
| | New York - Niagara Falls | CSX | 662 | 621 | FTI | 403 | DSR | 84 | 296 |
| | | Amtrak | 705 | 440 | DBB | 172 | DCS | 164 | 109 |
| | | MNRR | 1221 | 1799 | CTI | 728 | RTE | 197 | 64 |
| Heartland Flyer | | BNSF | 1047 | 1432 | DSR | 742 | FTI | 284 | 236 |
| Hiawatha | | CPKC | 333 | 285 | DSR | 179 | DCS | 62 | 53 |
| | | Metra | 2340 | 2372 | DSR | 1044 | CTI | 809 | 29 |
| Illinois | Carl Sandburg / Illinois Zephyr | BNSF | 749 | 789 | DSR | 290 | FTI | 260 | 257 |
| | Illini / Saluki | CN-IC | 693 | 753 | DSR | 285 | FTI | 186 | 304 |
| | Lincoln Service | CN-IC | 1115 | 1712 | FTI | 850 | DSR | 109 | 35 |
| | | UP | 1042 | 908 | PTI | 351 | FTI | 309 | 231 |
| Lincoln / Missouri | | CN-IC | 2046 | 2333 | FTI | 1652 | DCS | 141 | 35 |
| | | UP | 789 | 847 | FTI | 229 | DSR | 199 | 502 |
| Michigan | Blue Water | CN-IC | 389 | 640 | FTI | 317 | DCS | 34 | 159 |
| | | NS | 1746 | 2240 | FTI | 1055 | DCS | 244 | 39 |
| | | Amtrak | 273 | 459 | PTI | 87 | DCS | 73 | 99 |
| | | MIDOT | 376 | 580 | DCS | 133 | PTI | 86 | 22 |
| | Pere Marquette | CSX | 113 | 195 | DCS | 71 | DMW | 16 | 135 |
| | | NS | 1384 | 1712 | FTI | 835 | DMW | 150 | 39 |
| | Wolverine | CN-IC | 1716 | 1417 | DSR | 789 | DCS | 370 | 27 |
| | | NS | 1832 | 2069 | FTI | 865 | DCS | 497 | 39 |
| | | Amtrak | 414 | 671 | PTI | 179 | DCS | 114 | 99 |
| | | MIDOT | 530 | 635 | PTI | 393 | RTE | 60 | 134 |
| Missouri | | UP | 616 | 800 | FTI | 224 | PTI | 176 | 271 |
| Pacific Surfliner | | BNSF | 1162 | 1154 | DCS | 431 | FTI | 198 | 22 |
| | | UP | 1286 | 1670 | PTI | 603 | DCS | 487 | 174 |
| | | SCRRA | 839 | 1063 | PTI | 318 | CTI | 275 | 95 |
| | | SDNRR | 931 | 970 | CTI | 408 | PTI | 274 | 60 |
| Pennsylvanian | | NS | 888 | 828 | FTI | 248 | DCS | 214 | 249 |
| Piedmont | | NS | 812 | 860 | PTI | 299 | FTI | 205 | 173 |
| San Joaquins | | BNSF | 1183 | 1240 | PTI | 472 | FTI | 417 | 284 |
| | | UP | 1878 | 1317 | DSR | 1025 | PTI | 385 | 88 |
| Vermont | | MADOT | 889 | 1440 | DSR | 618 | FTI | 141 | 50 |
| | | MNRR | 2939 | 2928 | DSR | 1816 | CTI | 775 | 56 |
| | | NECR | 1141 | 1870 | DSR | 1067 | DCS | 57 | 192 |

Minutes of Delay per 10K Train Miles by Service for April 2024

| Service | Host | Total Host Responsible Delays | | Largest Two Delay Categories - Current Month | | | | Route Miles |
|-----------------------------|---------|-------------------------------|------------|--|------|-----|------|-------------|
| | | Current | Most | #1 | | #2 | | |
| Target | | 900 | 900 | | | | | |
| Long-Distance Routes | | | | | | | | |
| Auto Train | CSX | 1663 | 1236 | FTI | 628 | DSR | 570 | 898 |
| | FR | 5786 | 4729 | DSR | 2930 | DCS | 2327 | 16 |
| California Zephyr | BNSF | 804 | 852 | DSR | 352 | FTI | 213 | 1027 |
| | UP | 1067 | 1269 | FTI | 413 | DSR | 267 | 1381 |
| Capitol Ltd | CSX | 712 | 717 | DSR | 196 | RTE | 196 | 307 |
| | NS | 1108 | 1194 | FTI | 526 | RTE | 229 | 481 |
| Cardinal | CSX | 798 | 771 | FTI | 349 | DCS | 146 | 703 |
| | NS | 2517 | 1408 | DCS | 752 | PTI | 573 | 79 |
| | BBrRR | 1116 | 1414 | PTI | 557 | FTI | 324 | 132 |
| City Of New Orleans | CN-IC | 875 | 808 | FTI | 313 | DSR | 241 | 930 |
| Coast Starlight | BNSF | 1609 | 1063 | FTI | 476 | RTE | 360 | 158 |
| | UP | 1538 | 1410 | FTI | 499 | DSR | 362 | 1162 |
| | SCRRA | 2113 | 1646 | CTI | 1170 | PTI | 782 | 48 |
| | Sounder | 2200 | 1888 | PTI | 1425 | CTI | 433 | 20 |
| Crescent | NS | 1453 | 1377 | FTI | 757 | DCS | 235 | 1141 |
| Empire Builder | BNSF | 869 | 865 | FTI | 475 | DSR | 232 | 2147 |
| | CPKC | 575 | 681 | FTI | 238 | DSR | 189 | 384 |
| | Metra | 2923 | 2405 | CTI | 2056 | DSR | 441 | 29 |
| Lake Shore Ltd | CSX | 773 | 743 | FTI | 358 | RTE | 149 | 741 |
| | NS | 1126 | 1219 | FTI | 635 | PTI | 191 | 339 |
| | MNRR | 1096 | 1203 | CTI | 604 | DSR | 170 | 64 |
| Palmetto | CSX | 1369 | 1040 | FTI | 520 | PTI | 317 | 659 |
| Silver Meteor | CSX | 1272 | 886 | FTI | 453 | DSR | 305 | 1152 |
| | Fla DOT | 1407 | 998 | CTI | 763 | DSR | 303 | 68 |
| | FR | 3763 | 3418 | CTI | 1177 | DSR | 990 | 61 |
| Silver Star | CSX | 1070 | 968 | DSR | 310 | PTI | 263 | 1209 |
| | NS | 400 | 530 | FTI | 141 | DCS | 118 | 28 |
| | Fla DOT | 813 | 1031 | CTI | 513 | DSR | 172 | 68 |
| | FR | 2189 | 2447 | DSR | 808 | DCS | 519 | 61 |
| Southwest Chief | BNSF | 673 | 790 | DSR | 263 | FTI | 204 | 2206 |
| | NMDOT | 3827 | 2832 | CTI | 1911 | DCS | 1331 | 80 |
| Sunset Ltd | BNSF | 1011 | 1227 | FTI | 311 | DSR | 309 | 190 |
| | UP | 1276 | 1430 | FTI | 683 | DSR | 256 | 1784 |
| Texas Eagle | BNSF | 2511 | 1416 | DSR | 1694 | FTI | 489 | 116 |
| | CN-IC | 1397 | 1799 | FTI | 1262 | DCS | 126 | 35 |
| | UP | 1497 | 1442 | FTI | 845 | DSR | 369 | 1073 |
| | TRE | 665 | 821 | RTE | 247 | CTI | 165 | 33 |

The numbers included in this document are preliminary and are for informational purposes only.

Excludes hosts with fewer than 15 route miles.

Delays on the Amtrak-owned portion of the Northeast Corridor are shown in a separate report, with tighter delay standards.

Northeast Regional: Roanoke includes all trains between Roanoke and points on the NEC; Richmond / Newport News /

Norfolk includes all trains between these locations and points on the NEC.



Host Railroad Report - All-Stations and Customer OTP for April 2024

| Service | All-Stations OTP | | Customer OTP | | Avg Mins Late per Late Rider** | |
|-----------------------------------|------------------|-----------------------|---------------|-----------------------|--------------------------------|-----------------------|
| | Current Month | Most Recent 12 Months | Current Month | Most Recent 12 Months | Current Month | Most Recent 12 Months |
| Amtrak System | 77.6% | 76.1% | 76.5% | 75.8% | 55 | 54 |
| NEC Corridor Routes | 84.0% | 83.7% | 80.8% | 80.2% | 44 | 43 |
| Minimum Standard | | | 80.0% | 80.0% | | |
| Acela* | 84.1% | 83.6% | 79.6% | 80.6% | 34 | 34 |
| Keystone | 94.1% | 94.4% | 93.4% | 93.2% | 40 | 37 |
| Northeast Regional | 80.7% | 80.0% | 78.8% | 77.2% | 47 | 46 |
| On Spine Northeast Regional | 85.7% | 85.2% | 85.3% | 82.9% | 53 | 43 |
| Richmond / Newport News / Norfolk | 71.9% | 72.8% | 68.5% | 70.1% | 44 | 45 |
| Roanoke | 80.8% | 75.6% | 77.5% | 72.4% | 44 | 56 |
| Springfield Shuttles | 87.4% | 87.0% | 86.2% | 86.6% | 36 | 37 |
| Non-NEC Corridor Routes | 82.3% | 79.6% | 78.2% | 76.2% | 45 | 45 |
| Minimum Standard | | | 80.0% | 80.0% | | |
| Capitol Corridor | 92.5% | 91.0% | 89.3% | 87.3% | 32 | 37 |
| Carolinian | 51.4% | 59.0% | 49.2% | 57.6% | 62 | 56 |
| Cascades | 66.4% | 67.8% | 53.1% | 62.6% | 39 | 45 |
| Downeaster | 90.9% | 89.2% | 84.4% | 81.2% | 34 | 38 |
| Empire | 84.2% | 77.6% | 82.8% | 78.0% | 42 | 42 |
| Adirondack | 81.4% | 65.7% | 75.8% | 69.9% | 36 | 40 |
| Berkshire Flyer | - | 51.5% | - | 52.9% | - | 62 |
| Ethan Allen Express | 79.0% | 74.9% | 72.6% | 71.6% | 36 | 42 |
| Maple Leaf | 77.1% | 72.6% | 76.6% | 71.7% | 27 | 47 |
| New York - Albany | 91.0% | 87.1% | 88.8% | 85.2% | 54 | 38 |
| New York - Niagara Falls | 83.0% | 77.6% | 80.6% | 73.9% | 42 | 43 |
| Heartland Flyer | 84.3% | 75.7% | 84.2% | 75.5% | 47 | 42 |
| Hiawatha | 92.4% | 89.5% | 85.8% | 85.4% | 26 | 32 |
| Illinois | 85.6% | 80.9% | 82.8% | 79.9% | 43 | 51 |
| Carl Sandburg / Illinois Zephyr | 92.1% | 82.2% | 92.7% | 81.9% | 38 | 45 |
| Illini / Saluki | 87.5% | 82.7% | 87.1% | 83.7% | 52 | 63 |
| Lincoln Service | 79.3% | 78.5% | 76.4% | 76.6% | 40 | 47 |
| Lincoln / Missouri | 68.9% | 66.9% | 66.9% | 66.4% | 48 | 52 |
| Michigan | 82.8% | 76.2% | 82.2% | 71.5% | 43 | 46 |
| Blue Water | 84.4% | 77.3% | 84.6% | 68.0% | 31 | 43 |
| Pere Marquette | 88.3% | 90.2% | 84.0% | 86.9% | 26 | 38 |
| Wolverine | 81.6% | 73.9% | 81.0% | 69.8% | 50 | 48 |
| Missouri | 76.7% | 80.1% | 83.8% | 81.3% | 31 | 55 |
| Pacific Surfliner | 88.1% | 81.5% | 85.9% | 81.8% | 50 | 45 |
| Pennsylvanian | 60.3% | 75.8% | 63.3% | 74.9% | 49 | 41 |
| Piedmont | 85.9% | 80.0% | 81.8% | 70.4% | 49 | 43 |
| San Joaquins | 71.6% | 73.9% | 68.4% | 69.3% | 50 | 44 |
| Vermonteer | 66.9% | 63.6% | 71.7% | 69.1% | 45 | 49 |
| Long-Distance Routes | 53.6% | 54.0% | 54.1% | 57.5% | 89 | 88 |
| Minimum Standard | | | 80.0% | 80.0% | | |
| Auto Train | 43.1% | 77.7% | 14.4% | 62.0% | 99 | 78 |
| California Zephyr | 46.4% | 35.8% | 51.0% | 38.1% | 130 | 127 |
| Capitol Ltd | 66.6% | 66.7% | 73.0% | 71.3% | 101 | 64 |
| Cardinal | 66.3% | 58.3% | 64.5% | 59.0% | 64 | 71 |
| City Of New Orleans | 73.0% | 66.9% | 83.8% | 77.7% | 149 | 86 |
| Coast Starlight | 51.0% | 54.7% | 51.5% | 58.5% | 96 | 79 |
| Crescent | 52.4% | 55.4% | 57.6% | 59.6% | 65 | 75 |
| Empire Builder | 62.4% | 54.0% | 65.3% | 57.0% | 72 | 111 |
| Lake Shore Ltd | 74.6% | 69.0% | 71.6% | 68.6% | 60 | 68 |
| Palmetto | 67.0% | 66.7% | 67.4% | 68.4% | 56 | 53 |
| Silver Meteor | 37.0% | 55.2% | 31.7% | 52.4% | 87 | 73 |
| Silver Star | 40.8% | 49.9% | 36.3% | 48.4% | 64 | 72 |
| Southwest Chief | 34.9% | 34.8% | 36.3% | 32.9% | 105 | 116 |
| Sunset Ltd | 46.2% | 43.9% | 56.5% | 51.1% | 131 | 106 |
| Texas Eagle | 54.1% | 58.8% | 62.2% | 63.4% | 112 | 89 |

The numbers included in this document are preliminary and are for informational purposes only.

Northeast Regional: Roanoke includes all trains between Roanoke and points on the NEC; Richmond/Newport News/Norfolk includes all trains between these locations and points on the NEC.

* Acela on-time performance target is 90.0%

** Excludes on-time Customers



Host Railroad Responsible Delays

| Code | Code Description | Explanation |
|------|------------------------------|--|
| CTI | Commuter Train Interference | Delays for meeting or following commuter trains |
| DCS | Signal Delays | Signal failure or All Other signal delays, wayside defect-detector false-alarms, defective road crossing protection, efficiency tests, drawbridge stuck open |
| DMW | Maintenance of Way | Maintenance of Way delays including holds for track repairs or MW foreman to clear |
| DSR | Slow Order Delays | Temporary slow orders, except heat or cold orders |
| DTR | Detour | Delays from detours |
| FTI | Freight Train Interference | Delays from freight trains |
| PTI | Passenger Train Interference | Delays for meeting or following All Other passenger trains |
| RTE | Routing | Routing-dispatching delays including diversions, late track bulletins, etc. |

Amtrak Responsible Delays

| Code | Code Description | Explanation |
|------|------------------------|--|
| ADA | Passenger Related | All delays related to disabled passengers, wheel chair lifts, guide dogs, etc. |
| CAR | Car Failure | Mechanical failure on all types of cars |
| CCR | Cab Car Failure | Mechanical failure on Cab Cars |
| CON | Hold for Connection | Holding for connections from All Other trains or buses. |
| ENG | Locomotive Failure | Mechanical failure on engines. |
| HLD | Passenger Related | All delays related to passengers, checked-baggage, large groups, etc. |
| INJ | Injury Delay | Delay due to injured passengers or employees. |
| ITI | Initial Terminal Delay | Delay at initial terminal due to late arriving inbound trains causing late release of equipment. |
| OTH | Miscellaneous Delays | Lost-on-run, heavy trains, unable to make normal speed, etc. |
| SVS | Servicing | All switching and servicing delays |
| SYS | Crew & System | Delays related to crews including lateness, lone-engineer delays |

Third-Party Delays

| Code | Code Description | Explanation |
|------|----------------------|---|
| CUI | Customs | U.S. and Canadian customs delays; Immigration-related delays |
| DBS | Debris | Debris strikes |
| MBO | Drawbridge Openings | Movable bridge openings for marine traffic where no bridge failure is involved |
| NOD | Unused Recovery Time | Wait for departure time |
| POL | Police-Related | Police/fire department holds on right-of-way or on-board trains |
| TRS | Trespassers | Trespasser incidents including road crossing accidents, trespasser / animal strikes, vehicle stuck on track ahead, bridge strikes |
| WTR | Weather-Related | All weather-related delays including floods/washouts, earthquake-related delays, heat or cold orders, slippery rail due to leaves |

*These delay codes are applicable to Off-NEC routes only.