

As of
December 2024

SUSQUEHANNA RIVER RAIL BRIDGE PROJECT



Project Update



The Amtrak Susquehanna River Bridge Project is a critical infrastructure project that will improve rail connectivity along the Northeast Corridor (NEC) by replacing the existing two-track bridge over the Susquehanna River between the City of Havre de Grace in Harford County, Maryland, and the Town of Perryville in Cecil County, Maryland. The new structures will include two new, fixed parallel bridges with greater vertical and horizontal clearances for marine traffic. Amtrak is beginning preparatory work for the project. This project update describes recent progress and upcoming activities residents and business owners may see in the coming months. The activity descriptions and general locations below are dynamic and subject to change.

Recent Progress

- The removal of the remnant piers adjacent to the existing Susquehanna River Bridge was completed on time in late October 2024.
- Equipment was demobilized from the river in early November 2024.
- Ecologists completed forest surveys to gather data on bat species.
- Archaeologists completed investigations involving backhoe trenching and hand excavation in various locations throughout the project site.



Remnant pier removal

Environmental Surveys

- Crews will continue to conduct various surveys to gather information about natural and archaeological resources and ambient noise and vibration in the first quarter of 2025.
- Surveys will be conducted during daytime weekday hours.
- Work will involve excavation, measurements, photographs, drones, etc.



*Pre-construction
environmental surveys*

SUSQUEHANNA RIVER RAIL BRIDGE PROJECT



Environmental and Geotechnical Testing

- Crews will be in various locations throughout the project site during the first and second quarters of 2025 performing environmental and geotechnical borings to provide the design and construction teams with a better understanding of subsurface conditions.
- These activities are expected to occur during daytime and weekday hours.
- Boring rigs, vacuum excavators and hand augers will be used to collect soil and in-river samples.
- Disturbed areas will be restored upon completion.



Geotechnical Borings

Subsurface Utility Investigations

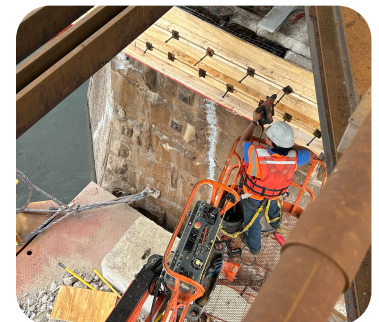
- Crews will identify subsurface utilities throughout the project site using ground penetrating radar, hand augers, and vacuum excavators.
- This activity is anticipated to begin in December 2024 or January 2025 and continue through the first and second quarters of 2025.
- Underwater utility identification is expected to take place on the west side (upstream) of the existing bridge.
- The information will be used to identify utilities that may conflict with upcoming bridge construction so that facilities can be relocated if needed in advance of construction.
- Activities will typically occur during daytime weekday hours.
- There will be roadway impacts at some locations. Crews will coordinate lane closures with the appropriate authorities prior to starting work.
- Disturbed areas will be restored upon completion.



Identification of
subsurface utilities

Ongoing Railroad Maintenance

- In addition to the project-specific activities, Amtrak will continue performing regular inspections and maintenance along the existing bridge and adjacent segments of the Northeast Corridor.



Repairs to the existing bridge

Project Timeline

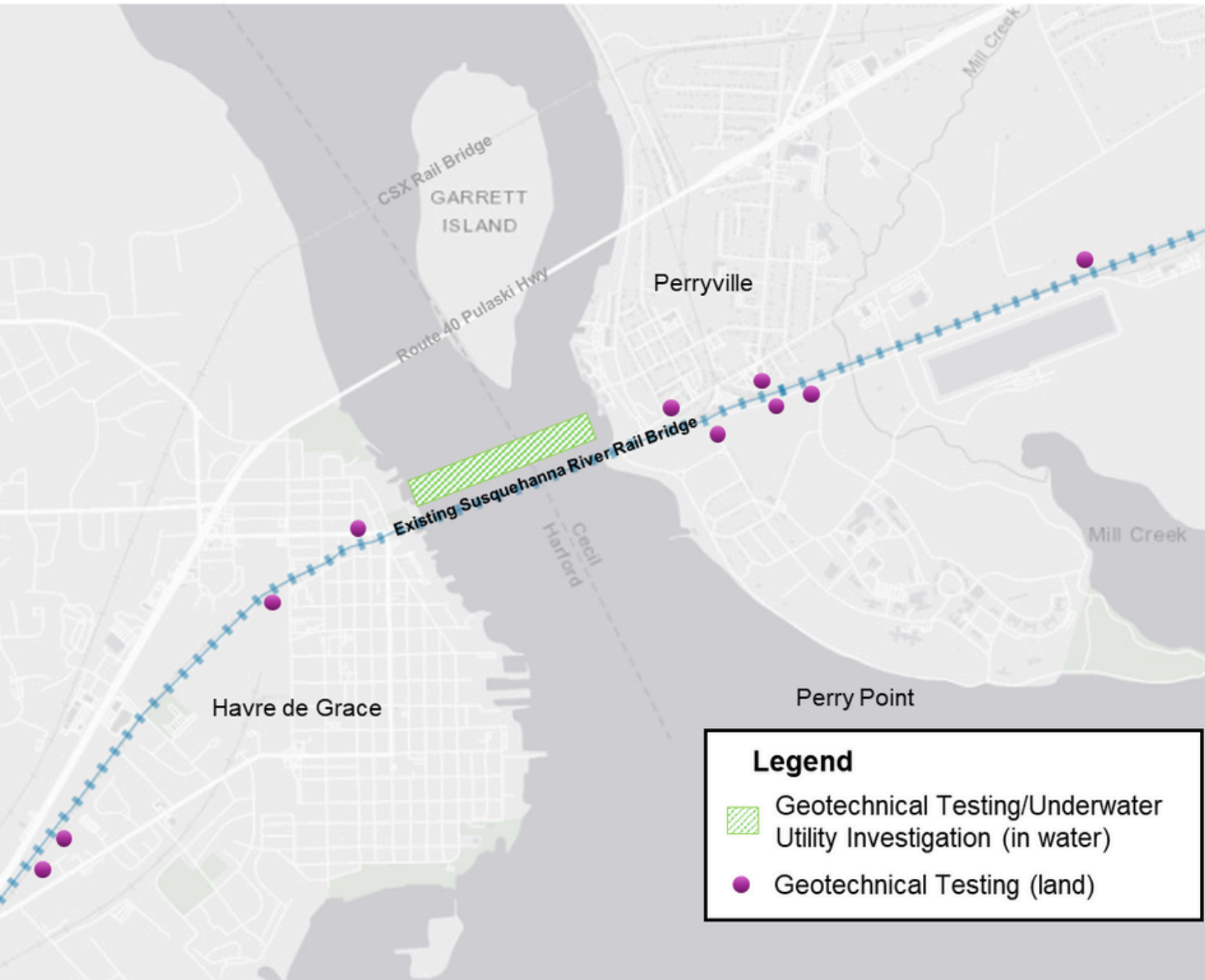


As of
December 2024


SUSQUEHANNA RIVER RAIL BRIDGE PROJECT




Approximate Locations of On-Going and Upcoming Activities




For More Information:

 [Amtrak.com/srb](https://amtrak.com/srb)

 Amtrak – Attn Susquehanna River Rail Bridge Project
Box 65 – 2955 Market Street, Philadelphia, PA 19104

 SRBProject@amtrak.com

 844-SUS-RAIL
844-787-7245

Scan to sign up for
our newsletter

